

**NAAC Accredited**



**Sinhgad Institutes**

**The Annual Magazine**

**2018-19**

Recognized by the Government of Maharashtra

Approved by the Council of Architecture

Affiliated to the Savitribai Phule Pune University, Pune

(ID No. PU/PN/Engg/1512000)

**SINHGAD TECHNICAL EDUCATION SOCIETY'S**  
**SINHGAD COLLEGE OF ARCHITECTURE**  
**PUNE**



**Dr. Sunanda M. Navale**

**Founder Secretary, Sinhgad Institutes**

*“We see a potential leader in every student. We treat every mind with the respect that is deserving of one who is to achieve greatness.”*

The world is fast converting to a knowledge economy where the only wealth is agile and able to adapt to changing scenarios. Now, it is not just enough to complete individual. We at Sinhgad Institutes have always believed in the complete development of an individual. We see a potential leader in every student. We treat every mind with the respect that is deserving of one who is to achieve greatness.

Our emphasis on students getting involved in sports and other extra-curricular activities lay the foundation of an individual who is academically keen and able.

Peter Drucker had once famously said, ‘The best way to predict the future is to create it.’



**Mr. Rohit M. Navale**

**Vice President (HR), Sinhgad Institutes**

*“Our emphasis on honesty, fair play and integrity go a long way in ensuring the success of our alumni when they go out into the world.”*



**Mrs. Rachana Navale Ashtekar**

**Vice President (Admin), Sinhgad Institutes**

*“Our faculty is the engine that helps the institute running with ceaseless efforts and constant innovation.”*

## **FOUNDER PRESIDENT'S MESSAGE**

**Prof. M. N. Navale**

**Founder President, Sinhgad Institutes**



*“We ensure that these young minds find the right knowledge and the right atmosphere to dream and the right preparation to achieve their dreams.”*

Two decades ago, with the winds of change blowing through the Indian economic landscape, we had a dream. We realized that the coming century would throw up unfamiliar challenges, the kind that mankind has not seen yet and the pace of change will be unsettling. Our dream therefore was to build an institution that will equip the youth to be able to compete in a scenario where change could be called the only constant.

From this dream arose Sinhgad Institutes. From a humble start, our family is now 70,000 plus and growing. But there is one way in which we have not changed and that is in our uncompromising stand on quality of education and its applicability in life. We have always worked towards creating thought leaders and frowned upon rote learning. This is evident in the quality of students that come out of our institutes and their successful trajectory in life.

At our campuses, we see young minds reinventing the future in more ways that we can imagine. The pace of change is only accelerating and this means that these young minds will find many ways to influence the future and better the lives of millions atmosphere to dream and the right preparation to achieve their dreams.

***Come join us in our march towards light.***

## OUR VISION

*"create an milieu for crafting sensible & responsible architects for the society"*



## OUR MISION

*committed to offer a conducive academic environment  
to  
LEARN, DEMONSTRATE & PROGRESS  
for  
both students and teachers*

## CONTENTS

- **SCOA**
- **ACADEMIC WORKS**
- **CO & EXTRA-CURRICULAR**
- **EVENTS**
- **PHOTOGRAPHS**

## OUR OBJECTIVES

*to provide all-round development & excellence in  
curricular program, co-curricular activities & extra-  
curricular activities*





**Dr. Banani Banerjee**  
**Principal**

**Student Editor**

1. Rashmin Kale III – B

**Team Members**

1. Omkar Jagtap II-B
2. Madhura Hanchate III-B

**Faculty Coordinator**

- Ar. Mukta Pandit  
Ar. Shreya Shirsath

**FROM PRINCIPAL'S DESK**

We, at SCOA are consciously creating a conducive academic environment, provide all facilities and pay full attention to mould the students to become sensitive, creative, practical, dutiful and ethical architects to serve the society. We proudly announce that SCOA is NAAC accredited and it was possible due to our competent faculty, state-of-the-art infrastructural facilities, holistic approach and over and above strong determination.

We are happy to publish annual magazine Abhivyakti every year where talents and team-efforts of our students and faculty are portrayed, and also assure to continue the tradition which started at the inception of our college.

**FROM EDITOR**

**Rashmin Kale, B. Arch. III Year-B**

The students of SCOA take the pride of continuing the tradition of publishing annual magazine Abhivyakti this year. Entire process from collection of contents, editing, composition and printing gave us the opportunity to work in collaboration, intellectual enhancement and most importantly to add a milestone in the progress of college.

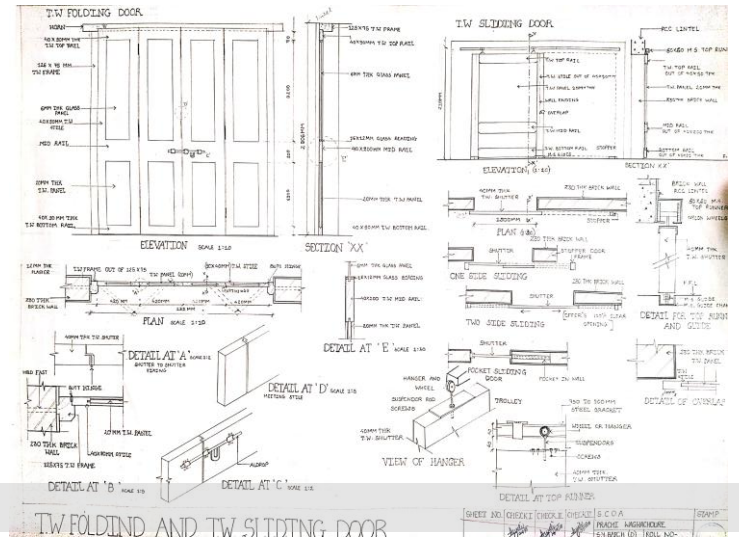
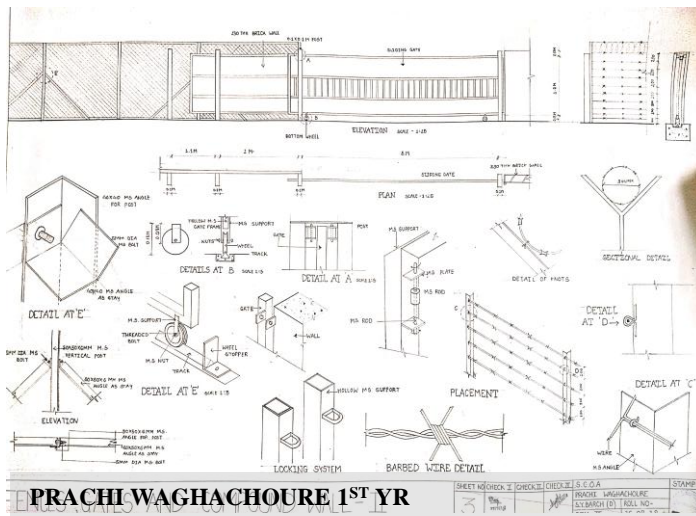
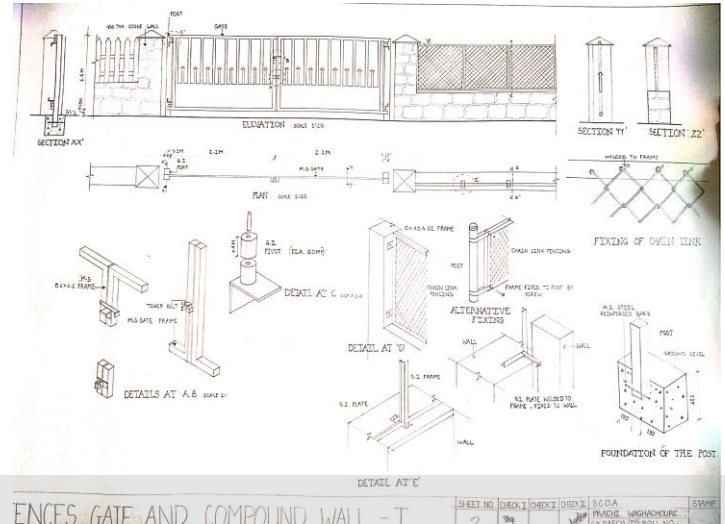
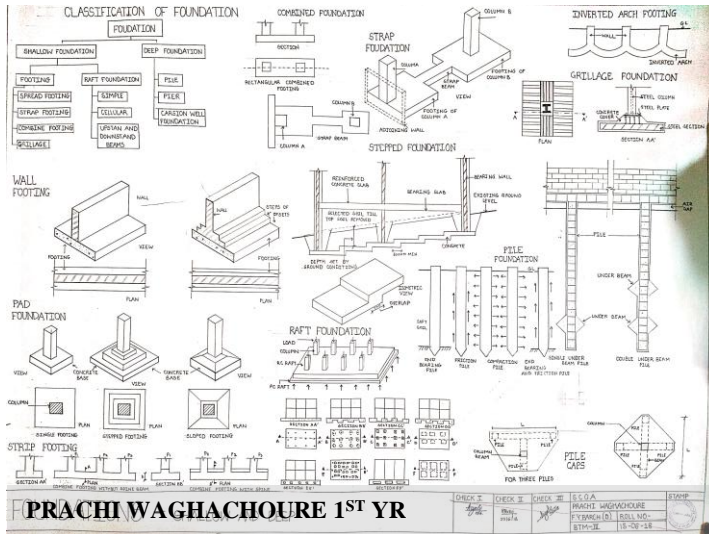
We are grateful to faculty and management for extending their support and guidance.

# ACADEMIC WORKS

## FIRST YEAR B. ARCH DESIGN I

### KINDERGARTEN MODELS





# ACADEMIC WORKS

## FIRST YEAR B. ARCH

### BTM

**ELEVATION (Scale 1:10)**

**PLAN (Scale 1:10)**

**DETAILS:** DETAIL OF SILLING, DETAIL OF BEADING RUNNER, ALTERNATIVE DETAIL FOR TOP RUNNER, TYPES OF GUIDE CHANNEL, TYPES OF GUIDES.

**SCHEDULE OF WINDOW:**

NO.	DESCRIPTION	QTY
1	Window Frame	1
2	Window Sill	1
3	Window Beading	1

**PRACHI WAGHACHOURE 1ST YR**

SHEET NO. CHECKED BY: CHECKED BY: S.C.O.A. PRACHI WAGHACHOURE

**ELEVATION (Scale 1:10)**

**PLAN (Scale 1:10)**

**ISOMETRIC VIEW**

**SCHEDULE OF COLUMN:**

NO.	DESCRIPTION	QTY
1	Column	1
2	Column Footing	1

**SCHEDULE OF FOOTING:**

NO.	DESCRIPTION	QTY
1	Footing	1

**PRACHI WAGHACHOURE 1ST YR**

SHEET NO. CHECKED BY: CHECKED BY: S.C.O.A. PRACHI WAGHACHOURE

**TRANSVERSE SECTION (Scale 1:10)**

**SECTION ACROSS BEAMS (Scale 1:10)**

**SECTION ALONG BEAMS (Scale 1:10)**

**ISOMETRIC VIEW (Scale 1:10)**

**BEAM TABLE:**

BEAM NO.	SIZE	REINFORCEMENT	ANCHOR	ST BRIDGE
1	200x300	4E8 + 1D10	375 + 210	1000x1000

**PRACHI WAGHACHOURE 1ST YR**

SHEET NO. CHECKED BY: CHECKED BY: S.C.O.A. PRACHI WAGHACHOURE

**PLAN (Scale 1:10)**

**PRACHI WAGHACHOURE 1ST YR**

SHEET NO. CHECKED BY: CHECKED BY: S.C.O.A. PRACHI WAGHACHOURE



# ACADEMIC WORKS

## FIRST YEAR B. ARCH DESIGN

### SETTLEMENT STUDY TOUR REPORT

**AIM :** To study the settlement , lifestyle , vernacular architecture , local materials and document historical structures

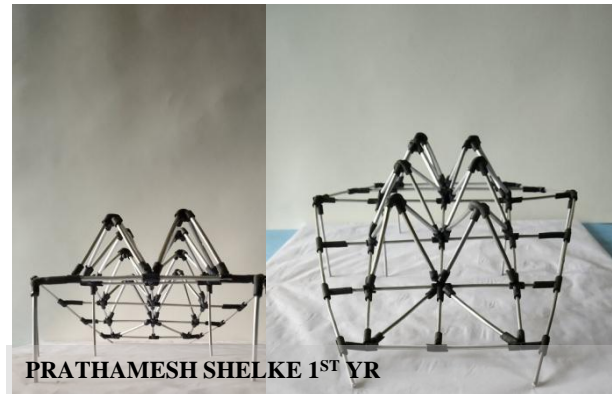
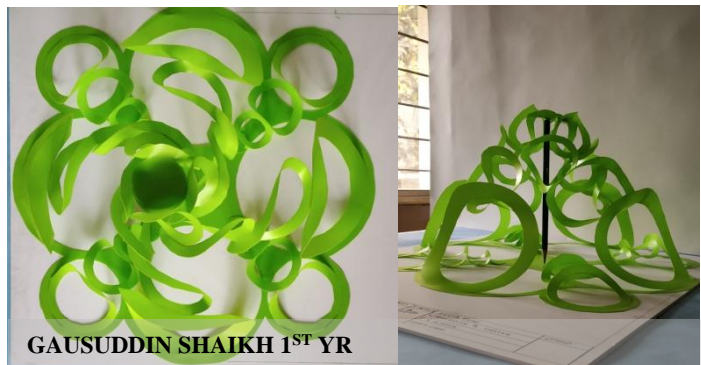
**OUTCOME :** To design community centre at Theur



# ACADEMIC WORKS

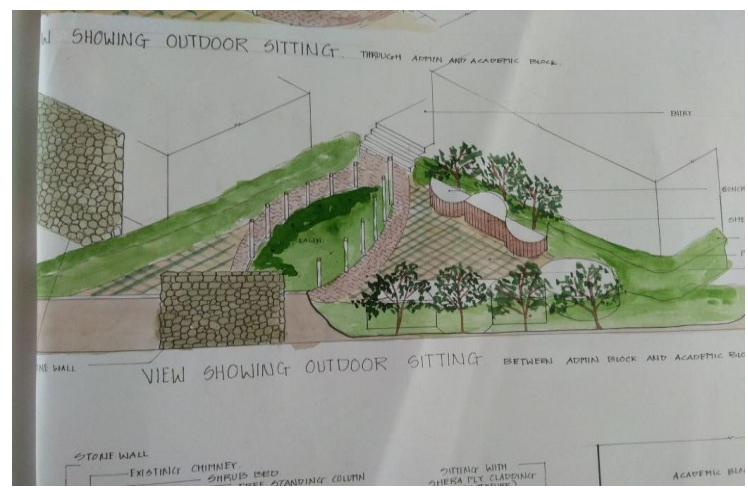
## FIRST YEAR B. ARCH

### WORKSHOP, DESIGN MODELS , TENSILE STRUCTURES

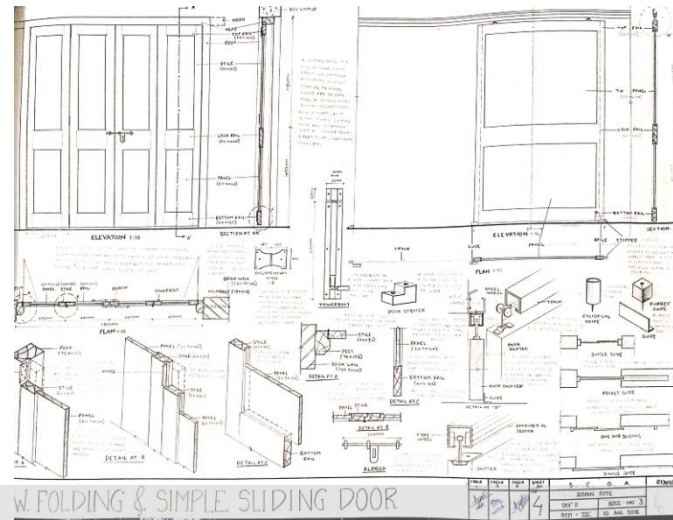
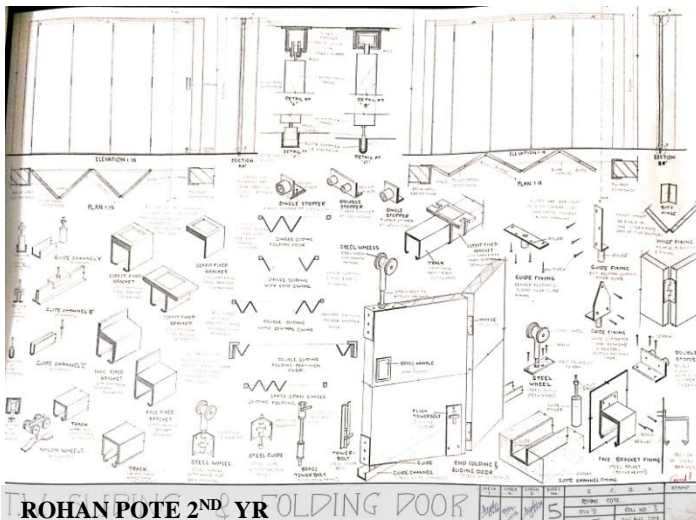
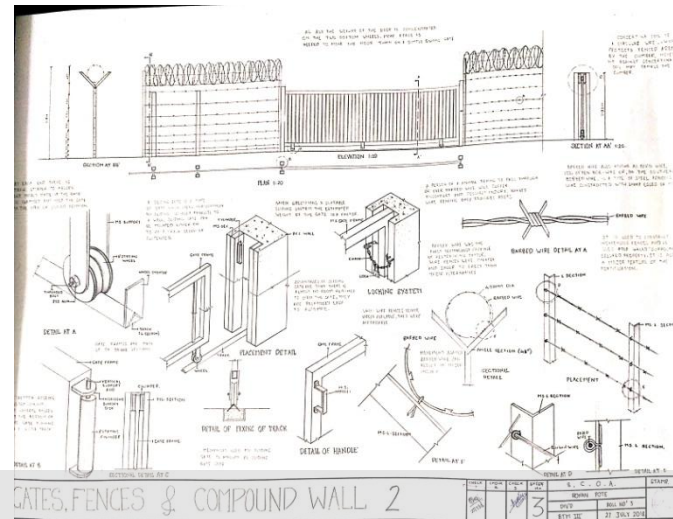
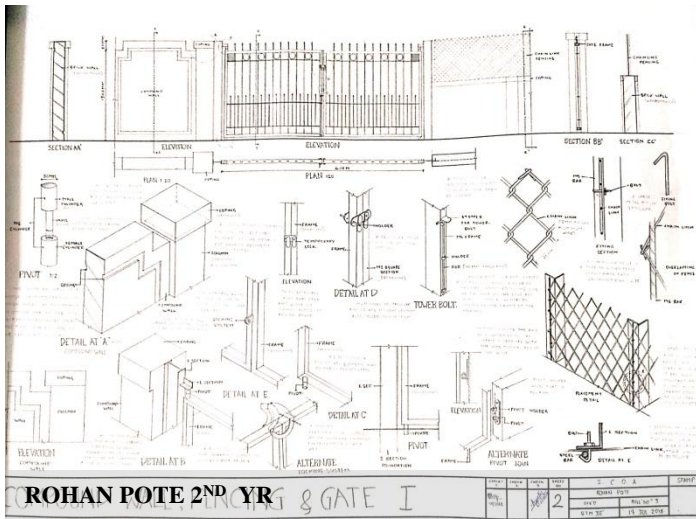


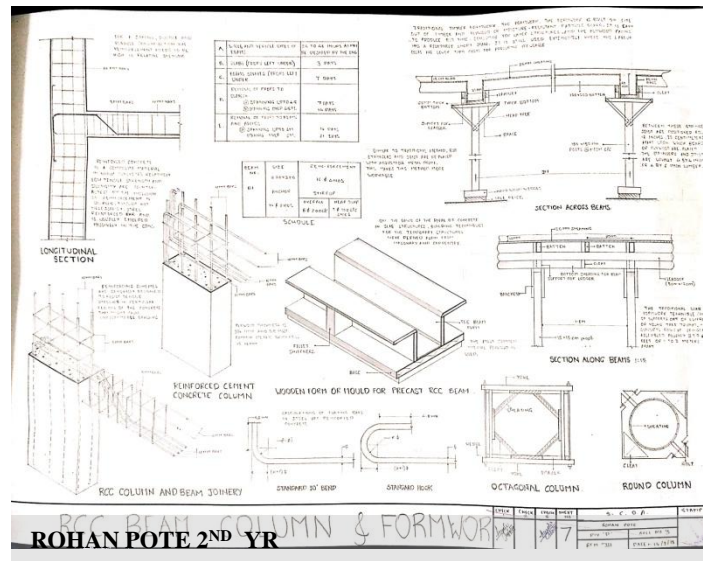
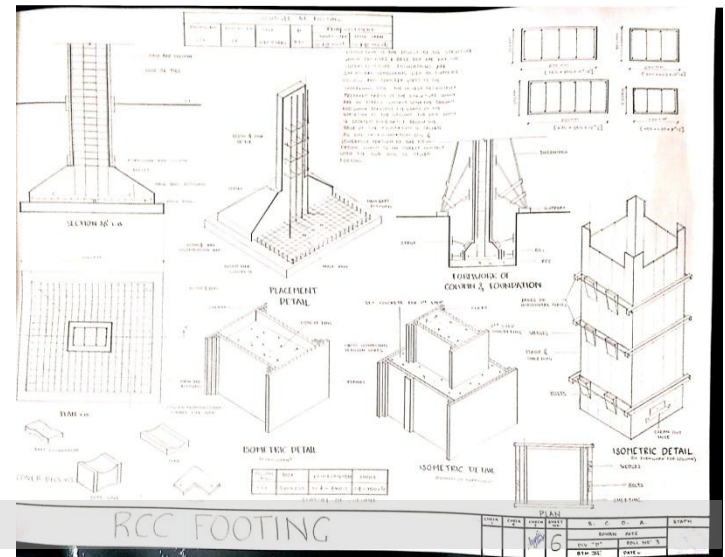
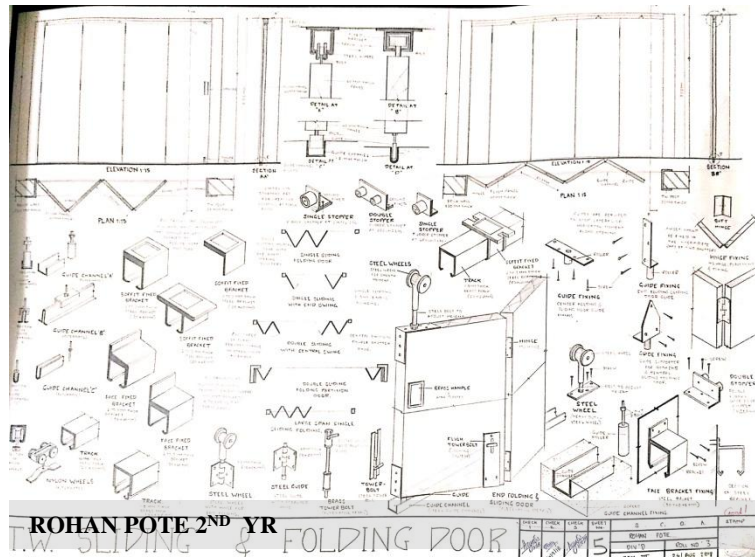
# ACADEMIC WORKS

## SECOND YEAR B. ARCH DESIGN



Abhivyakti 2018-19.  
**ACADEMIC WORKS**  
**SECOND YEAR B. ARCH**  
**BTM**



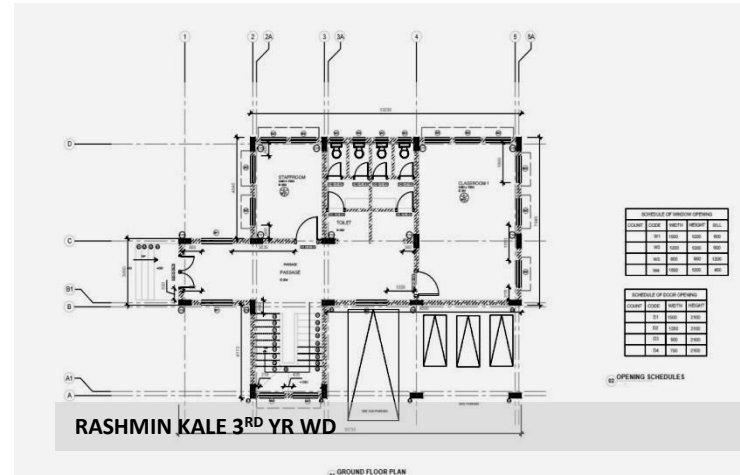


# ACADEMIC WORKS

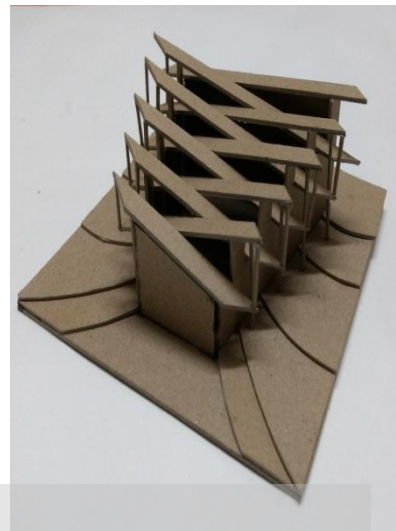
## THIRD YEAR B. ARCH



DARSHAN KHANTER 3<sup>RD</sup> YR



RASHMIN KALE 3<sup>RD</sup> YR WD



COMMERCIAL CENTRE LOCATION : VADGAON, PUNE

INTRODUCTION

A COMMERCIAL CENTRE IN URBAN CONTEXT HAS MANY ACTIVITIES SUCH AS SHOPS, OFFICES, RESTAURANTS, ETC. THIS IS GENERALLY CATEGORIZED AS MULTIBUSE SPACE.

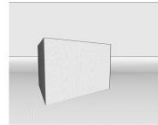
SITE IS LOCATED IN VADGAON, PUNE, WHICH HAS MODERATE CLIMATE WITH ADEQUATE RAINFALL.

IT HAS ACCESS ON NORTHERN SIDE OF 6M WIDE ROAD. IT HAS ADJACENT POLICE STATION ON WESTERN SIDE. IT IS SURROUNDED BY RESIDENTIAL AREA WHICH WILL FACILITATE THE DEVELOPMENT OF A COMMERCIAL CENTRE.

SITE DIMENSIONS : 40 M X 40 M



CONCEPT : INTERLOCKING BLOCKS

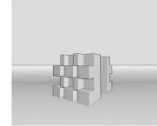
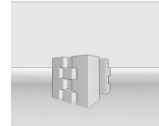
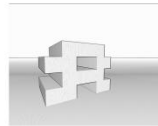


THE INTERLOCKING BLOCKS HELP ACHIEVE AN UNORTHODOX APPROACH TOWARDS A COMMERCIAL COMPLEX. IT BREAKS THE MONOTONOUS ELEVATIONS THAT A COMMERCIAL COMPLEX PRESENTS. THE INTERLOCKING BLOCKS HELP ACHIEVE IN MANAGING THE SERVICE BLOCKS AND FUNCTIONALITY OF BUILDING.

THE CONCEPT ALSO HELPS IN PROVIDING A SUSTAINABLE APPROACH DUE TO MANY VOIDS DUE TO INTERLOCKING.

THE CHALLENGE IN THIS CONCEPT WAS TO MAINTAIN THE CONNECTIVITY BETWEEN BLOCKS. THIS WAS TACKLED BY PROVIDING A CENTRAL STAIRCASE.

THE BUILDING IS ORIENTED ALONG THE NORTH SOUTH DIRECTION TO ACHIEVE THE MAXIMUM DIFFUSED LIGHT.



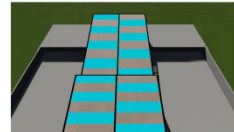
VEGETATION BLOCKS ARE PLACED ALONG THE SERVICE BLOCKS TO IMPROVE THE QUALITY OF AIR FLOW, REDUCES THE HEAT GAIN AND TO HIDE THE PIPING NETWORK.



WOODEN PANELS AND GLASS ARE FIXED ON THE NORTH FACADE TO GET MAXIMUM DIFFUSED LIGHT.



WOODEN LOUVERS ARE PLACED ON EASTERN AND WESTERN FACADE.



THE ROOF INCORPORATES PHOTOVOLTAIC PANELS WHICH ARE CAPABLE TO HANDLE 30% OF BUILDING'S ENERGY CONSUMPTION.

**STRENGTH :**  
FLAT LAND  
NO TREES TO BE CUT  
FRONT SIDE OF THE ROAD

**WEAKNESS :**  
TREES AND VEGETATION TO BE PLANTED.  
ADJACENT ROAD MEETS VERY HEAVY TRAFFIC.

**OPPORTUNITY :**  
DESIGN OF PROPER VENTILATION,  
PLACEMENT OF FLORA ACCORDING TO NEED AND DESIGN.

**THREAT :**  
SMALL PATCH AT THE BACK OF THE SITE REMAIN WHICH CAN BECOME HOME FOR INSECTS AND OTHERS.



EAST AND WEST FACADE HAS MINIMUM SURFACE AREA WHICH REDUCES THE AMOUNT OF HEAT GAIN. EACH OPENINGS ON BOTH FACADES HAVE VEGETATION BLOCKS AS BUFFERS TO IMPROVE AIR QUALITY.



NORTH FACADE ALLOWS NORTHERN LIGHT INTO BUILDING. LARGER WINDOWS ARE PROVIDED FOR LIGHT. WOODEN PANELS CONTROL INFLOW OF LIGHT. FACADE CAN BE COMPLETELY CLOSED AND OPENED.



AJINKYA GODNADIKAR 3<sup>RD</sup> YR

GODNADIKAR AJINKYARAJ  
ROLL NO : 03

01

# ACADEMIC WORKS

## THIRD YEAR B. ARCH

### DESIGN - V

## RELIANCE FOUNDATION SCHOOL, PANCHGANI

### INTRODUCTION:

RELIANCE FOUNDATION SCHOOLS WERE SETUP WITH A VISION TO BUILD AN INCLUSIVE INDIA BY ADDRESSING NATIONS DEVELOPMENT CHALLENGES. THE SCHOOL WILL FEATURE A COMPREHENSIVE DEVELOPMENT APPROACH, WITH A FOCUS ON HOLISTIC DEVELOPMENT OF AN INDIVIDUAL. RELIANCE FOUNDATION SCHOOL IS K-10 ENGLISH MEDIUM CENTRAL BOARD SECONDARY EDUCATION (CBSE) SCHOOL WITH AN ASPIRATION AND A COMMITMENT TO PROVIDE ENJOYABLE AND ENRICHING LEARNING ENVIRONMENT TO STUDENTS.

### SITE ANALYSIS

LOCATION: NEAR BODDWLI, PANCHGANI MAHARASHTRA.  
 ALTITUDE: 1300M  
 CLIMATE: DOLD AND CLOUDY, HEAVY RAINFALL, MODERATE SUMMER.  
 WIND DIRECTION: NORTH - SOUTH.  
 SOIL TYPE: LOOSE RED SOIL AND LARGE BLACK STONES, SITUATED VERY CLOSE TO THE SURFACE.



### SWOT ANALYSIS

#### STRENGTH:

SITE IS NOT OBSTRUCTED FROM ANY SIDE. HENCE VIEW OF ALL SIDE IS AVAILABLE.  
 UNOBSTRUCTED FLOW OF AIR AND LIGHT ON SITE.  
 SITE HAS GOOD GRADIENT FOR RAIN-WATER TO NATURALLY DRAIN BUT THERE ARE NO TREES TO BE CUT.

#### OPPORTUNITY :

CONTOURS HAVE MADE THE SITE CHALLENGING.  
 HARSH GEOGRAPHICAL CAN BE TACKLED CREATIVELY.  
 OPPORTUNITY FOR AN INTERESTING DESIGN SOLUTION ALONG WITH LANDSCAPING.

#### WEAKNESS :

HEAVY RAINFALL DURING MONSOON MAKES SITE SURROUNDING PATCHY.  
 SITE ACCESS IS WEAK AS LOCATED AWAY FROM MAIN AREAS OF CITY.  
 PUBLIC INFRASTRUCTURE LIKE TRANSPORTATION IS WEAK.

#### THREAT :

STEEP SLOPE AT FEW PLACES.  
 RISK OF LANDSLIDES, SOIL EROSION ETC.  
 WATER LOGGING NEEDS TO BE TAKEN CARE OF.

THE AUDITORIUM AND DANCE ROOMS ARE PLACED ON THE FRONT FACADES IN ORDER TO HIGHLIGHT THE SPECIALITY OF THE SCHOOL. THESE ROOMS ARE PLACED ON THE UPPER LEVEL PROJECTING OUT FROM THE FACADE WHICH NOT ONLY INTERESTING ELEVATIONAL FEATURE BUT ALSO PROVIDES A GRANDVIEW OF POINT TO THE ENTRANCE.

### CONCEPT :

SITE IS LOCATED IN PANCHGANI AND HAS STEEP SLOPES .

THE INITIAL IDEA WAS TO RETAIN THESE SLOPES TO MAXIMUM EXTENT. THIS HELPED IN THE BASIC ZONING OF PLAN.

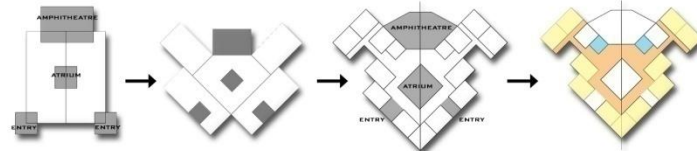
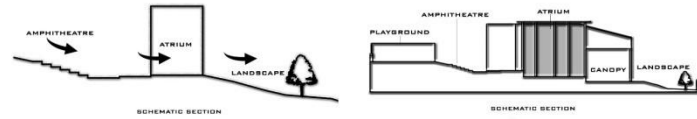
THE IDEA OF AXIAL AND SYMMETRICAL PLANNING IS PUT FORTH KEEPING THIS CONCEPT IN MIND.

I SLOPED THE BUILDING DOWN FROM THE HILL AND ADDED AN AMPHITHEATRE TO MERGE THE HILL AND INTEGRATE THAT WITH THE BUILDING. THIS ALLOWED ME TO INTEGRATE THE ATRIUM AS GREEN ZONE BRING THE HILL INTO THE BUILDING AND TAKE VIEWS OUT FROM THE ATRIUM AND FROM THE ROOMS INTO THE LANDSCAPE.

THE AMPHITHEATRE AND ATRIUM ARE THE FOCAL POINTS OF THE DESIGN. IF THE USER IS STANDING IN ONE OF THESE FOCAL POINT CAN EXPERIENCE THE CONCEPT AND OBSERVE THE WHOLE SLOPE OF THE SITE.

THE PLAN HAS BEEN BRANCHED OUT INTO TWO WINGS IN ORDER TO ACHIEVE TWO DIFFERENT ENTRIES TO THE SCHOOL IN WHICH ONE IS MAIN ENTRY TO THE ESTABLISHMENT WHILE THE OTHER IS PRIVATE STUDENTS ONLY WHICH LEADS TO LANDSCAPE AREA WHICH CATERERS AS A COMMON GATHERING SPACE .

THE GREEN ROOF TECHNOLOGY IS IMPLEMENTED TO CONTINUE THE HILL SLOPES AND ALSO TO ADD, ECO/FRIENDLY APPROACH TO THE BUILDING.



THE SITE IS LOCATED IN HILLSTATION IT WAS NECESSARY TO ACHIEVE MAXIMUM HEAT GAIN IN THE BUILDING. THIS IS ACHIEVED BY KEEPING MAXIMUM SURFACE AREA IN EASTERN-SOUTHERN-WESTERN SIDES.  
 THE TROMBE WALLS ARE IMPLEMENTED ON SIDES RECEIVING MAXIMUM SOLAR RADIATION TO MAINTAIN OVER-ALL MICROCLIMATE OF THE BUILDING. A SUSTAINABLE APPROACH TO THE BUILDING IS ACHIEVED BY USING LOCAL MATERIALS.

AJINKYA GODNADIKAR 3<sup>RD</sup> YR

SINHGAD COLLEGE OF ARCHITECTURE  
 NAME : GHODNADIKAR AJINKYARAJ  
 ROLL NO : 03 DIV : B

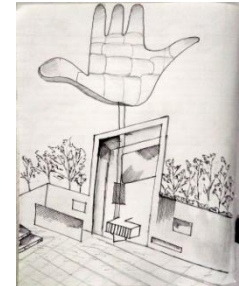
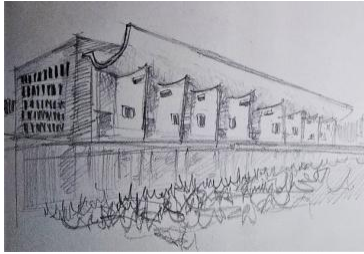




# STUDY TOUR REPORT

## THIRD YEAR B.ARCH DESIGN

### CHANDIGARH



# STUDY TOUR REPORT

## THIRD YEAR B.ARCH

### MONUMENTS



### TOWER OF SHADOW



Designed to study the solar movement, this building serves to le Corbusier to support his thesis that “ it is possible to control the sunlight in the four corner of a building, play with it even in hot country and finally obtain low temp.

the building is aligned on the north- south axis, north side is entirely open while others are with sunbreakers



### THE OPEN HAND

this giant hand in metal sheet rises 26 meters from a sunken French and rotates freely in the wind from a high concrete pedestal, conveying the symbolic message "open to give, open to receive". conspicuous by its scale, the open hand is the official emblem of the city.



AMPHITHEATER,  
OPEN HAND MONUMENT



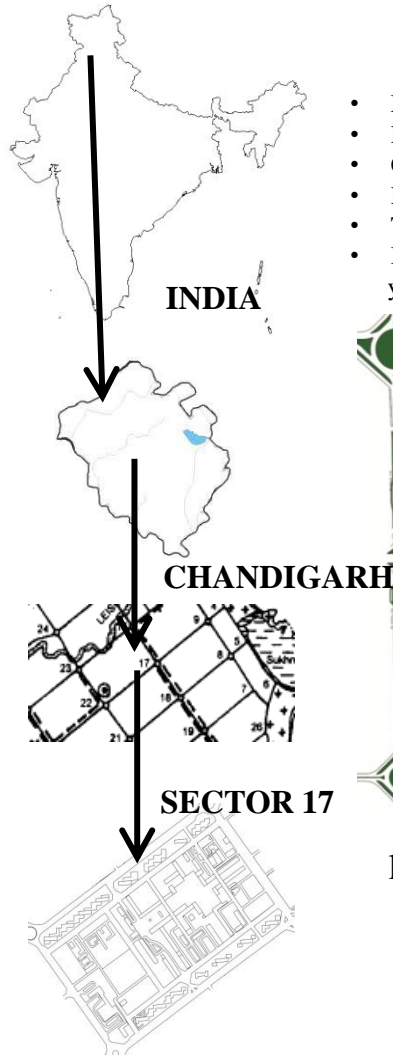
GEOMETRICAL HILL



MARTYR'S MEMORIAL

### CAPITOL COMPLEX- MONUMENTS

**LOCATION**



**ABOUT**

- Main commercial and business hub of the city
- Highest order of commercial activity
- Centre for local governance
- Heart of the city
- The public is free to use the space without any prohibition
- It is also perceived as a hangout space by the young and old alike



**legends**

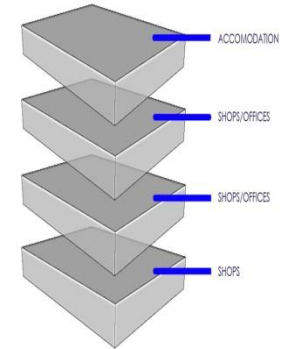
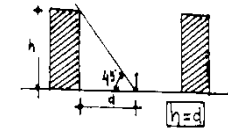
- |                   |             |
|-------------------|-------------|
| Recreational      | Residential |
| Institutional     | Commercial  |
| Under development | ISBT        |
| Parking           | grass       |

CIRCULATION AREA

COLUMN  
 GRID 6X6 M

COLUMN SIZE  
 0.6X0.6 M

**BUILT TO OPEN RATIO**



Vertical Zoning

# ACADEMIC WORKS

## FOURTH YEAR B. ARCH DESIGN VII



PROPOSED SITE AT KHED-SHIVAPUR.

SURAJ B. WAGHMODE  
4TH YEAR CM  
SCOA PUNE



PROPOSED SITE AT KHED-SHIVAPUR.  
SURAJ WAGHMODE 4<sup>TH</sup> YEAR CM

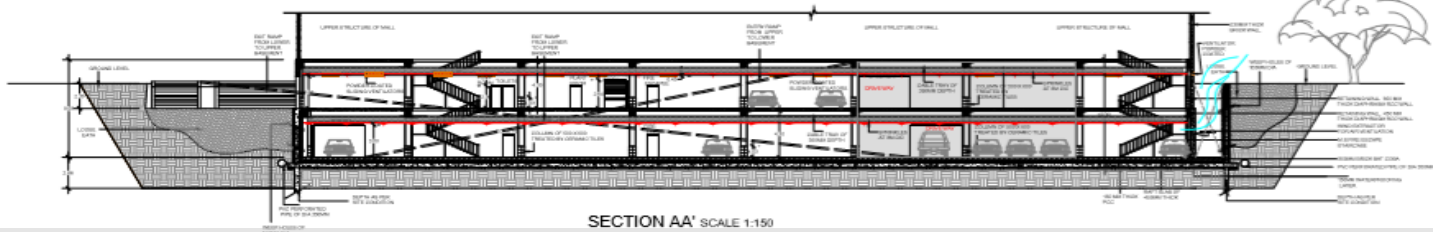
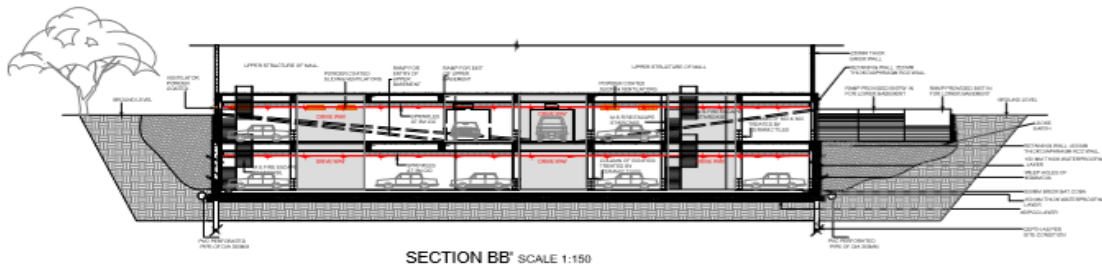
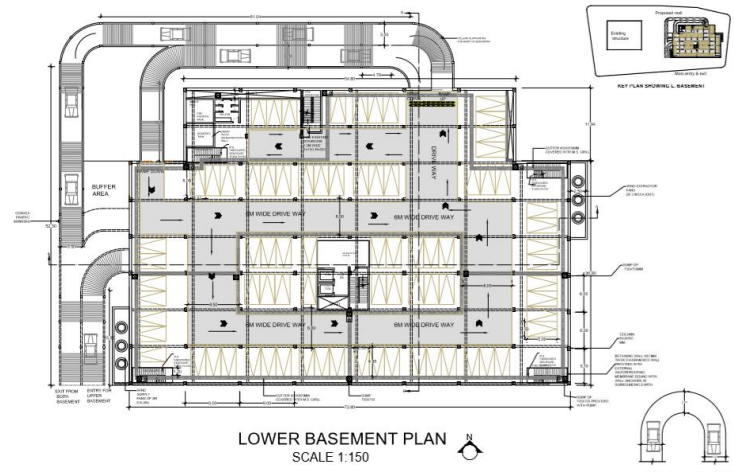
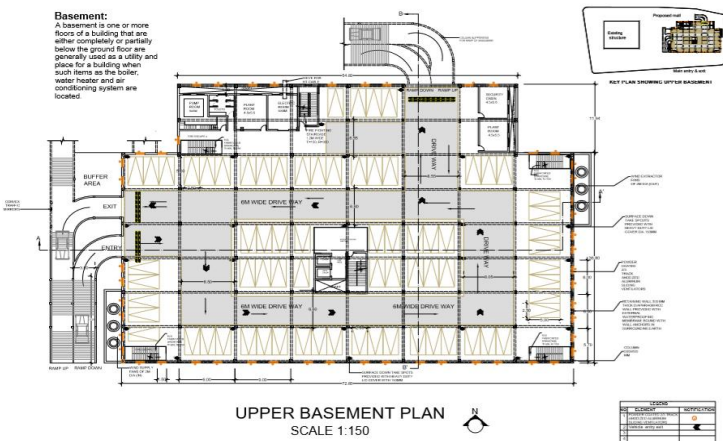


PROPOSED SITE AT KHED-SHIVAPUR.

SURAJ B. WAGHMODE  
4TH YEAR CM  
SCOA PUNE









**Basement:**









A basement is one or more floors of a building that are either completely or partially below the ground floor are generally used as a utility and place for a building when such items as the boiler, water heater and air conditioning system are located.











# ACADEMIC WORKS

## STUDY TOUR: F.Y

<b>First Year B. Arch. 2018-19</b> Village Settlement study in Maharashtra			
Division A	Place: Ratanwadi (205 Km from Pune), Date: 27 <sup>th</sup> - 29 <sup>th</sup> January 2019 Accompanying Faculty: <b>Ar. Manasi Khope,</b> Ar. Tanmayee Panse, Ar. Rohit Labhashetwar Number of students: 37		
Division B	Place: Bhandardara Date: 13 <sup>th</sup> - 15 <sup>th</sup> January 2019 Accompanying Faculty: <b>Ar. Manjusha Gokhale,</b> Ar. Pallavi Patil Number of students: 40		
Division C	Place: Anjarle Date: 22 <sup>nd</sup> - 25 <sup>th</sup> January 2019 Accompanying Faculty: <b>Ar. Pallavi Patil,</b> Ar. Megha Butte Number of students: 30		
Division D	Place: Theur (205 Km from Pune), Date: 20 <sup>th</sup> & 21 <sup>st</sup> December 2018 Accompanying Faculty: <b>Ar. Pradnya Patki,</b> Ar. Snehal Phalke, Ar. Anjali Agarwal, Prof. Nalini Number of students: 36		

Second Year B. Arch. 2018-19			
Division A	Place: Jodhpur, Jaisalmer Date: 5 <sup>th</sup> – 9 <sup>th</sup> January 2019 Accompanying Faculty: <b>Ar. Mugdha Kulkarni</b> , Ar. Vikram Shah Number of students: 32		
Division B	Place: Badami, Hampi, Pattadakal Date: 7 <sup>th</sup> – 12 <sup>th</sup> January, 2019 Accompanying Faculty: <b>Ar. Leena Jain</b> , Ar. Anuja Gujar Number of students: 33		
Division C	Place: Jodhpur, Jaisalmer Date: 10 <sup>th</sup> – 15 <sup>th</sup> January, 2019 Accompanying Faculty: <b>Ar. Manjusha Zalte</b> , Ar. Priti Dhanwat Number of students: 35		
Division D	Place: Ahmedabad, Date: 17 <sup>th</sup> – 24 <sup>th</sup> December, 2018 Accompanying Faculty: <b>Ar. Kirti Bajare</b> , Ar. Nikita Mahajani Number of students: 36		

Third Year B. Arch. 2018-19			
Division A	Place: New Delhi Date: 4 <sup>th</sup> - 9 <sup>th</sup> January 2019 Accompanying Faculty: <b>Prof. Kalpana Hadap</b> , Ar. Namrata Khatod Number of students: 34		
Division B	Place: Chandigarh Date: 9 <sup>th</sup> - 15 <sup>th</sup> December, 2018 Accompanying Faculty: <b>Ar. Niketa Patil</b> , Ar. Saurabh Shinde Number of students: 35		
Division C	Place: Jodhpur, Jaisalmer Date: 10 <sup>th</sup> - 15 <sup>th</sup> January, 2019 Accompanying Faculty: <b>Ar. Vinita Lavate</b> , Ar. Kavita Patil Number of students: 38		
Division D	Place: Chandigarh Date: 4 <sup>th</sup> - 8 <sup>th</sup> December, 2018 Accompanying Faculty: <b>Ar. Anita Kavthekar</b> , Ar. Anjali Rasane Number of students: 26		



<p align="center"><b>SITE VISIT FOR ARCHITECTURAL DESIGN IN URBAN CONTEXT</b> <b>Fourth Year B. Arch. 2018-19</b></p>			
<p>Division A</p>	<p>Place: Kolhapur Date: 19<sup>th</sup> December 2018 Accompanying Faculty: <b>Ar. Pranoti Lad</b>, Ar. Neha Anwane, Ar. Manasi Khope Number of students: 34</p>		
<p>Division B</p>	<p>Place: Chandni Chawk, Pune Date: 18<sup>th</sup> December 2018 Accompanying Faculty: <b>Ar. Mukta Pandit</b>, Ar. Swana Hiwarkar Number of students: 38</p>		
<p>Division C</p>	<p>Place: Shirur Date: 19<sup>th</sup> &amp; 24<sup>th</sup> December 2018 Accompanying Faculty: <b>Ar. Anuja Inamdar</b>, Ar. Nidhi Shand Number of students: 32</p>		
<p>Division D</p>	<p>Place: Talegaon Dabhade, Pune Date: 12<sup>th</sup> &amp; 13<sup>th</sup> December 2018 Accompanying faculty: Ar. Sudhir Deshpande, <b>Ar. Poonam Pasare</b>, Ar. Shreya Shirsath Number of students: 31</p>		

# ACADEMIC WORKS

## M. ARCH (COMPUTER APPLICATION)



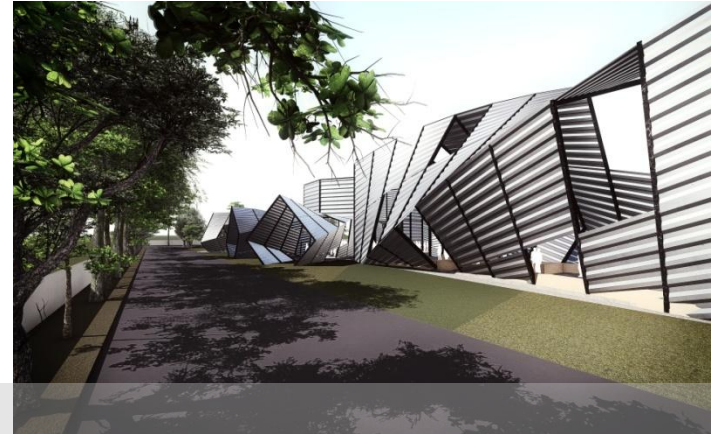
**WORKSHOP: ORGANIC FORM MADE FROM A COMPOSITE OF JUTE AND RESIN:** Form was obtained naturally by gravity and material is then coated with resin to harden and retain its shape. After several coats of resin, the form was tested to its bearing capacity, resulting on carrying load of 100kgs.

# ACADEMIC WORKS

## M. ARCH (COMPUTER APPLICATION)



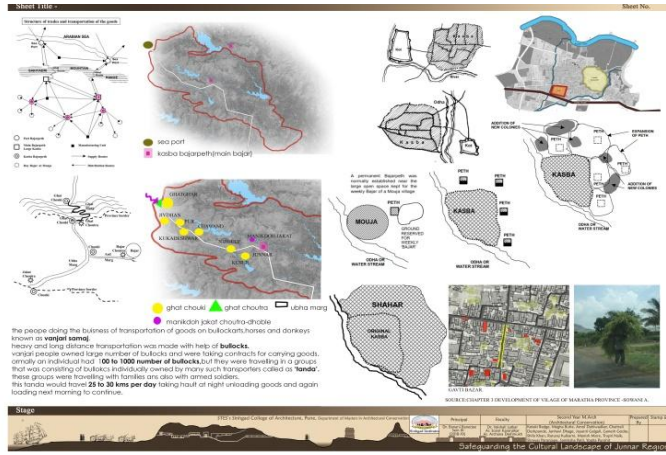
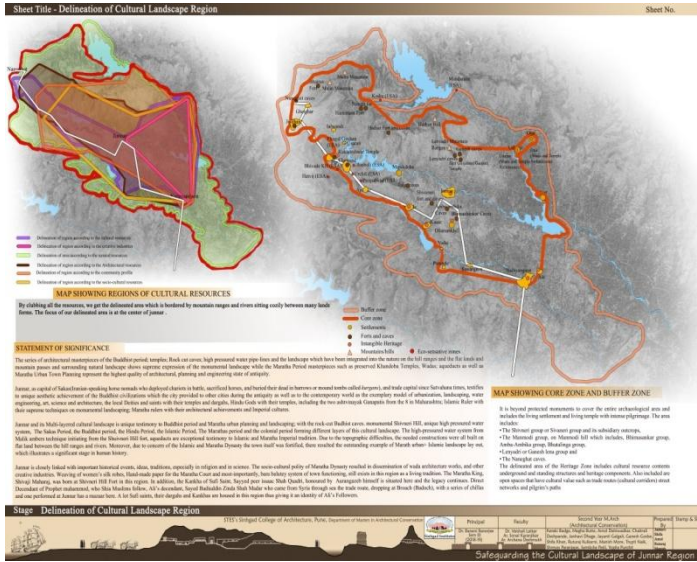
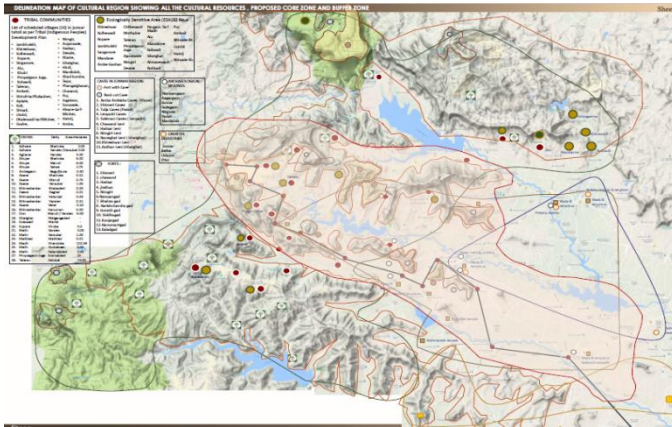
SAJAN MEHTA M.ARCH – COMP APPLICATIONS



# ACADEMIC WORKS

## M. ARCH ( ARCHITECTURAL CONSERVATION)

Safeguarding Cultural Landlandscape of Junnar region during the Indo –Roman International Trade ,Maharashtra: The students of S.Y.M.Arch studied the well know tourist hub of Junnar region in western Maharashtra dotted by various hill forts and largest caves groups with 1<sup>st</sup> c.bc rock cut architecture which once guided the historic Indo-roman trade to the inlands of Deccan from Bharuch to Paithan. The academic exercise was designed aiming to understand the processes of shaping of a cultural landscape under the impact of several intangible and tangible factors and identification of all the cultural resources who were evolved in this process and as a result of this impact of international and national trade culture on the trading settlements and commercial towns in the rugged landscape of steep sahyadri ranges. The exercise also aimed in formulation of conservation policies and management strategies for protection on cultural resources. The exercise culminates into a design program in historic context catering to modern needs of tourism pressures on this region.

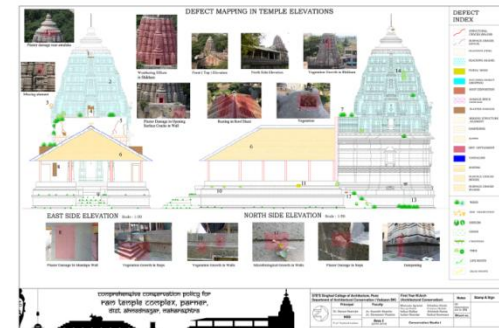
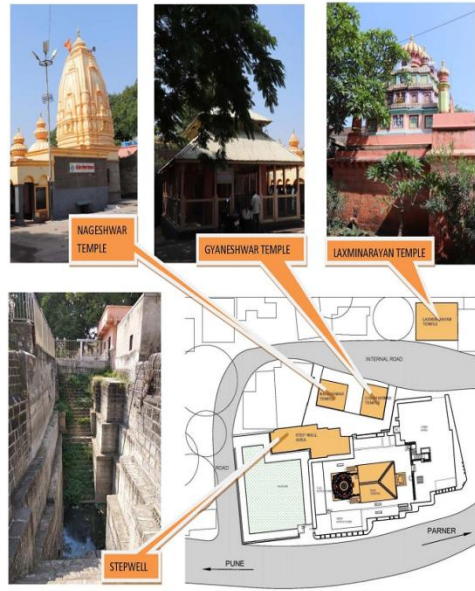
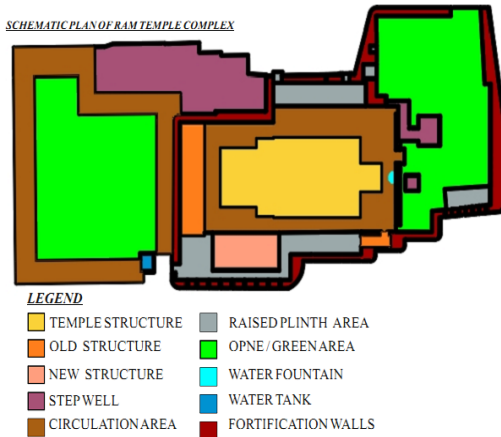


# ACADEMIC WORKS

## M. ARCH (ARCHITECTURAL CONSERVATION)

The students of F.Y. M.Arch studied a 18<sup>th</sup> century Maratha temple complex-Ram Mandir complex at Parner in Ahmednagar with respect to a religious monument and its impact on the surrounding built core shaping its social significance. The academic exercise was designed aiming to document the precinct and identify its heritage potential and formulating a conservation proposal along with Adaptive reuse for it in face of development pressures. Ram temple complex at Parner is an example of 18th century Maratha temple architecture built under the patronage of Shri .Raghav Raoji Mahadeo, son of shri .Raoji Mahadeo, the Phadnis of Sardar Holkar in town of Parner. The temple is about 250 years old. The construction of temple Started in circa 1776 AD. The fortified temple complex consists of surrounding remains of wadas (not in existence today); one step-well, one fountain One landscape garden is in the south side of the temple complex along with many surrounding structures. Ram Mandir temple complex depicts a traditional pattern of planning i.e. wada (residential courtyard planning) sharing a common worship space i.e. temple in the center and a step well fulfilling the needs of water requirement for temple and residents of wada. The temple complex is surrounded by other group of temples such as Nageshwar temple, Gyaneshwar temple and Laxmi-Narayan temple with one big step-well in common.

SCHEMATIC PLAN OF RAM TEMPLE COMPLEX



## DESIGN INTERVENTION:

WE AIM TO ACHIEVE MAXIMUM OUTPUT FOR ORGAN DONATION THROUGH THIS DESIGN THIS CAN BE DONE BY CHANGING THE MINDSET OF OLDER GENERATIONS AND BRINGING AWARENESS TO THE YOUNGER ONE. IT IS A PLATFORM REPRESENTING THE ANOMALY AND PROVIDES A SUBTLE YET EFFECTIVE SOLUTION WHICH WILL HAVE A MAJOR IMPACT ON SOCIETY. WE PROPOSE A CIRCULAR PEDESTAL UPON WHICH THE DESIGN IS PLACED. THE CIRCULAR FORM REPRESENTS THE PRADAKSHINA PATH, A COMMON ELEMENT FOUND IN HINDU TEMPLES. UPON THIS PEDESTAL ARE FOUR SHORT COLUMNS BEHOLDING THE VITAL ORGANS FOR A HUMAN TO SURVIVE. THE COLUMNS ARE DIVIDED ALONG THE CIRCULAR AREA. THE ORGANS ARE PLACED TO CREATED AWARENESS ABOUT THE RESPECTIVE HEALTH ISSUES. THE BANYAN TREES ARE PLACED IN THE CENTRE OF THIS CIRCULAR PLATFORM WHICH TALKS ABOUT ORGAN DONATION. THE SYMBOLISM IS EASY TO RELATE AND EFFECTIVE AS NATURE IS INCORPORATED IN THE DESIGN. THE SIMPLICITY IS DESIGNED FOR BETTER RELATIVITY AND CONNECTIVITY TO DESIGN.

THE SCULPTURES REPRESENT THE VITAL ORGANS OF HUMAN BODY. EACH ORGAN IS DESIGNED WITH BENEFITIVITY IN RELATION TO ITS FUNCTIONALITY. THE TREES DEPICT THE ACT OF ORGAN DONATION. THE DESIGN SHOWS AN EXAMPLE OF DONATION CARRIED BY NATURE.

## KIDNEY: ALCOHOL BOTTLES

ALCOHOL CONSUMPTION CAUSES DIRECT STRESS ON THIS ORGAN. THE SCULPTURE MADE WITH USED BOTTLES TALKS BOTH ABOUT THE AWARENESS AND PREVENTION OF ALCOHOL CONSUMPTION.



## LIVER : FAST FOOD

THE MODERN LIFESTYLE HARMS ONE'S NUTRITION AND EATING HABITS. THE SCULPTURE DEPICTS FAST FOOD WHICH MAY BE TEMPTING FOR SOMEONE, BUT THE CONSEQUENCE FOR FATTY LIVER DISEASE, NOT ONLY CAUSE THIS CAUSE OBESITY BUT INCREASES THE RISK OF DIABETES.



## ANOMALY IN DESIGN REQUISITE:

THE DESIGN ACTS A SINGLE EFFECTIVE UNIT WHICH PERSONIFIES ORGAN DONATION. THE BANYAN TREE CONSIDERED HOLY IN MANY RELIGIONS SYMBOLIZES THE DONOR WHO HELPS CREATE A NEW BEGINNING TO A RECIPIENT. THE ORGANS AROUND THIS TREE PROVIDE CLARITY ABOUT SOME ORGANS THAT CAN BE DONATED. THE BANYAN TREE ALSO BRINGS OUT ESSENCE OF THE TEMPLE AND MAINTAINS IT THROUGHOUT THE DESIGN. THE DIFFERENT PERSPECTIVE TO THE DESIGN IS PROPOSED SO THAT THE TARGETED VIEWERS UNDERSTAND THE DEEP MEANING THAT IS VAGUELY THOUGHT ABOUT BUT NOT SERIOUSLY TAKEN INTO CONSIDERATION.

## ANOMALY IN METHODOLOGY OF CONSTRUCTION:

VARIOUS WASTE MATERIAL SUCH AS BOTTLES AND CIGARETTE BOXES ARE RECYCLED TO CREATE AN ELEMENT WHICH IMPACTS THE MINDSET OF SOCIETY. THE DESIGN CONSISTS OF A 9 M DIAMETER PLATFORM WHICH IS 450 MM ABOVE GROUND LEVEL. THE PLATFORM IS SURROUNDED BY 1.5M PATHWAY FOR VIEWING THE SCULPTURE AND THE BANYAN TREE.

## ANOMALY IN AESTHETICAL CONCERN:

A RAW APPEAL IS GIVEN TO EACH OF THE ORGAN SCULPTURES TO IMBIBE THE ISSUES CAUSING DAMAGE TO THE SPECIFIC ORGAN. A HARSH MESSAGE IS SENT MAKING A MARK ON THE USER'S MIND. THE SITE SELECTED IS A TEMPLE COURTYARD. THIS MODULE SETS PERFECTLY IN THE TEMPLE ATMOSPHERE. ITS SIMPLICITY PLAYS IMPORTANT ROLE IN MAKING THE OLD GENERATION COMFORTABLE. COLOURS ARE USED TO HIGHLIGHT THE FUNCTIONALITY OF A BANYAN TREE.



PLAN



THE UNEXPECTED KNOCK, THE UNEXPECTED CALL.

THE TIRED SADDENED DOCTOR'S FACE SEEMED TO SAY IT ALL. EVERYTHING HAD BEEN DONE, YOUR HEART SANK AT THE SOUND. AND NOW YOU FINALLY KNEW, YOUR LOVED ONE WAS DOWN.

AS YOU LEARNED THE UNWANTED TRUTH, THERE WAS NOTHING MORE TO DO YOUR EMOTIONS TOOK FLIGHT TO SAY, NOW HOW DO WE MAKE IT THROUGH. YOUR LOVED ONE DIDN'T PLAN IT, AS YOU FACE THIS AWFUL STRIFE BUT NOW YOU FACE THE QUESTION, DO YOU GIVE THE GIFT OF LIFE.

THOUGH YOUR SORROW CANNOT BE MEASURED, OUR THANKS IS GREAT INDEED.

FOR DONORS ARE THE HEROES WE THOUGHT WE'D NEVER NEED.

AND DONORS ARE THE HEROES WE NEVER GOT TO KNOW.

THEY'VE LOST IT ALL, BUT IN THAT LOSS THEY GAVE LIFE THE GREATEST GIFT OF ALL.

## HORRORS OF THE CITY

## HEART: NUTS AND SCREWS

REPRESENT THE TECHNOLOGICAL AND MECHANICAL ADVANCEMENTS MADE IN OUR LIVES. THE LEISURE TAKES A TOLL ON HEALTH OF AN INDIVIDUAL, INCREASING THE RISK OF HEART ATTACK AND BLOOD PRESSURE.



## LUNGS: CIGARETTE PACKETS

INCREASING WORK STRESS IS ONE OF THE MAJOR BENEFACTORS TO CAUSE SMOKING. THE SMOKE INHALED CAUSES PRODUCTION OF TAR IN LUNGS CAUSING MAJOR LUNGS DISEASES. THE PACKETS ALSO GIVE OUT A BOLD STATEMENT AGAINST SMOKING.



## CONCLUSION

WE INTEND TO INCREASE THE NUMBER OF DONORS ALONGSIDE THE AWARENESS OF THE TOPIC. IDEA SUGGESTS TO BREAK THE ORTHODOX CREEDENCE THAT RELIGION PREVENTS ORGAN DONATION. TEACHING THAT HELPING SAVE ONE LIFE OR ENHANCING IT FOR BETTER IS ONE OF THE MAIN TEACHINGS OF ANY RELIGION. PROPAGATE THE IDEA THAT ORGAN DONATION IS THE WAY FOR MEDICAL ENHANCEMENTS AND DEVELOPMENTS.

THIS MODULE TARGETS THE ORTHODOX THINKING AND FORCES ONE TO ACCEPT THIS ANOMALY. THE GENERATION THAT TAUGHT US ABOUT VALUES AND RULES OF NATURE CAN BE EDUCATED ABOUT THE MOST VALUABLE DONATION IN THE WORLD THAT CAN SAVE MILLIONS OF LIVES.

# CO-CURRICULAR

## NASA: TROPHY ENTRIES

### YOU ARE NEVER TOO OLD TO REGIFT YOURSELF

#### CONCEPT-

##### WHAT IS ORGAN DONATION-

ORGAN DONATION IS GIVING AN ORGAN TO SOMEONE ELSE WHO NEEDS A TRANSPLANT. ORGAN DONATION IS AN AMAZINGLY GENEROUS ACT AND SAVES THOUSANDS OF LIVES IN THE INDIA EVERY YEAR. HOWEVER, THIS RELIES ON DONORS AND THEIR FAMILIES AGREEING TO DONATE.



##### WHY ORGAN DONATION?

ANOMALY IS INTERPRETED AS A THOUGHT PROCESS CONTINUED FOR AGES IN THE SOCIETY WE LIVE IN. ORGAN DONATION IS ONE SUCH THOUGHT PROCESS THAT IS UNACCEPTED ONE TOO MANY.

EVEN THOUGH THERE IS AWARENESS ABOUT THIS TOPIC THE DONORS SEEM TO REMAIN CONSTANT AND WITH TIME THE LIST OF REGISTRY IS INCREASING. THE ATTITUDE TOWARD ORGAN DONATION IS VERY CASUAL WHERE THERE IS MUCH AWARENESS YET NO QUANTIFIABLE RESULTS.

THE OLDER GENERATIONS RECEIVE THE CONCEPTS OF ORGAN DONATION DIFFERENTLY USING RELIGION AS A SHIELD TO HIDE THE INSECURITY TOWARDS THE TOPIC. IT IS THIS IDEOLOGY, WE INTEND TO CHANGE AND CONSIDER IT AS AN ANOMALY.

##### HOW ANOMALY IS MENTIONED ABOVE

STATISTICS  
18 PEOPLE DIE EACH DAY IN NEED FOR ORGANS AND ONE IS ADDED TO THE RECIPIENT LIST EVERY 10 MINUTES.  
FACTS  
A DONOR CAN BE OF ANY AGE, WITH MEDICAL HISTORY, RELIGION.

DECEASED DONORS CAN PROVIDE ORGANS SUCH AS KIDNEY'S, PANCREAS, LIVER, LUNGS, HEART, INTESTINES, BONES, SKIN, HEART VALVES, VEINS, CORNEA AND SKIN.

DONORS ARE NOT RESPONSIBLE FOR MEDICAL COSTS. ORGANS HARVESTING IS THE REMOVAL AND RETENTION OF ORGANS AND TISSUES.

ABILITY TO DONATE IS DETERMINED AT TIME OF DEATH.

HOW LONG DO ORGANS SURVIVE?

HEART - 4-6 HOURS

LUNGS - 4-6 HOURS

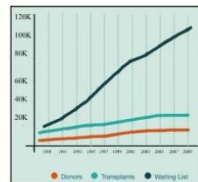
KIDNEY - 36-48 HOURS

SKIN - 10-15 HOURS



##### WHAT ORGANS AND TISSUES CAN BE TRANSPLANTED?

ORGANS AND TISSUES THAT CAN BE TRANSPLANTED INCLUDE:  
LIVER, KIDNEY, PANCREAS, HEART, LUNG, INTESTINE, CORNEA, MIDDLE EAR, SKIN, BONE, BONE MARROW, HEART VALVES, CONNECTIVE TISSUE.



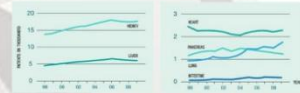
##### TYPES OF ORGAN DONATION-

###### DONATION FOLLOWING BRAIN DEATH(DDO):

WHEN A PERSON IS DIAGNOSED AS DEAD THROUGH NEUROLOGICAL CRITERIA TESTING.

THIS PERSON WOULD HAVE HAD A SEVERE BRAIN INJURY AND PERMANENTLY LOST THE POTENTIAL FOR CONSCIOUSNESS AND THE CAPACITY TO BREATHE.

THIS MAY HAPPEN EVEN WHEN A VENTILATOR IS KEEPING THE PERSON'S HEART BEATING AND BLOOD IS CIRCULATED THROUGH THEIR BLOOD.



###### DONATION FOLLOWING CIRCULATORY DEATH(DDO):

WHEN A PERSON IS DIAGNOSED AS DEAD THROUGH CIRCULATORY DETERMINATION.

THIS IS WHEN A PERSON HAS IRREVERSIBLE LOSS OF FUNCTION OF THE HEART AND LUNGS AFTER A CARDIAC ARREST FROM WHICH THE PERSON CANNOT BE SHOULD NOT BE RESUSCITATED.

###### LIVING DONATION:

WHILE YOU ARE STILL ALIVE YOU CAN CHOOSE TO DONATE THROUGH A MEDICAL OPERATION A KIDNEY (MOST COMMONLY), IN SOME CASES A SMALL SECTION OF YOUR LIVER OR LUNG.

BE A BLOOD AND ORGAN DONOR.  
ALL IT COSTS IS A LITTLE LOVE.



IF YOU SAVE THE LIFE IT IS AS  
THOUGH YOU SAVE THE WORLD.



DON'T TAKE YOUR ORGANS TO HEAVEN, HEAVEN KNOWS WE NEED THEM HERE.



##### SITE JUSTIFICATION

WE AIM TO TARGET THE OLDER GENERATIONS WHO BRING THE IDEA OF DONATION ALL TOGETHER THEIR BELIEFS FORTER UNCERTAINTY AND CONFUSION DISTURBING THE WILLING YOUNGER ONES AS WELL. RELIGION IS GOVERNING FACTOR AFFECTING THEIR BELIEFS. WE AIM TO ERADICATE THE MISCONCEPTIONS, ELIMINATING THEIR MISCONCEPTIONS WITH CLARITY AND THE ULTIMATE TRUTH. A SIMPLE SANCTUM IS A PERFECT PLACE TO ACHIEVE THIS GOAL AND PROPAGATE THE WILL TO HELP SAVE ONE'S LIFE.

##### DESIGN INTERVENTION-

PUNE CITY IS KNOWN AS THE EDUCATIONAL HUB OF INDIA; IT HOUSES MANY RENOWNED HOSPITALS AND IS KNOWN FOR ITS MEDICAL HISTORY.

DESPITE ALL OF THIS 10 PEOPLE DIE EVERY DAY DUE TO LACK OF ORGAN DONORS.

IT IS HORRIFYING THAT THERE IS MUCH AWARENESS BUT NEGLECTIBLE RESULTS FOR ORGAN DONATION. BEING AT THE PINNACLE OF EDUCATION, THE SOCIETY PAYS NO NEED TO UNDERSTAND ORGAN DONATION, THE RESPONSE OF OUR SOCIETY IS A LITTLE AMBIGUE.

THE FACT THAT RELIGIOUS BELIEFS COME TO QUESTION THE HUMANITY AND WILLINGNESS TO HELP A HUMAN BEING IS NO LESS THAN A HORROR.

THIS UNFORTUNATE STATE OF THE SOCIETY WE LIVE AS A MAJOR ANOMALY TODAY.

## HORRORS OF THE CITY

**CASE STUDY**  
3-year-old man's organs give new lease of life to six  
5 lakh patients need organ transplants in the country

Life Can Begin After Death

Brain-dead Bengali woman gives life to 10 children

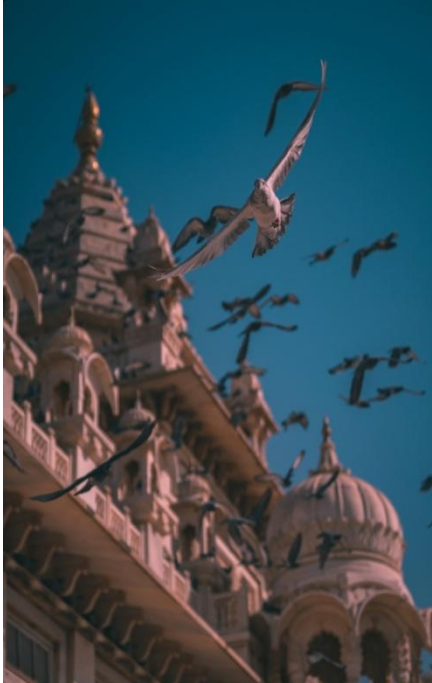
FATHER GIVES KIDNEY TO SAVE DAUGHTER

One consent saves 5 lives

Free organ donation at AIIMS in single week saves 65 lives

Myth causes some to opt out as organ donors





OMKAR DANDAVATE 2<sup>ND</sup> YEAR DIV A



© Omkar Dandavate



NAMRATA SADHALE 3<sup>RD</sup> YEAR



NAMRATA SADHALE 3<sup>RD</sup> YEAR



NAMRATA SADHALE 3<sup>RD</sup> YEAR



# PHOTOGRAPHY



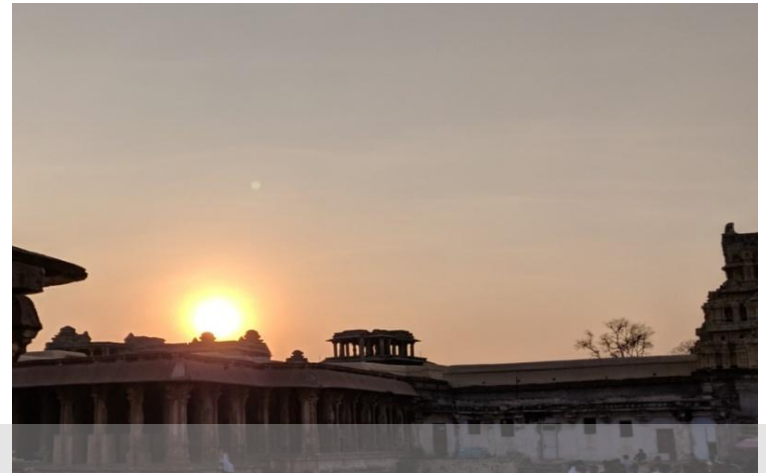
AMAR KAMBLE 2<sup>ND</sup> YEAR

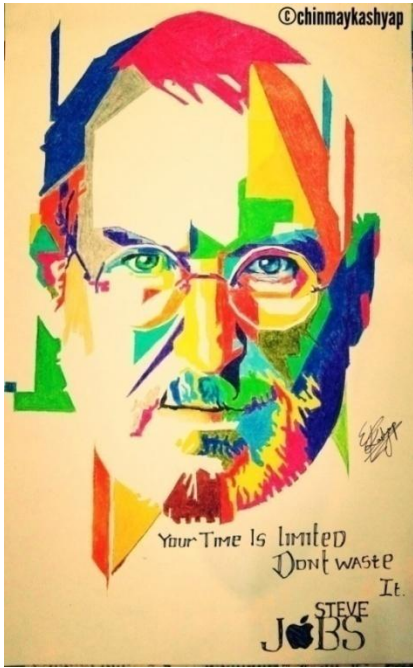


OMKAR  
DANDAVATE 2<sup>ND</sup> YEAR



AMAR KAMBLE 2<sup>ND</sup> YEAR





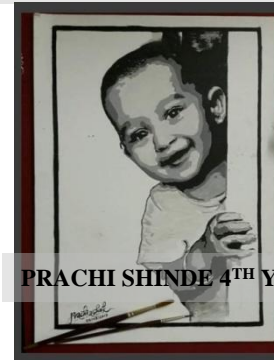
CHINMAY KASHYAP 2<sup>ND</sup> YEAR



NIRAJARA BHOSALE 4<sup>TH</sup> YEAR



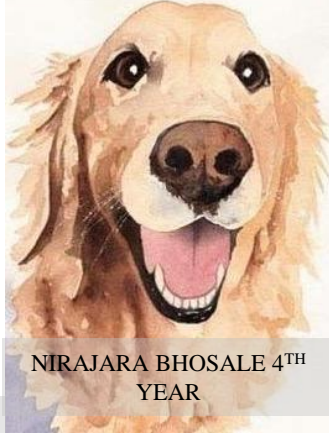
CHINMAY KASHYAP 2<sup>ND</sup> YEAR



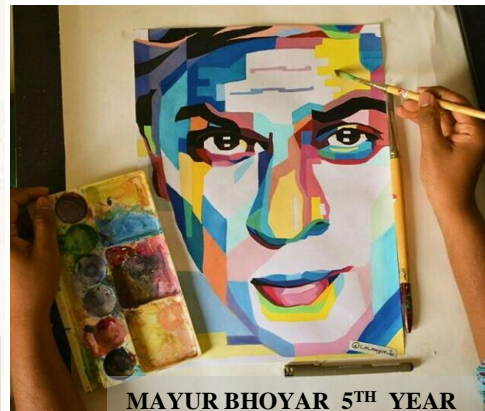
PRACHI SHINDE 4<sup>TH</sup> YEAR



MAYUR BHOYAR 5<sup>TH</sup> YEAR



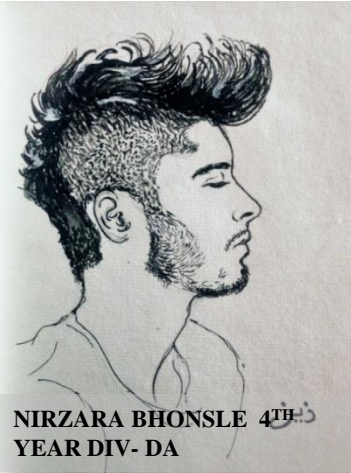
NIRAJARA BHOSALE 4<sup>TH</sup> YEAR



MAYUR BHOYAR 5<sup>TH</sup> YEAR



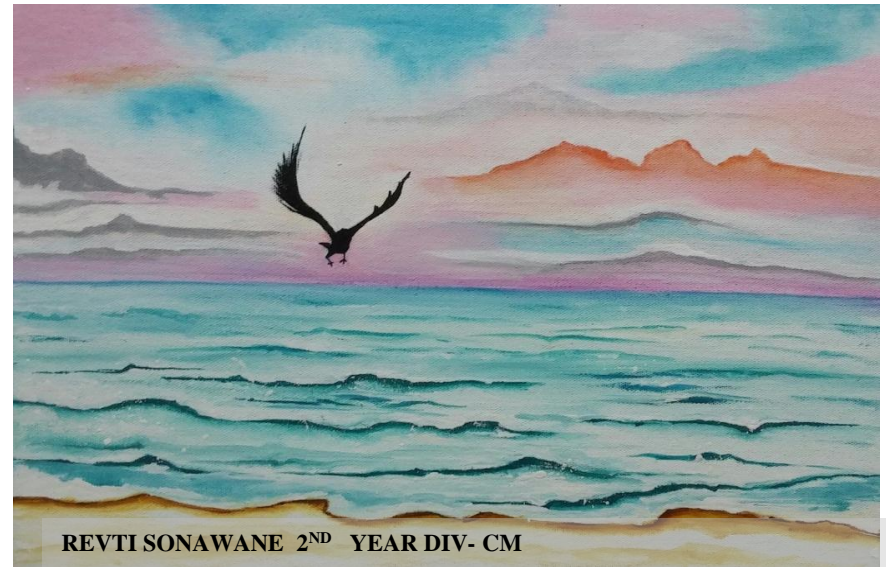
# SKETCHES



**NIRZARA BHONSLE 4<sup>TH</sup> YEAR DIV- DA**



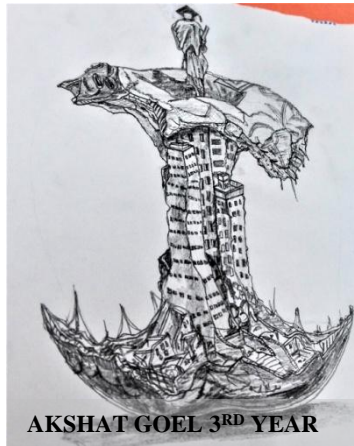
**SHASHANK SHETE 2<sup>ND</sup> YEAR**



**REVTI SONAWANE 2<sup>ND</sup> YEAR DIV- CM**



**RENUKA JADHAV**



**AKSHAT GOEL 3<sup>RD</sup> YEAR**



**REVTI SONAWANE 2<sup>ND</sup> YEAR DIV- CM**



## EXTRA-CURRICULAR

### Poetry

Penning down poetry is not a piece of cake. It is a form of deep emotional expression. It is the bared soul of the poet. A few lucky ones are blessed with the ability to write down their thoughts in verse and it is, to an extent left undiscovered. Poetry can be deemed as an art.

An art of permuting words, an art which is almost like soliloquizing. It is beautiful, clean, pure, straight from the heart. Since ancient eras, poetry has swept away the learned, by the sheer omniscience of it. Or perhaps, the divine yet bitter truth hidden in it. It is scorned by the supposedly strong, a sign of excessive emotional involvement. They are the superficial ones, for whom materialistic ambitions are held more dear.

Too little of the best verse, sees the light of day. Poetry should be admired and respected, for it can be regarded as the most vertiginous form of articulation.

Rashmin Kale

III (B)

22	12	18	87
88	17	9	25
10	24	89	16
19	86	23	11

### QUIZ & PUZZLES

#### Ramanujan's Magic Square

Sum of Any column, row, corner,  
and our squares = 139

## EXTRA-CURRICULAR

### POEMS WRITTEN BY STUDENTS

Behave ' when she was too much  
...

'Speak' when she was gloomy

Concealed her glowing wishes

That she knew were safe in her  
mind ,

But hard to come alive.....

She was finding that sky ,

Where the birds is free to  
glide...

But that night she cried so hard

Even her angel felt bad.....

**AKSHATA PATIL**  
**2<sup>ND</sup> YEAR DIV C**

Many thoughts running in my mind Wish I could control and  
supervise .

People say don't listen to your mind

Pay attention to your heart voice .

Sometimes , that voice is do heard to hear,

You need a quite place place to cure .

I have many secrets store ,

Scared to drop- ship thousand of thoughts

Will they receive it the same way

I feel ?

No , they won't !

You must learn to cancel them

Let your own find ignite answers .

## EXTRA-CURRICULAR

कट्टा.....

बघायला गेल तर फ़वत एक जागा एक साधीशी जागा  
जिथे कितीतरी लोक रोज येतात निघूनही जातात पण तो कट्टा  
तिथेच असतो... स्थिर... या अस्थिर आयुष्यात स्थिर पणाची  
जाणीव करुन देतो तो हा कट्टा...  
कितीतरी गोष्टी बघितल्यात याने कितीतरी नाती  
जोडताना तर काही तुटताना पाहिल्यात...कोणाच Birthday  
Celebration तर कोणासाठी वाहिलेले अश्रू पाहिलेत..  
एवढ सगळ पाहत असताना स्थिर असला तरीही तो  
सोबत असतो.त्याच्या फ़वत असण्याने एक आधार मिळतो.  
बोलता बोलता सहजच बोलल जात चला कट्टयावर भेटू एव्हाना  
हा कट्टा आपल्या आयुष्याचा एक सुंदर असा भाग झालेला

**RUCHITA SALUNKE**  
**3RD YEAR DIV D**

असतो ज्यावाचून करमत नाही..

मग प्रश्न असा कि हा कट्टा आपलीही आठवण काढत

असेल का?? रोज येणारी मुल जर कधी आले नाही तर त्यालाही

चुकल यासारख वाटत असेल का? नाती जुळण्यामध्ये त्याचाही

एक भाग आहे...College संपल कि काही आठवेल न आठवेल

माहीत नाही पण हा कट्टा नेहमी आठवेल... कोणी भेटेल न

भेटेल माहत नाही पण हा कट्टा तिथेच असेल...स्थिर.....

.....Ruchika

## EXTRA-CURRICULAR

**HAPPILY EVER AFTER?**

The fairy tales cease to exist,  
 the moment reality sets in.  
 It is easy to talk yourself into believing,  
 There are still happy endings.  
 Nothing is a bed of roses,  
 There are no wish granting factories.  
 It is an endless drudgery,  
 to achieve a status in society.  
 The magic of childhood ends,  
 When heartbreak crushes your insides.  
 No Prince Charming on the white horse,  
 Comes to brighten your nights.  
 The fairy godmothers never appear,  
 Despite your pleading whispers in the dark.  
 Reality is cruel, cold and calculating.  
 Gone are the days when you wished upon the stars.

RUCHIKA SALUNKE 4<sup>TH</sup> YEAR CM

धुप मे खडा मुसाफिर मकान दूढ रहा था कल  
 मै भी सादा कागज लेके बैठ गया एक  
 मकान बनाने सोच चलो ईसकी मुसीबत कर  
 देते है हल! रात भर जाग के Pencil से आदी टेदी  
 सारी लकीरे जोड दी ईट पत्थर की  
 ददवारोपे आशियाने की छत भी डाल दीखखडकी  
 दरवाजो सेरोनि के कुछ कतरेआ रहे थे फिसल  
 धुप मे खडा मुसाफिर मकान दूढ रहा था कल  
 फिर एक रात ख्वाब मै मुसिरने घर का दरवाजा  
 खोला आयत मैशमलनेवाले खुदा की तरह पररवार  
 नेपुरा मकान टटोला, मेज पर अखबार  
 बबखरेददवारोपे ख्वाब दूंग गए, एक नन्ही बच्ची  
 नेहाथी,घोडा ननकाल कर पुरी दीवार रूग दी,  
 फकस कदर हसीन सेहसीन हो रहे थे पल, धूप  
 मै खडा मुसाफीर मकान दूढ रहा था कल

## EXTRA-CURRICULAR

### History of Historians

An English architect and architectural historian, born in 1866, immortalized by his creation of colossal book on history of world architecture. He studied in all premiere institutes of that era as King's College London, University College London, Royal Academy Schools, the Architectural Association, and the École des Beaux-Arts, Paris. He joined his father's practice and in 1896, both jointly wrote the book *A History of Architecture on the Comparative Method*. He is none other than Sir Banister Fletcher (junior) or Banister Flight Fletcher, writer of the colossal textbook A History of Architecture.

Banister Fletcher (senior), father of Sir Banister Fletcher (junior) and co-author was born in 1833, was an English architect and surveyor, a politician and prolific author, who published many text books of architecture. He was also a Professor of Architecture at King's College. His younger son Herbert Phillips Fletcher was an architect too, all three jointly practiced in their firm Banister Fletcher & Sons.

Fletcher (junior), after twenty-two years of his father's death, made a major revision of the book in 1921, where a large portion of the text was rewritten by him and his first wife, many drawings were replaced and his father's name was removed. This 6th edition published in 1953, transformed a handbook into a bible of history of world architecture to generations of students and architects.

A note that says at the end of the book, that *'a careful study of the buildings themselves is necessary to appreciate thoroughly the progress of the style, and many being within the reach of the student, measured drawings and sketches should be made of these, which will impress the different features on the mind more thoroughly than study solely from books.'*

The book immortalizes father-son duo Professor Banister Fletcher and Banister F. Fletcher, do need some introduction, this tribute attempts to do so.

**Dr. Banani Banerjee**  
**Principal**



# EXTRA-CURRICULAR

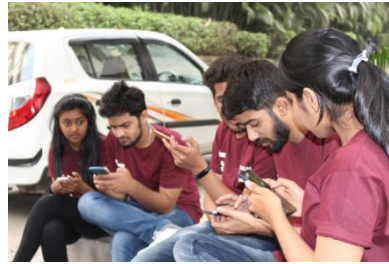
## BURNOUT 2019 (Indoor Sports Events)

SCOA has always been performing well in various sporting events at various tournaments. This year an Indoor Sports Event – BURNOUT 2019 was organized on 5<sup>th</sup> & 6<sup>th</sup> February, 2019 by Susamvad Sports' coordinators. The main theme or concept of this Indoor Sports Event was to “Turn Our Studios into Playzones “. It was planned as a two day Inter Class Tournaments and consisted of a total of 5 games. These were 1) BOX FOOTBALL 2) KHO-KHO 3) TUG OF WAR 4) ON THE SPOT GAME 5) PUBG. The venues were in Multipurpose hall, Assembly hall, courtyard and corridors. All the matches were scheduled from 2pm to 6 pm filled with high sporting caliber all the winners being declared. The main motive of increasing interaction among the students was successfully achieved.



# BURNOUT 2019

# EXTRA-CURRICULAR



**PUBG MOBILE**

**TUG OF WAR – FACULTY**



**KHO-KHO**

**BOX FOOTBALL**

**UNCONVENTIONAL GAME – STUDENTS**

## CO-CURRICULAR

### ANNUAL EXHIBITION

#### **Title: LEARNING FROM THE PRITZKER PRIZE WINNERS**

Date: 13<sup>th</sup> & 14<sup>th</sup> February 2019

The Exhibition was divided into two parts, students works and theme panels. The theme of the exhibition was retrospective learning from selected architects who had been awarded the Pritzker Prize. The Exhibition was inaugurated by Mr. Pratap Jadav, National President of IIID. He presented his works as well as contributed with his valuable thoughts to the students.



A Photography Competition was held where the chief guest Mr. Pratap Jadav selected the winners.





94 students of Sinhgad College of Architecture painted G R Palkar Primary School, Karvenagar, Pune on 14th to 16th Dec 2018



Blood Donation camp was arranged at SCOA on 8<sup>th</sup> March for SKN Hospital, where 100 bottles of blood were collected.

## EVENTS

### **Nirbhaya Kanya Yojana:**

### **“Reward Me” grooming programme for P& G Brands**

A one-day Workshop on **“Reward Me” grooming programme for P&G Brands** was held on **Tuesday 18<sup>th</sup> Dec 2018** at multipurpose hall of Sinhgad College of Architecture for girl students under the sponsorship of Board of Student Development, SPPU. Total 144 students & 14 staffs participated.

The objective of this workshop is to enhance inner confidence to face the corporate world for girls. The session was conducted by Mrs. Prachi Jain, who gave lecture with the help of slide presentation on how to build confidence in corporate world, followed by group discussion by Mrs. Kranti Jungamwad, Programme coordinator of P&G for Pune division.

The students were given with free scalp test & skin test along with free samples of P& G Products. Students got the opportunity to learn what are the various aspects of personal grooming & tips to improve the same.



## Nirbhaya Kanya Yojana

### The Power of Being You

One day Workshop on “The Power of being you” was held on thursday 7th Feb 2019 at multipurpose hall of Sinhgad College of Architecture for all the girl students of SCOA. A total of 100 students & 05 teaching staffs participated. Dr.Nalini Patil ,Principal SNTD college of Education was the resource person. The objective of the programme was to improve IQ& EQ of girl students by activity.

In her activity based lecture, she advised students to take responsibility, dare to dream, power of belief, courage to take action, attitude is everything, develop productive habits, manage your emotions, prepare for success, balance your life & finally Change or be changed. You are NOT what you think you are. But what you think — YOU ARE! As said by— Dr. Norman Vincent Peale.

### Self Defense Activity

A one day Workshop on Self Defense was held on Thursday 8<sup>th</sup> Feb 2019 at multipurpose hall of Sinhgad College of Architecture for girl students of SCOA. Total 101 students & 4 staffs have participated. Mr. Sachin Ubale, Director Physical Education Sinhgad College of Commerce Kondhwa was the resource person. The objective of this workshop was to inculcate physical fitness amongst girls through taekwondo & martial Arts.

Mr.Sachin Ubale is aTaekwondo blackbelt 1Dan( ukkiwon South Korea),National referee( taekwondo sport),State & National Medalist for Karate . He gave tips to students how to fight back in case they face awkward situation by male counterpart or crowd. In the Second session, he along with two associates Mr.Ashutosh Mishra & Mr.Pravin Kumar demonstrated basic Taekwondo techniques like kicks, block to safeguard from opponents.



## EVENTS

### Disaster Management workshop

Two days Workshop on disaster management was held on 5th & 6th Feb 2019 at IT Seminar Hall. Total 147 students participated.

Day 1:

The Session was conducted by Mr. Nilesh Karmarkar , Ex Fire Officer Tata Motors Ltd. and presently fire audit consultant for NIDM. The objective of the session was to bring awareness amongst student how we can achieve zero fire incident. He conducted the lecture in two sessions. In the First session he talked on Fire prevention and extinction and highlighted following points:

- Awareness training.
- fire audit, testing, inspections.
- patrolling rounds
- mock drills.
- good housekeeping practice.
- preventive maintenance.
- safe storage.

**The second session** was on Rescue techniques & methods with practical demonstration with the help of student volunteers. Here he talked many important aspects of disaster management like, need of new methodological and systematic approach to be inculcated in common people. He suggested students how to stay calm and handle various calamities and also demonstrated various evacuation techniques. He talked about types of importance of public addressing systems, emergency assembly point in big campuses, refuge areas in high rise building . He also conducted mock drill on evacuation where students evacuated the hall by just 1 minute 5 second time.



### Disaster Management workshop

The second day of Disaster Management (DM) was conducted by Col.V.N.Supnekar ,Director, Centre for Disaster Management, Yashada Pune. The main objective of this session was to bring awareness amongst the students how everybody can help in solve the problem of disaster management. He explained how Institutional framework was developed on the spine comprising of NDMA at center, SDMA at state level and DDMA at the District level. The role of authorities mainly relates to policy and guidelines formations and exercising monitoring function over the DM activities at their level. The institutional mechanism establishes hierarchy and is supported by response and capacity building mechanism in terms of NDRF and NIDM. This also established jurisdictional command and control over various stakeholders for DM.



Second session was conducted in the open space outside the SCOE office by Mr.Lakhan Gaikwad of Yashada & Mr. Akshay Chavan of Pune Municipal Corporation Disaster Management cell. They showed various Rescue techniques. Every participants was made to learn how to use ropes in rescue operation and how to handle casualties in disaster Management .





# EVENTS

## INDEPENDENCE DAY & REPUBLIC DAY CELEBRATION





## CONVOCATION

The convocation ceremony STES for the students graduated in 2017-18 was celebrated on 11<sup>th</sup> February 2019 at the Cultural Center of the campus. The function was graced by Chief Guest Dr. Pandit Vidyasagar, Ex-Vice Chancellor, Swami Ramanand Teerth Marathwada University, Nanded and Guest of Honour Mr. Sanjay Nibandhe, Deputy Director ARAI, Pune. The ceremony was conducted as per the directives of SPPU. It was commenced with the procession of the guests, President, STES, CEOs, Principals, Faculty and Graduates. After lighting lamp, the president and the guests addressed the audience. B. Arch degree certificates of SPPU were distributed to all the Graduates on the same day. The program was ended with vote of thanks and national anthem.



## FAREWELL FUNCTION

The farewell party was arranged for the students of B. Arch. & M. Arch. graduating in 2018-19 on 11<sup>th</sup> March, 2019 at the multipurpose hall of SCOA. The students of Fourth year B. Arch. along with Susamvad team hosted the function.

## FACULTY B. ARCH.



# CLASS PHOTOGRAPHS

## FIRST YEAR BACHELOR OF ARCHITECTURE



**DIVISION-A**



**DIVISION-B**

# CLASS PHOTOGRAPHS

## FIRST YEAR BACHELOR OF ARCHITECTURE



**DIVISION- C**



**DIVISION-D**

# CLASS PHOTOGRAPHS

## SECOND YEAR BACHELOR OF ARCHITECTURE



**DIVISION-A**



**DIVISION-B**

# CLASS PHOTOGRAPHS

## SECOND YEAR BACHELOR OF ARCHITECTURE



**DIVISION-C**



**DIVISION-D**

# CLASS PHOTOGRAPHS

## THIRD YEAR BACHELOR OF ARCHITECTURE



**DIVISION- A**



**DIVISION-B**



# CLASS PHOTOGRAPHS

## THIRD YEAR BACHELOR OF ARCHITECTURE



**DIVISION- C**



**DIVISION-D**

# CLASS PHOTOGRAPHS

## FOURTH YEAR BACHELOR OF ARCHITECTURE



**DIVISION- A**



**DIVISION-B**

# CLASS PHOTOGRAPHS

## FOURTH YEAR BACHELOR OF ARCHITECTURE



**DIVISION- C**



**DIVISION-D**

# CLASS PHOTOGRAPHS

## FIFTH YEAR BACHELOR OF ARCHITECTURE



**DIVISION- A**



**DIVISION-B**

## CLASS PHOTOGRAPHS

### FIFTH YEAR BACHELOR OF ARCHITECTURE



**DIVISION- C**



**DIVISION-D**

# CLASS PHOTOGRAPHS

## M. ARCH. (ARCHITECTURAL CONSERVATION)



## M. ARCH. (COMPUTER APPLICATIONS)



**LIBRARY STAFF**



**NON-TEACHING STAFF**



**Students Council for SPPU  
2018-19**

## STUDENT COMMITTEES



<b>Susamvad 2019</b>			
	<b>Portfolio</b>	<b>Main coordinator (3<sup>rd</sup> Year B. Arch)</b>	<b>Designee Coordinator (2<sup>nd</sup> Year B. Arch)</b>
<b>1</b>	<b>Susamvad (GS)</b>	Abhishek Jain	Gajanan Bhamare
<b>2</b>	<b>Treasurer</b>	Ajinkyaraj Ghodnadikar	Vipul rathod
<b>3</b>	<b>Cultural</b>	Eesha Shendkar	Manas Ghule
<b>4</b>	<b>Exhibition</b>	Samrudhhi Dharmadhikari	Shreesha Bidkar
<b>5</b>	<b>Sports</b>	Nishank Chowatia	Tejas Kale
<b>6</b>	<b>Seminar</b>	Anushree Varze	Vaishnavi Bhimapalli
<b>7</b>	<b>Workshop</b>	Kinjal Bhojani	Aishwarya Awchar
<b>8</b>	<b>Mural</b>	Vivek Ajmire	Vaidehi Dangore
<b>9</b>	<b>Wall Magazine</b>	Rashmin Kale	Omkar Jagtap
<b>10</b>	<b>Photography</b>	Adarsh Dashpute	Saish Dhimate
<b>11</b>	<b>Library</b>	Rachita Shinde	Shantanu Barolia
<b>12</b>	<b>Ladies Representative</b>	Ruchika Salunkhe	Sonal Chavan
<b>13</b>	<b>NASA</b>	Nalin Jain (U Sec)	Suraj Jangid (UD)



**Faculty  
Coordinators**



Ar. Mukta Pandit  
Assistant Professor



Ar. Shreya Shirsat  
Assistant Professor

**Student  
Coordinators**



Rashmin Kale  
Third year B. Arch  
Student Editor



Madhura Hanchate  
Third year B. Arch



Omkar Jagtap  
Second Year B. Arch

# Abhivyakti 2018-19

*“Architecture should speak of its time and place but yearn for timelessness.”*

Frank Gehry



**SINHGAD COLLEGE OF ARCHITECTURE**

**44/1 Off Sinhgad Road**

**Vadgaon (Bk)**

**Pune 411041**

**Tel: 020-24100000/24351439**

**Email id: [scoa@sinhgad.edu](mailto:scoa@sinhgad.edu)**

## OUR VISION

*"create an milieu for crafting sensible & responsible architects for the society"*



## OUR MISION

*committed to offer a conducive academic environment*

*to*

*LEARN, DEMONSTRATE & PROGRESS*

*for*

*both students and teachers*

## CONTENTS

- **SCOA**
- **ACADEMIC WORKS**
- **CO & EXTRA-CURRICULAR**
- **EVENTS**
- **PHOTOGRAPHS**

## OUR OBJECTIVES

*to provide all-round development & excellence in curricular program, co-curricular activities & extra-curricular activities*



