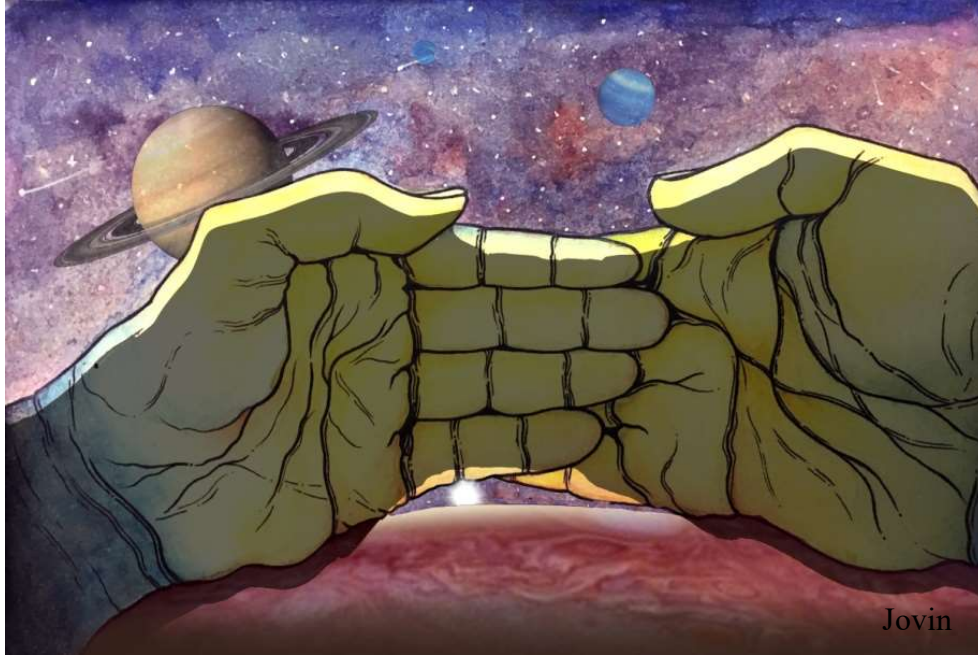


अभिरुचि



Sinhgad Institutes

The Annual Magazine

2017-18

Recognized by the Government of Maharashtra

Approved by the Council of Architecture

Affiliated to the Savitribai Phule Pune University, Pune

(ID No. PU/PN/Engg/1512000)

**SINHGAD TECHNICAL EDUCATION SOCIETY'S
SINHGAD COLLEGE OF ARCHITECTURE,
PUNE**



FOUNDER PRESIDENT'S MESSAGE

Prof. M. N. Navale

Founder President, Sinhgad Institutes

“We ensure that these young minds find the right knowledge and the right atmosphere to dream and the right preparation to achieve their dreams.”

Two decades ago, with the winds of change blowing through the Indian economic landscape, we had a dream. We realized that the coming century would throw up unfamiliar challenges, the kind that mankind has not seen yet and the pace of change will be unsettling. Our dream therefore was to build an institution that will equip the youth to be able to compete in a scenario where change could be called the only constant.

From this dream arose Sinhgad Institutes. From a humble start, our family is now 70,000 plus and growing. But there is one way in which we have not changed and that is in our uncompromising stand on quality of education and its applicability in life. We have always worked towards creating thought leaders and frowned upon rote learning. This is evident in the quality of students that come out of our institutes and their successful trajectory in life.

At our campuses, we see young minds reinventing the future in more ways that we can imagine. The pace of change is only accelerating and this means that these young minds will find many ways to influence the future and better the lives of millions atmosphere to dream and the right preparation to achieve their dreams.

Come join us in our march towards light.



FOUNDER SECRETARY'S MESSAGE

Dr. Sunanda M. Navale

Founder Secretary, Sinhgad Institutes

"We see a potential leader in every student. We treat every mind with the respect that is deserving of one who is to achieve greatness."

The world is fast converting to a knowledge economy where the only wealth is agile and able to adapt to changing scenarios. Now, it is not just enough to complete individual. We at Sinhgad Institutes have always believed in the complete development of an individual. We see a potential leader in every student. We treat every mind with the respect that is deserving of one who is to achieve greatness.

Our emphasis on students getting involved in sports and other extra-curricular activities lay the foundation of an individual who is academically keen and able.

Peter Drucker had once famously said, 'The best way to predict the future is to create it.'



Mr. Rohit M. Navale

Vice President (HR), Sinhgad Institutes

"Our emphasis on honesty, fair play and integrity go a long way in ensuring the success of our alumni when they go out into the world."



Mrs. Rachana Navale Ashtekar

Vice President (Admin), Sinhgad Institutes

"Our faculty is the engine that helps the institute running with ceaseless efforts and constant innovation."

OUR VISION

"create an milieu for crafting sensible & responsible architects for the society"

OUR MISION

*committed to offer a conducive academic environment
to
LEARN, DEMONSTRATE & PROGRESS
for
both students and teachers*

OUR OBJECTIVES

*to provide all-round development & excellence in
curricular program, co-curricular activities & extra-curricular activities*



FROM PRINCIPAL'S DESK

Dr. Banani Banerjee
Principal, SCOA

“Shelter” the primary need of mankind always undergoes infinite creative approaches and experiments. The growing and changing demands of the society is marking new horizon in the human space. As a result, the scope in the field of architecture is setting new paradigms.

We, at SCOA provide all facilities and pay full attention to mould the students as sensitive, creative, practical, dutiful and ethical architects to serve the society. Competent faculty, state-of-the-art infrastructural facilities are provided to full-fill our aim.

We are happy to publish annual magazine Abhivyakti where our students and faculty contributed enthusiastically with a conviction of continuing the tradition started at the inception of our college.

Student Editor

1. Abhijeet Dhumal III – B

Team Members

1. Darshan Kanter II-B
2. Chinmay Nisal II-C
3. Lakhan Chahchane I-A
4. Omkar Dandawate I-A

Faculty Coordinator

Ar. Ninad Jog

FROM EDITOR,
Abhijit Dhumal, B. Arch. II-B

The students of SCOA take the pride of continuing the tradition of publishing annual magazine Abhivyakti this year. Entire process from collection of contents, editing, composition and printing gave us the opportunity to work in collaboration, intellectual enhancement and most importantly to add a milestone in the progress of college.

We are grateful to faculty and management for extending their support and guidance.



ANNUAL EXHIBITION



CONTENTS

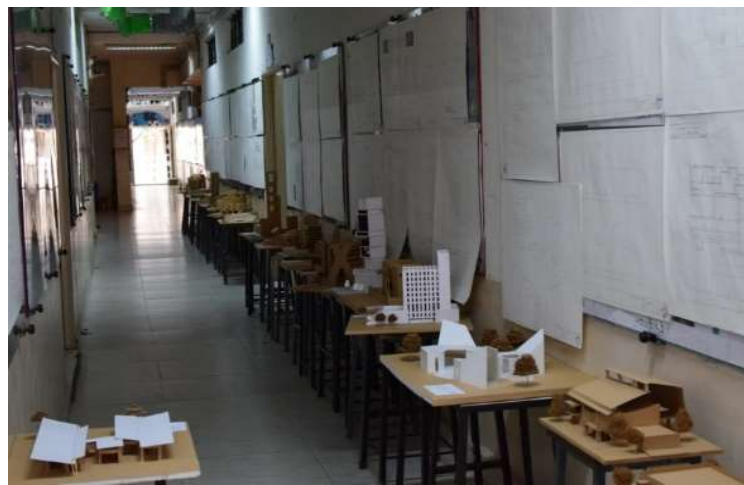
- STES
- SCOA
- ACADEMIC WORKS
- CO-CURRICULAR
- EXTRA-CURRICULAR
- SILVER JUBILEE EVENTS
- PHOTOGRAPHS

Sinhgad College Of Architecture. Pune.

“Architecture is the will of an epoch translated into space.”

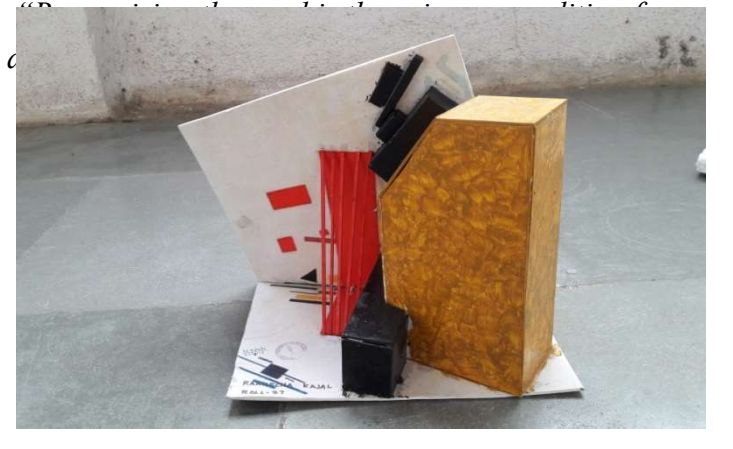
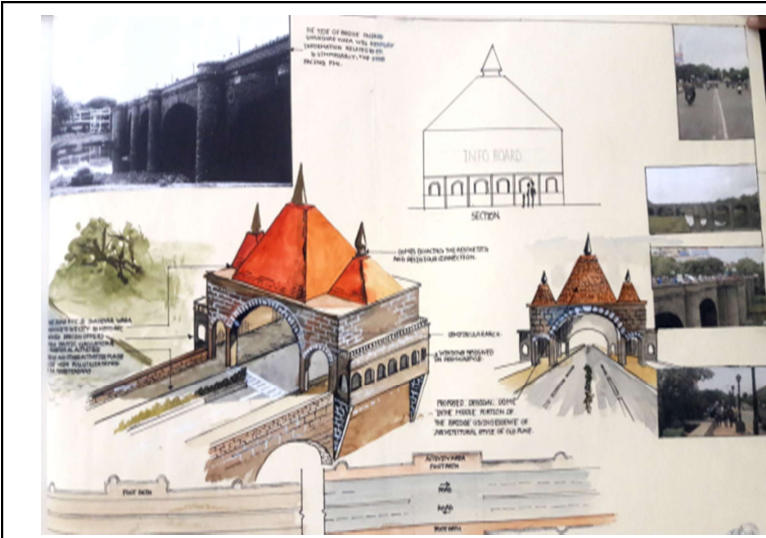
Mies van der Rohe

FIRST YEAR B. ARCH.



“Recognizing the need is the primary condition for design.”
Charles Eames

SECOND YEAR B. ARCH.



A joint studio of second year B. Arch.

**Sinhgad College of Architecture, Pune & S.V.S.College of Architecture ,Coimbatore
'BRIDGE THE GAP BETWEEN OLD AND NEW'.**

Faculty of SCOA : Ar.Shilpa Kshirsagar , Dr. Avanti Bambawale , Ar. Ninad Jog, Ar. Kirti Pawar, Ar.Mughada Kulkarni

Overall coordination : Ar. Trishna Mahadkar.

Pune is the second largest city in the Indian state of Maharashtra and the ninth most populous city in the country. Situated 560 metres (1,837 feet) above sea level on the Deccan plateau on the right bank of the Mutha river, is the administrative headquarters of Pune district and was once the centre of power of the Maratha Empire established by Shivaji Maharaj. In the 18th century, Pune was the political centre of the Indian subcontinent, as the seat of the Peshwas who were the prime ministers of the Maratha Empire.

Today the city has grown and continues to grow rapidly in all directions, with the newer developments across the river. However this rapid change has also brought about a generic character to the city. With the river offering the largest continuous open space at the city level, the bridges across the rivers bring about an opportunity to literally **'BRIDGE THE GAP BETWEEN OLD AND NEW'**.

A joint studio was conducted with the second year B. Arch. students and faculty of Architectural Design of two colleges at SCOA for two-day long session on 26th & 27th July 2017. Students of second year and faculty of S.V.S.College of Architecture ,Coimbatore **joined in the studio with the aim of collaborative experimentation.**

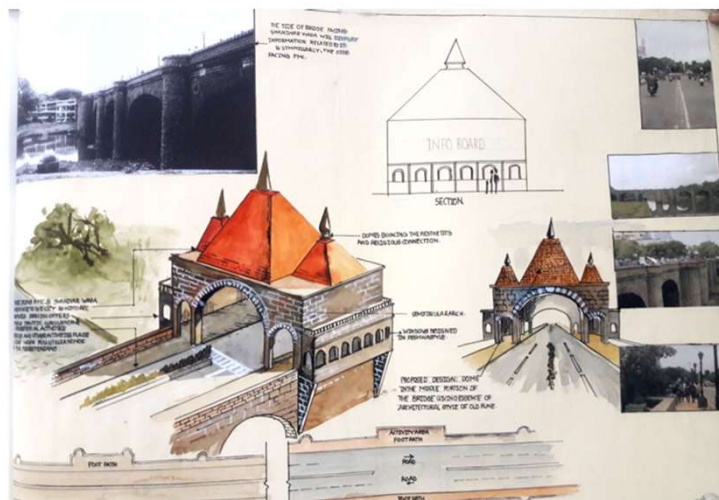
Four existing bridges over Mutha river in Pune were selected as

- S.M.Joshi Bridge
- Kakasaheb Gadgil *Bridge - Z Bridge*
- Shivaji Bridge
- Sambhaji Bridge

**A joint studio of second year B. Arch.
Sinhgad College of Architecture, Pune & S.V.S.College of Architecture ,Coimbatore**

Design requirements

Students formed groups of four members, two from each college, and each group studied one of the four bridges. On the first day, students surveyed the bridge and two areas connected by the bridge. Keeping in mind the original context and today's user along with his/her needs, redesign the connection from old to new. The students mapped and analysed the present use and physical conditions and made a proposal for making better quality space. Plan, sections, photographs, sketches were made by each group and presented their findings.



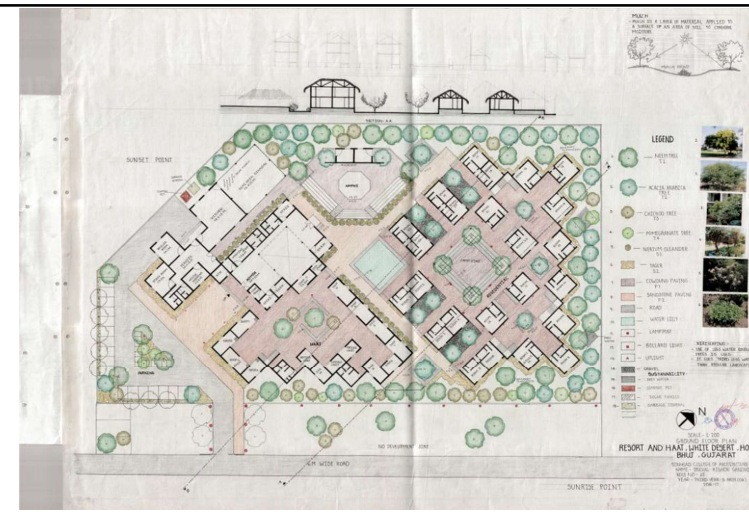
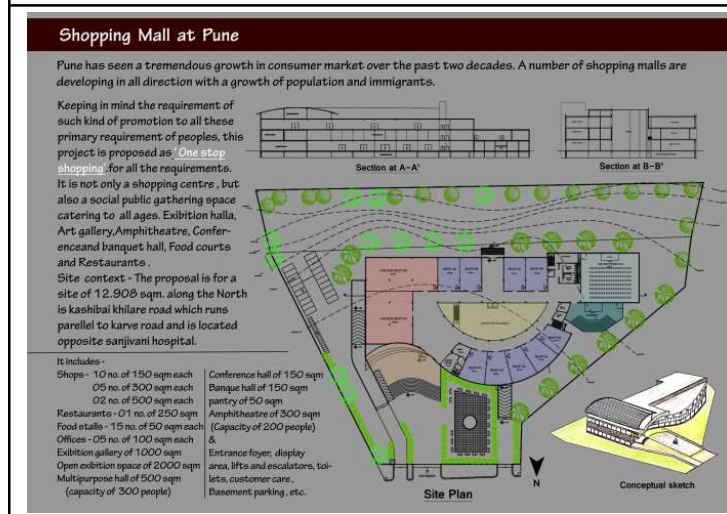
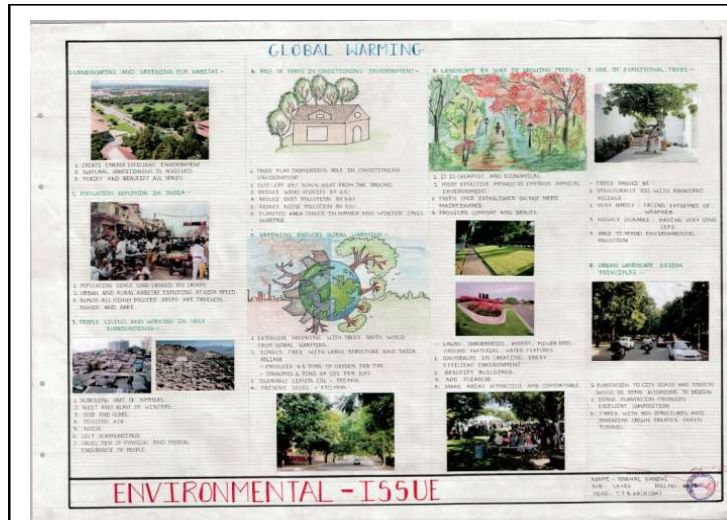
JOINT STUDIO- OLD TO NEW – DESIGNING OVER
SHIVAJI BRIDGE



“Architecture begins where engineering ends.”

Walter Gropius

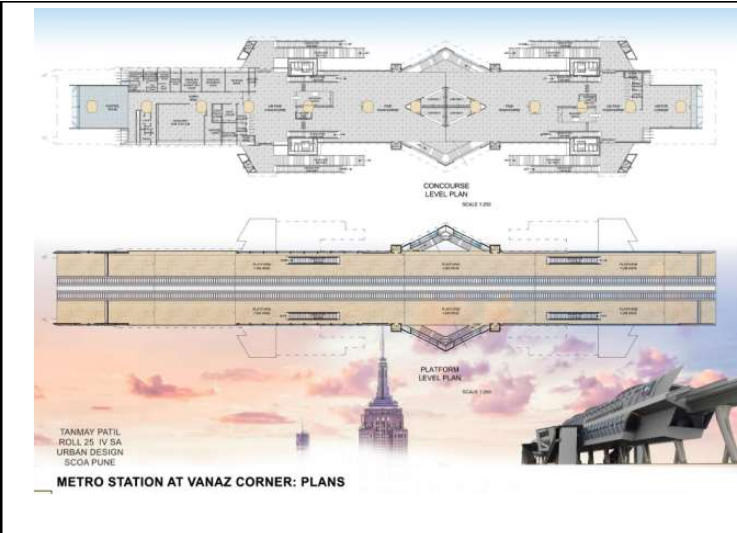
THIRD YEAR B. ARCH.



“No architecture can be truly noble which is not imperfect.”

John Ruskin

FOURTH YEAR B. ARCH.



Housing at Pimple Saudagar (PCMC)

The activity like Club House, Swimming Pool, Amphitheatre, Play Area, Party Lawn, etc. are designed in center of the site, by the purpose of attract to peoples and to create a create focal point.

The building is placed in such a direction to fulfill the light, ventilation, wind with wonderful atmosphere, and to avoid complexity.

No.	Type of Housing	% of BUA	Built-up area of units	No. of units
1.	1BHK - MHADA	20	50 sqm	65
2.	2BHK	50	75 sqm	88
3.	3BHK	40	100 sqm	52
4.	Pent-house	10	120 sqm	10
	Total	100		
5.	TDR	10	154 sqm	8

3 BHK Floor Plan

In the Design, I have created an alternate corners, for the purpose of Aesthetics. That alternate corners and extended part, that space is used as balcony for 'Master bedroom'. From the bottom, its create an amazing view of 'Alternate corners'.

1 BHK Floor Plan 2 BHK Floor Plan Exterior view of 3BHK Building

Corner view from bottom Front view from bottom Attractive design of window railing

PUNE

- CULTURAL CAPITAL
- RICH HISTORY
- FAMOUS FOR ITS NIGHT LIFE
- ONE OF THE FINEST CITIES TO LIVE.

DECCAN

- EDUCATIONAL HUB
- HEART OF CITY
- COMPRISES OF JM ROAD, FC ROAD, LAW COLLEGE ROAD, SENAPATI BAPAT ROAD.
- PMC AND PSE IS LOCATED IN DECCAN
- HAVING THE MOST NUMBER OF RESTAURANTS
- JANGLI MAHARAJ ROAD HAS THE FAMOUS ROCK PATALESHWAR CAVES.
- THIS AREA IS ALWAYS BUSTLING WITH ACTIVITY DUE TO THE COLLEGE CROWD, GIVING IT A VERY YOUNG AND LIVELY FEEL

CONNECTIVITY

- TWO OF THE BIG BUS STANDS, DECCAN GYMKHANA AND CORPORATION BUS STANDS.
- METRO STATION.
- AUTO RIKSHAW STANDS.

CLIMATIC ANALYSIS

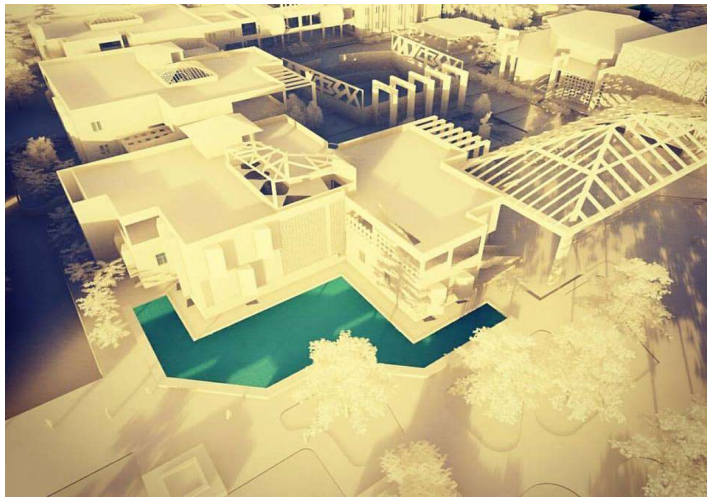


Sinhgad College Of Architecture. Pune.

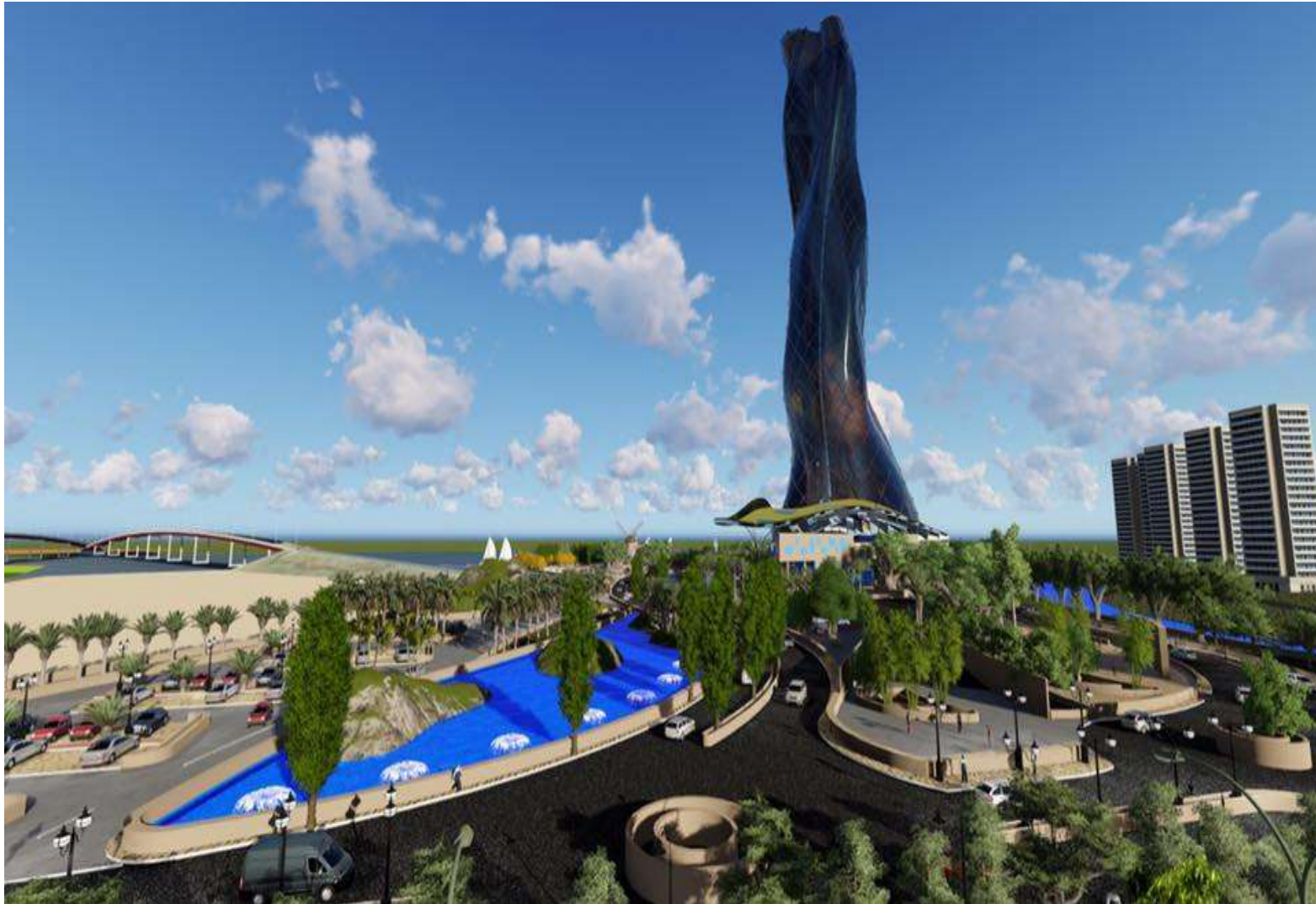
“An idea is salvation by imagination.”

Frank Lloyd Wright

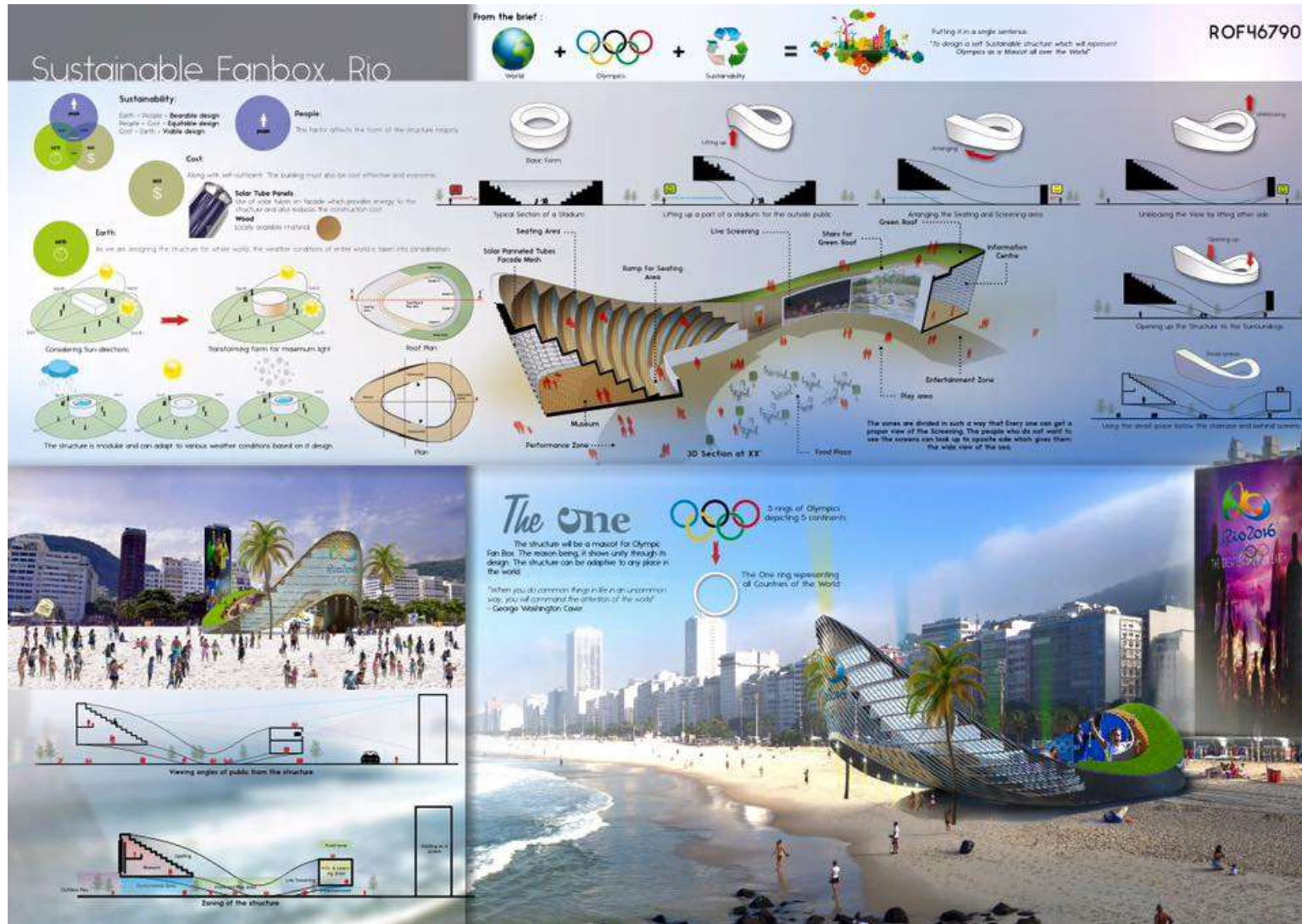
FIFTH YEAR B. ARCH



Thesis On Sky Scrapers By Himangi Mutha. Final Y. B. Arch.



Design Competition Participation By Rushikesh Kothari, Abhijit Bhogade, Akshay Gawade.



"The problem with digital architecture is that an algorithm can produce endless variations, so an architect has many choices." - Peter Eisenman

M. ARCH. (COMPUTER APPLICATIONS)

SITE ANALYSIS SITE - Ozarde water fall

MAJOR TOURISM IN VICINITY OF KOYANAGAR

CAMPING
ANIMAL SAFARIES
BIRDS WATCHING
PHOTOGRAPHY

POD area was selected near Ozarde waterfall.

Birds migrats near water and Animals come their to drink water, so tourist are found for bird watching and Photography near Koyna river.

Camping
Animal Safari
Birds watching
Photography

Away from river, inside the forest, in buffer zone, various animal species - so mosly Tourist go their for Animal Safari and Camping

POD

Pod is a affordable range tiny house occupies minimum circulation area and usable area. It is generally used for Relaxing and planned to keep very less and only required space for Dwelling.

Standrad POD Area

As per standard minimum POD size should be:
Single person- 1.2m X 1.5 m = 1.8 sq.m
Two person- 1.5m X 2.5 m = 3.75 sq.m
Height - 1.5 m

Basic Rules for construction of POD in forest

Conservation
• Tourism is feeding the people who are empowered to protect the animals from poachers.
• Don't cut down trees, build it into design

Community
• The community builds & create a hospitality. Care to be take, Urbanisation should not over power natural beauty.

Design Intent for POD As Per Brief

- Tourist POD would be For Single occupancy or Double occupancy.
- POD can be Individuals or clubed Together in clusters or 5-7 depending on Site Context.

My Consideration

- PODs will be placed on levels
- No obstruction of View
- Each POD will get its Private Area
- Under the Tree to hide in its foliage

POD

Different Types Of PODS

Basic Rules for construction of POD in forest

Conservation
• Tourism is feeding the people who are empowered to protect the animals from poachers.
• Don't cut down trees, build it into design

Community
• The community builds & create a hospitality. Care to be take, Urbanisation should not over power natural beauty.

Design Intent for POD As Per Brief

- Tourist POD would be For Single occupancy or Double occupancy.
- POD can be Individuals or clubed Together in clusters or 5-7 depending on Site Context.

My Consideration

- PODs will be placed on levels
- No obstruction of View
- Each POD will get its Private Area
- Under the Tree to hide in its foliage

SITE

12 m wide road
Lowest pt. - near road
Highest pt. of waterfall
30 m waterfall base
Lowest pt. 0.00m

LOCATION

Site selected contains:

- Various huge trees, Big stones.
- A subdivided pathway connecting main 1.5 m pathway reaching highest point of ozarde waterfall.
- Different angles of view points.

View pt : - Ozarde waterfall in front and remaining sides Dense Forest

SITE SELECTION CRITERIA FOR POD

- Above tree to hide in its foliage
- Near stones to merge with the landscape

Area selected for POD plays very important role in getting view points and Axis points from the site. Care is taken to preserve the natural Flora of forest

SITE SECTION

9.0m
6.0m
3.0m
0.00m

SITE SECTION

9.0m
6.0m
3.0m
0.00m

PODS should be placed on different levels to avoid obstruction of view

TOURIST POD AT KOYANAGAR

AR. PRIYANKA CHAVAN | SCOA | SEM - I (2017-18) | M. ARCH | COMPUTER APPLICATION | 2

M. Arch. (Computer Application) - Digital Fabrication by students of F. Y. 2017-18

The perception of human behaviour patterns and posters in transitional spaces are represented through sculptural art of illusion.

This perception depends upon individual perspective.

The sculptural art creates varied perceptions and impression of human and renders special perpetual experiences of human behaviour through illusion...

First Y. M. Arch. (C.A.) 2017-18

pravah

Some say "all is illusion" while other say "its only a perception"

design evolution

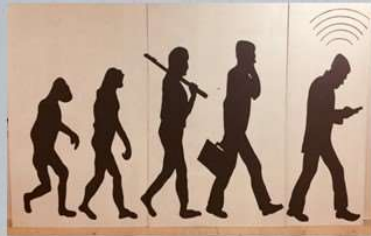


FINAL PRODUCT

STAGE-1 CONCEPT



Transitional behaviour of people

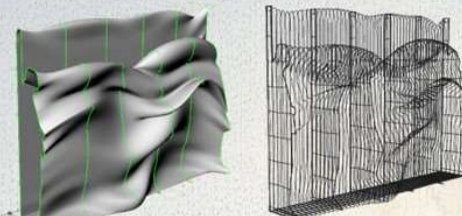
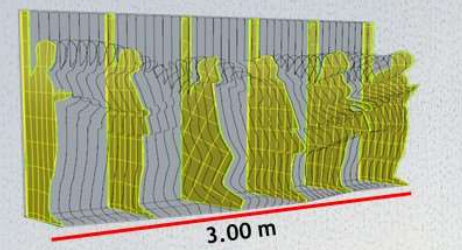
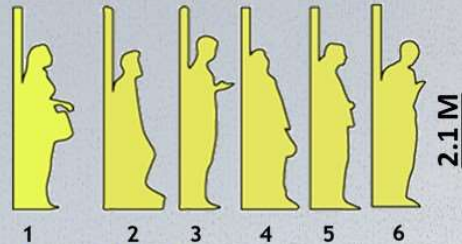


Transformation of humans



Transition + transformation

STAGE-2 DESIGN

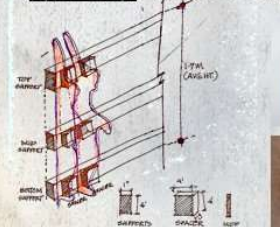


6 main and 36 intermediate profiles.

STAGE-3 MAKING



STAGE-4 INSTALATION



Joinery Detail



POD Design by Ar. Lovjit Singh Saini. F. Y. M. Arch. 2017

POD PLAN

Sitout exit flap, pod entry flap and sky light are all made up of 2 layers of materials. (opaque) Nylon on outer side for privacy. (semi transparent) Mosquito netting mesh fabric for allowing light and air inside while blocking insects.

Sky light cut out on each pod has been designed in such a way, so that every pod has a view of Ozarde waterfall without risking privacy.

Chajja like detail at entrance to stop rain water from entering the pod.

POD SECTION

VIEW-ENTRANCE

VIEW-PLAN

VIEW-FRONT

VIEW-ENTRANCE DETAIL

VIEW-SIDE

POD PLAN DETAILS

SITE PLAN

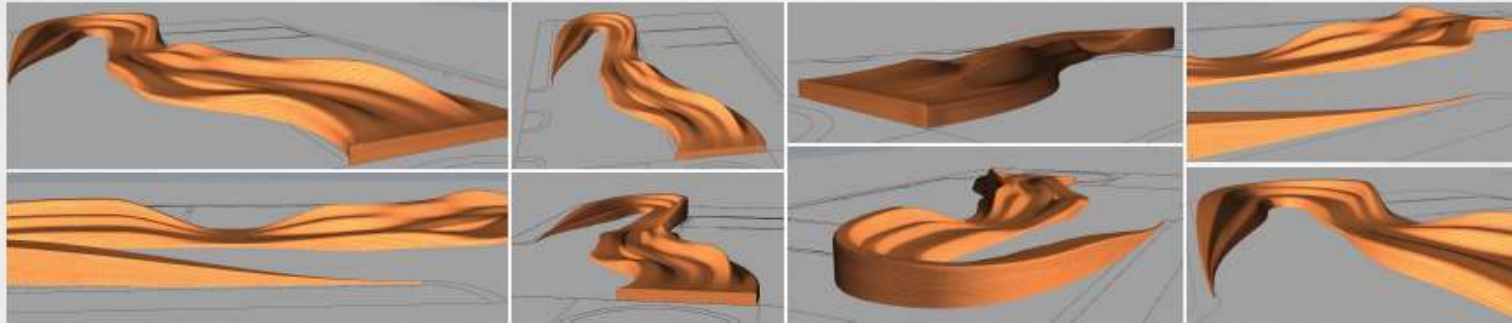
POD SECTION

Architectural drawings for the POD design. The drawings include a Pod Plan showing five pods with labels for Sitout, Store Room, Entry, and Exit. A Pod Plan Details view shows the layered construction of the pods. Pod Section drawings show the internal structure and elevation levels (+0.0, +1.0). The Site Plan shows the location of the pods on a hillside. Various views (Entrance, Front, Entrance Detail, Side) show the pods in a natural setting with a waterfall in the background.

KOYNA WILDLIFE SANCTUARY - POD DESIGN

LOVJIT SINGH SAINI
SCOA, FY M. ARCH 2017-18
DIGITAL DESIGN STUDIO

3D VISUALIZATION



PARAMETRIC FURNITURE DESIGN | DESIGN 1 | SCOA
LOVJIT SAINI | VATSALA SUTAR | KUNAL NAGARKAR

JEJURI : NATURAL SETTING AND CONTEXT

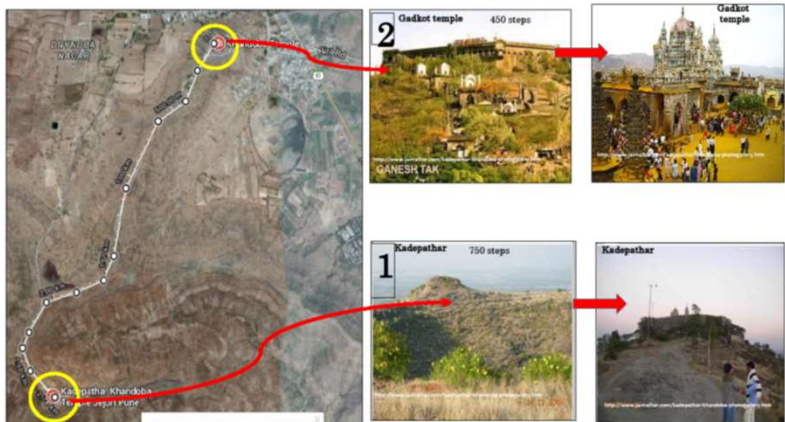
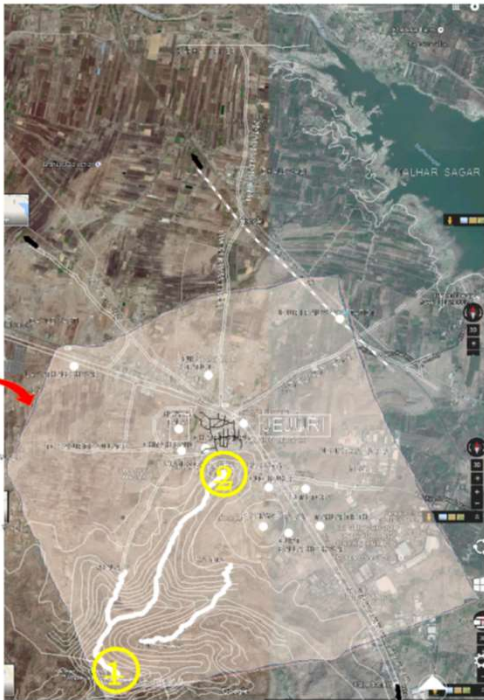
KHANDOBA, AT JEJURI : 'Kuldevat of Maharashtra'



Location : Jejuri is located at 18.28°N 74.17°E. It has an average elevation of 718 metres (2355 feet).



Jejuri is located at 48 kms from pune, near saswad , on Pune Pandharpur road.



There are two Khandoba temples: the first is an ancient temple known as **Kadepathar** which has 750 steps to climb up. It is difficult to climb. The second is known as **Gadkot Temple**, which has stone steps to climb. This temple has about 450 steps, 18 Kamani (arches) and 350 Dipmalas (lamp-pillars). Both temples are fort-like

It is the medieval temple located on a hillock. There are 200 stone steps leading to the temple passing through toranas (huge doorway arches). The steps are lined with a number (300) of stone deepmalas (lamp stands) on either sides. The main doorway has a nagarkhana superimposed over it.



The main temple itself is within a stone fortification (gadkot). It is said that Jejuri used to be a fort in the medieval times. This was the place where Shahajiraje met his son Ch.Shivaji raje after a long period of separation (sometime around 1662 AD). The fortification is in form of an arcade passageway with a parapet covering the perimeter of the temple premise.



Outside the main temple one comes across a minor temple of the demon turned demi god, Mani and also four huge deepmalas line up.



Khandoba's iconography is a dog. It is said that when Khandoba slew the demon, a pack of dogs who assisted the lords forces jumped in glee abandon over the corpses of the demons. Hence alongside the statues of the Gods there is also an idol of the dog.



Outside the main doorway one sees a majestic statue of a sharabha that is so revered in the Khandoba (Shiva) temples as the Lords incarnation and another figurine of an elephant.



SAFEGUARDING THE CULTURAL LANDSCAPE OF KHANDOBA

<p>SCALE -</p>	SHREYAS AMRASKAR GAUR JOSHI CHHATRASAL PANDAY TEJAS PANIKAR	SHELEA INGAVALE, MEENKA KULKARNI POORVA PATIL SHUBHASHRIGU.	FACULTY - DR. M. V. TELANG AR. VAISHALI LATAKAR, AR. ARCHANA DESHMURKH	SIGN
	DRAWN BY -		B. Y. M. ARCH ARCHITECTURAL CONSERVATION	SHEET NO -

BUILDING TYPOLOGIES

- RESIDENTIAL BUILDINGS, BUNGALOWS AND VILLAS
- RELIGIOUS BUILDING, CHURCHES
- PUBLIC BUILDINGS, SCHOOLS, HOSPITALS
- TOWN HALL, MARKET PLACE
- ADMINISTRATIVE BUILDINGS, COURT BUILDINGS, GENERAL POST OFFICE
- RECREATIONAL BUILDING, CINEMA HALL, CLUB HOUSE
- OTHER BUILDINGS, RAILWAY STATION AND TRANSPORT SYSTEM

DESIGN-PLANNING

TWO GATES WITH A CIRCULAR DRIVEWAY

DETACHED KITCHENS, OFFICE BUILDINGS, GARAGES, SERVANTS' QUARTERS

GARDENS WHICH HAD A FOUNTAIN IN ITS CENTER, DRIVEWAY LOOPING AROUND THE LARGE FRONT GARDENS

SITE PLAN : SHOWS ALL THESE CHARACTERS GREATLY INFLUENCED BY BRITISH COLONIAL PERIOD

GARDEN DESIGN

MAIN FEATURES

- TOPIARY GARDEN
- FOUNTAINS
- PATHWAYS
- FLOWERING SHRUBS

SHOWS ALL THESE CHARACTERS GREATLY INFLUENCED BY ITALIAN GARDEN

MAIN BUILDING PLAN

BUILT AS A SOLID BLOCK WITH ADDED ORTICOS & VERANDAHAS

- SUBSTANTIAL IN SIZE, SYMMETRICAL
- SEVERAL SETS OF ENTRY STEPS
- MAIN ENTRANCE HAS THE WIDEST SETS OF STEPS

CLASSICAL COLUMNED VERANDHAS ALL AROUND

- IMPOSING
- FREE STANDING
- DEVOID OF COURTYARD
- MULTIPLE STORIED
- ADDITION OF FLANGES
- ARRIVAL PORTICO
- CLIMATE RESPONSIVE

STRUCTURAL COMPONENTS & MATERIALS

- PLINTH**
 - MODERATE/HIGH PLINTH
 - STONE PLINTH WITH EXPOSED SQUARED RUBBLE REGULAR COURSED MASONRY PROJECTIONS AT CERTAIN LEVELS.
- WALLS**
 - BRICKS WITH SMOOTH FINISH OF LIME PLASTER 680 MM THICK TO & 4.8M. HIGH COVERED WITH LIME PLASTER.
 - OUTER SURFACES OF WALLS WITH EXPOSED STONE AT SOME PLACES.
 - PAINTED PRIMARILY IN WHITE PAINT.
 - BRICK CORNICE BAND WITH LIME PLASTER ON WALLS AT CILL LEVEL OF THE UPPERLEVEL WINDOWS.
- CEILING AND CEILING TREATMENT:**
 - THE WOODEN CEILING HAD LONG PLANKS AND SOLID WOODEN LOGS TO BEAR THE LOAD OF THE ROOF.
 - PAINT IS USED FOR THE CEILING AS A FINISH.
 - WOOD CEILING WITH MOULDINGS TO ENHANCE THE CEILING.
- ROOFING SYSTEM :**
 - LOW-PITCHED, ROOF WITH HIGHLY DECORATIVE GABLE WALLS SUPPORTED BY WOODEN TRUSS & COVERED WITH CLAY TILES
- FLOORS AND FLOOR TREATMENT:**
 - WOODEN FLOORING WITH POLISHING.
- FLOORING/TILE WORK.**
 - FLOOR DESIGN MADE WITH DIAMOND SHAPED CUT WHITE MARBLE AGAINST BLACK COLORED GRANITE
 - STYLIZED DESIGN CAN BE SEEN WITH SURROUNDING BORDERS

DECORATIVE COMPONENTS

- FAÇADE**
 - LIME STUCCO WORK
 - DECORATIVE BANDS WIT FLORAL MOTIFS.
- COLUMNS & ARCHES**
 - SEMICIRCULAR ARCHES SUPPORTED ON COLUMNS WITH CORINTHIAN STYLE CAPITAL AT GROUND LEVEL & DORIC WITH LOOP DESIGN AT UPPER FLOORS.
- WROUGHT IRONED, RAILING**
- NICELY DETAILED BALUSTERS ARE USED FOR STAIR**

ARCHITECTURAL STYLE

COMPREHENSIVE CONSERVATION PROPOSAL FOR AGA KHAN PALACE PRECINCT, PUNE

SCALE: 1:100 @A1

INFERENCE

- SITE LEVEL**
 - NEATLY LAID OUT PLOTS
 - SHIELDED BY FLOWERING HEDGES & BY FENCES.
 - FOREGROUND CONCEPT
- STRUCTURAL COMPONENTS**
 - FOR STRUCTURAL STABILITY BUILT AS A SOLID MASONRY STRUCTURE IN LIME PLASTER
 - WOODEN ROOF TRUSSES
 - COLUMNS WITH SEMICIRCULAR ARCHES
- MATERIAL**
 - STONE PLINTHS WITH LIME PLASTERED BRICK AND STONE WALLS WITH LIME MORTAR
 - WOOD FOR ROOFING SYSTEM, DOORS, WINDOWS, VENTILATORS
- DECORATIVE COMPONENTS**
 - STUCCO WORK WITH LIME
 - BALUSTRADES
- BUILDING LEVEL**
 - DEPARTURE FROM VERNACULAR BUILDING
 - REFLECTION OF THE SUPERIOR POSITION OF OWNER
 - SUBSTANTIAL IN SIZE, MORE PRETENTIOUS, A FREE STANDING, COURTYARDLESS OUTWARD FACING MULTIPLE STORIED
 - SELF CONTAINED UNIT
 - SPACIOUS AND SYMMETRICAL WITH COLORWASHED VERANDHAS
 - FEATURES USED HERE ARE BORROWED FROM INDIAN BRITISH COLONIAL STYLE WHILE IN GARDEN DESIGNING WE FOUND THE ELEMENTS FROM ITALIAN AND ENGLISH GARDEN STYLE.
 - INFLUENCE OF RAJASTHANI CARVINGS SO WE CAN SAY THAT IT IS A HYBRID STYLE ALL TOGETHER, BUT PROMINANTLY INDIAN BRITISH COLONIAL STYLE

SINHGAD COLLEGE OF ARCHITECTURE, PUNE
DEPARTMENT OF ARCHITECTURAL CONSERVATION

PRINCIPAL	FACULTY	FIRST YEAR MARCH (ARCHITECTURAL CONSERVATION)	DRAWN BY
DR. BANANI BANERJEE	DR. VAISHALI LTKAR AR.SONAL KARANJIKAR	KETAKI BADGE, MEGHA BUTTE, CHAITRALI DESHPANDE JANHAVI DHAGE, JAYANTI GALAGALL, GANESH GODSE	MEGHA BUTTE
SEM - I	AR.SOURABH MARATHE AR.KOMAL POTDAR	SHIFA KHAN, RUTURAJ KULKARNI, MANISH MORE, TRUPTI NAIK SHREYAS PARANJAPE, SAMIKSHA PATIL, YOGITA PUROHIT	
2017-2018			

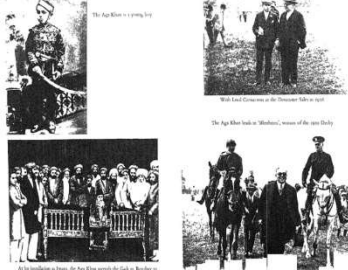
SIGN/STAMP

Who was Sir Sultan Muhammad Shah Aga Khan III ?

1. Early Life
 • He was born in Karachi, in British India (now Pakistan), to Aga Khan II and his third wife, Nawab A'lia Shamsul-Muluk, who was a granddaughter of Fath Ali Shah of Persia (Gajar dynasty).
 • Under the care of his mother, he received both the religious and eastern education which his position as the spiritual leader of the Ismailis made indispensable and a sound European training.
 • The latter had been denied to his father and his paternal grandfather.
 • This blending of the two systems of education proved to be very appropriate, as he led his community through times of change, including the end of British rule in India and the establishment of the state of Pakistan as a Muslim homeland. He also attended Eton and Cambridge university.

• He was one of the founders and the first president of the All-India Muslim League, and served as President of the League of Nations from 1937-38.
 • He is considered to be a founding father of Pakistan. Stressing the need for a progressive interpretation of Islam, he stressed its compassion, respect for human dignity and tolerance and did much to situate his community within the Muslim mainstream.
 • His sons and grandson have continued a tradition of service to the international community through involvement in the United Nations, through diplomacy and through initiatives funded by the Imamate. His own life bridged the colonial period and the post-colonial period in India, where he spent much of his life.
 • He successfully led his community during both eras, helping it adapt to changing circumstances. On the one hand, he was considered to be a celebrity.
 • Owning racing horses, he moved comfortably in the company of royalty and the wealthy.
 • On the other hand, he was respected for his knowledge of Islam, for his philanthropy and for his commitment to human dignity.

Race Horse Owner
 He was an owner of thoroughbred racing horses, including a record equalling five winners of the Epsom Derby, and a total of sixteen winners of British Classic Races. He was British flat racing Champion Owner thirteen times.



Glimpses of some events in life of Aga Khan III



Why Aga Khan Palace Was Built ?

• Aga Khan Palace was built in 1892 by Sir Sultan Muhammad Shah Aga Khan III.
 • It was constructed intended to be a source of employment for the famine-struck villagers in the surrounding areas.
 • It took about 5 years to complete the work and one thousand people were employed and the were given full hearted wages for their livelihood and 12 lakhs was the cost.
 • In the year 1969 Prince Karim El Husseini Aga Khan IV came to India and donated this palace with surrounding land to the government of India Gandhi Smarak Nidhi, New Delhi.



Before Independence



Today - Aga Khan Palace

The sprawling palace complex is located on Ahmednagar road and is a spectacular building with vast open space in the front. It was built in the Italian style – with arches and spacious lawns – though it was also influenced by Islamic architecture.



Aga Khan Palace And Surrounding Today

While the majestic building and the palace grounds attract a lot of visitors every day, the Aga Khan Palace seems to have been overshadowed by new developments occurring on Nagar road, one of the most happening places in Pune. Several office towers, residential colonies, shopping malls, star hotels and other new buildings have come up along the road



Architectural Style And Characteristics

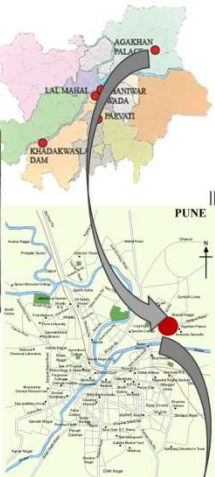
• Aga Khan Palace Has Italian Arches And Spacious Lawns.
 • The Building Comprises Five Halls. It Covers An Area Of 19 Acres (77,000 M²), Out Of Which 7 Acres (28,000 M²) Is The Built Up Area.
 • The Palace Captivates The Eye Of A Spectator With Its Magnificence And Picturesque Architecture.
 • The Area Of The Ground Floor Is 1756 M². That Of The First Floor Is 1080 M², Whereas The Second Floor Has A Construction Of 445 M².
 • The Specialty Of This Structure Is Its Corridor Of 2.5 Meters Around The Entire Building.

Aga Khan Palace Today-

• Today, The Palace Serves As The Headquarters Of The Gandhi National Memorial Society And Features Several Exhibits, Including The Personal Belongings Of The Mahatma.
 • The Aga Khan Palace, Which Is Also A Museum, Archives Several Photographs And Portraits Relating To Gandhi And Major Leaders Of The Freedom Movement. Some Of The Rooms, Especially Those Occupied By Gandhi, Are Out Of Bound For Visitors Who Can, However, See It From Outside.
 • Though Gandhi Was Detained At The Palace For Less Than Two Years, It Had A Major Role During The Crucial Period Leading To Independence. In Fact, When The Late Filmmaker Richard Attenborough Decided To Make His Film Gandhi, He Shot Large Portions Of It At The Aga Khan Palace.



• Nagar road, which was formerly a narrow, two-lane road, has now been widened and localities along the artery – including Kalyani Nagar and Viman Nagar – have become posh areas.



References and credits
 • W Somerset Maugham '1954/The Memoirs Of Aga Khan (Historical Photographs)
 • <https://tribune.com.pk/story/1219367/ir-aga-khan-iii>
 • http://www.newindianexpress.com/entertainment/aga_khan_iii
 • http://mynpages.it.edu/~apansara/Pune/images/PUNE_MAP.jpg
 • http://www.ucaa.ernet.in/~icac07/images/maps/map_of_Pune.gif
 • Ar. Akshay Deshpande (Recent photographs)

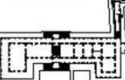


INTRODUCTION ABOUT AGA KHAN PALACE PUNE

COMPREHENSIVE CONSERVATION PROPOSAL FOR AGA KHAN PALACE PRECINCT, PUNE

SCALE: 1:100
 (60 AT 5 CM)

SEMESTER - I 2017-2018



SINHGAD COLLEGE OF ARCHITECTURE		SIGN/STAMP
FIRST YEAR MASTER OF ARCHITECTURAL CONSERVATION		
PRINCIPAL DR. BANANI BANERJEE	FACULTY DR. VAISHALI LATAKAR DR. SONAL KARANIKAR DR. SOURABH MARATHE DR. KOMAL POTDAR	STUDENT'S NAME KETAKI BADGE, MEGHA BHUTTE, CHAITRALI DESHPANDE JANHAYI DHAGE, JAYANTI GALAGALI, GANESH GODSE SHIFA KHAN, RUTURAJ KULKARNI, MANISH MORE, TRUPTI NAIK SHREYAS PARANJPE, SAMIKSHA PATIL, YOGITA PUROHIT

Sinhgad College Of Architecture. Pune.

CO-CURRICULAR

DESIGN COMPETITIONS



The Team With Dr. M. V. Telang Sir.



The Certificate

Everest Design Challenge 2017

Students of fourth year B. Arch. participated in Everest Design Competition organised by Everest building solutions company on 7th July 2017 in Ahmedabad. They had to design a bungalow using Everest products and analyse their advantages and won the first prize. The winners were Anket Tathed, Shardul Kanase and Hrishikesh Gawade

Multi-utility Urban space: a social project undertaken by students of Sinhgad College of Architecture, Pune by converting existing cluttered and chaotic space below Navle Bridge into an artistically and creatively articulated lively place with waste and discarded materials for people to use for sitting, relaxing and reading newspapers. The process of entire work was documented and submitted as an entry for annual convention of NASA (National Association of Students of Architecture) Trophy. The work was completed in a week time with the participation of local people, vendors and even with the cooperation of police personnel and inaugurated on 19th August, 2017.



BEFORE

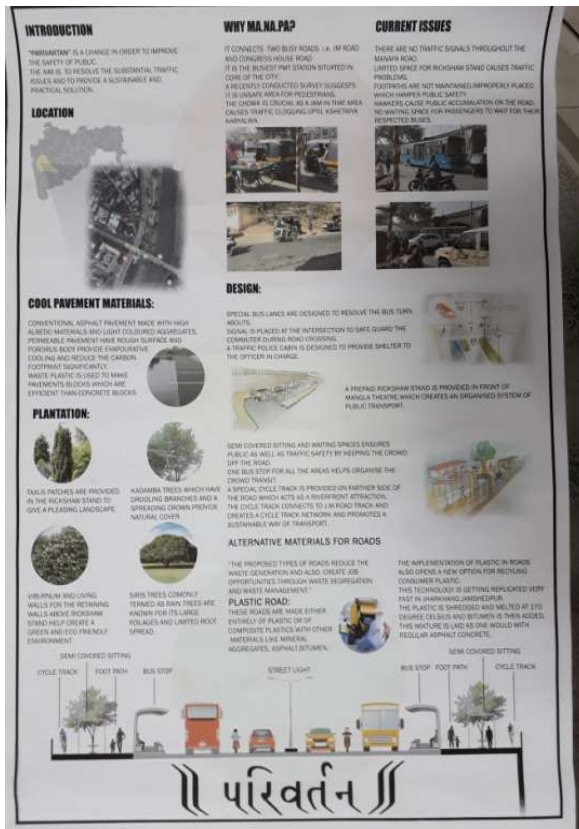


AFTER

**S w a t c h
B h a r a t h A b h i y a n**

Parivartan – 2018

Parivartan – 2018: A model-making competition was jointly organized by Save Pune Traffic Movement (SPTM), Action for Pune Development, Pune Traffic Police and Bridgestone Road Safety Education Program on **17th February, 2018 in Pune**. They wanted novel suggestions from college students for what needs to be done to improve the layout of a specific road orchhowk in Pune, which was to be presented in a 3D model or a 2D sketch. First Prize in college category was Won by students of second year B. Arch. of Sinhgad College of Architecture, Pune. Winners were Ajinkya Ghodnadikar, Abhinay Jadhav, Pranav Kale, Rishikesh Jadhav, Vishal Kangne, Masud Kazi, Saurabh Joshi, Pratik Gugale and Abhishek Jain.



Students work & Awards Ceremony

NASA Convention 2018

60th NASA (National Association of Students of Architecture) annual convention was hosted by D.C. School of Architecture and Design at Vagamon, Kerala from 29th January to 2nd February, 2018. Almost 3000 students from 180 Architecture colleges in the country participated in various academic trophies and on-spot competitions.

The students of Sinhgad College of Architecture won the first rank for GRIHA Trophy among the 55 participating colleges. It was an Multi-Purpose Complex design competition, site was in Gurgaon about 3.95 acres. The winning team was consisted of Tanmay Patil, Hrishikesh Gawade, Sanket Veerkar, Aditya Gawade, Darshan Gaikwad, Soniya Joshi, Deepanshi Jaiswal.

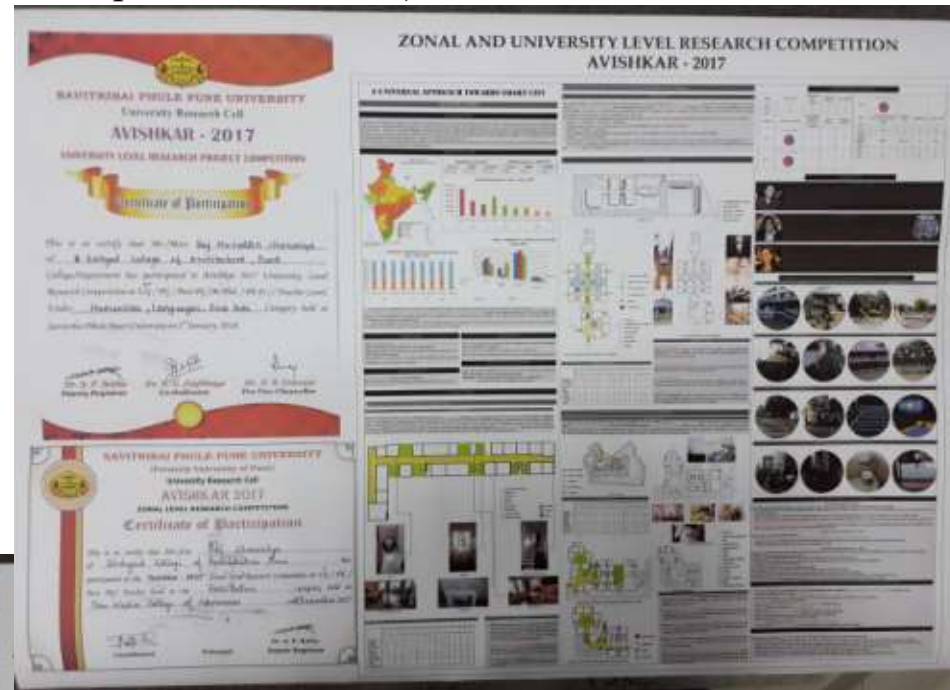
The post NASA event i.e. TERI WSDS (World Sustainable Development Summit) was conducted at New Delhi, India Habitat Centre on 15th of February 2018. The winning team was invited to present in the summit.



T
R
O
P
H
Y

Aviskar 2017 (Research Competition of SPPU)

Two students V. Divya, and Raj Charniya of final year B. Arch. were selected in the qualifying round and participated in zonal level research competition of SPPU 'Aviskar' 2017 in undergraduate level architecture category.



Work of Raj Charniya



Work of Divya

QUIZ COMPETITION

Arcumen Quiz competition

The students of B. Arch. are participating and winning prizes in national level Arcumen Quiz competition for architecture students organized by Ethos, Kolkata, for many years. In Arcumen13 in 2016, Amar Agarwal and Jaisal Sangvi participated and got 4th rank in western zone. In Arcumen14 in 2017, same students qualified in zonal level with 2nd rank to participate in national level and stood 4th. In Arcumen15 in 2018, two teams from fifth year B. Arch. (1. Amar Agarwal & Jaisal Sangvi, 2. Neeraj Kripalani & Yash Parikh) qualified to participate in national level to be held in New Delhi on 10th March, 2018



From extreme right – standing:

Jaisal Sangvi & Amar Agarwal

NASA: TROPHY ENTRIES

DISPLAY WALL
ENTRY
SCIENCE PARK
MEDITATION AREA
AMPHITHEATRE
MAZE
DR. DABHOLKAR SCULPTURE
CULTURAL GATHERING SPACE
VISRAJAN TANK

FEAR
STARTING WITH FIRE WHICH RESEMBLES FEAR WE MOVE THROUGH THE SITE LAYER AND TOWARDS THE CRUISES OF SUPERSTITION FIRE FORGES A METAL FEAR FORGES THE WIND INTO SUBMISSION OF SUPERSTITION. THE GATE AND THE MAZE CLIFF FEAR INTO THE LSCA

ENTRANCE 1
THE SITE IS WIND OUT OF RED WOOD IT IS INSPIRED BY THE CROWN OF THORUS

MAZE:
THE MAZE MADE OF SHRUBS REPRESENTS THE UN-CLAR ELEMENTS OF OUR SOCIETY AND SHOULD US THE SPACE BETWEEN SCIENCE AND SUPERSTITION.

DR. DABHOLKAR SCULPTURE
THE SCULPTURE IS A SYMBOL OF THE WORK AND BELIEFS OF DR. DABHOLKAR INITIALLY THE SOCIETY WAS IN A SMALL STATE THE PEOPLE WERE BELIEVED TO BE PHYSICALLY AND MENTALLY AND CONSIDERED THE SOCIETY. PEOPLE LIKE DR. DABHOLKAR WORKED AS ALLIES WHO WERE RESISTANT TO THE CORRUPTION AND HELPED STOP THE DECAY OF SOCIETY.

WALKING ON WATER
WE DURESS ONE TO GO PAST THE ETHIC AND CONVICTION TO CHANGE HIS/HER

FLYING IN AIR
THE SITTING IS WIDE TO PERCEIVE LEVITATION. LEVITATION SHOULD WARRIORS WHICH ARE THE TOOLS TO RESE FEAR AND OPPRESSION OVER THE COMMON PEOPLE.

MEDITATION AREA
IT CONSIST OF TWO PARTS AN OPEN SITTING ON BASALT STONE A TEAK WOOD PLATFORM WITH PAROOL. THE MEDITATION AREA IS PLACED AROUND A CHISTING BANYAN TREE.

NIGHT VIEW

FAITH
THE PATHWAY DEPICTS THE THOUGHT PROCESS OF A PERSON WHO RISE FROM BEING A VICTIM TO A VICTOR. THE AIR GIVES US LIFE BELIEF GIVES US THE POWER LIVE.

REALITY
THE SCULPTURE DEPICTS THE POWER SCIENCE AND REASONING WHICH PROMOTES ONE OF THE SUTRAS OF DR. DABHOLKAR. THE SCULPTURE SHOWS THE STRUGGLE OF A VICTIM WHO RISE FROM SUPERSTITION WITH AN ALIEN AS A GUIDE. THE SCULPTURE IS MADE OUT OF STONE.

WALKING ON COAL
EXHIBITS THE STRUGGLE OF SCARCE PEOPLE WHO BEAR THE BURDEN OF SUPERSTITION.

VISRAJAN TANKS
THE PROPOSED TANKS ARE USED FOR IMMERSION IN FESTIVE SEASON AND AS A POLYTRON IN REMEMBRANCE OF THE VESU. TANK IS DIVIDED IN TWO PARTS ONE FOR SHIP SOULS AND THE OTHER FOR WILD SOULS. SOULS INCORPORATE CAN BE USED TO DISSOLVE RISE AND TURN THE RESOLVE IN FERTILIZER AND CHALK. THE WILD OF DOGS THAT ARE DISSOLVED CAN BE USED FOR PORTMANING DURING DUAL AND USED FOR MAKING IDOLS AGAIN. ALSO A SOIL CONTAINING CHALK IS COVERED OUT BY WHICH HELP REDUCE THE PRODUCTION OF NEW DOGS BY REPAINTING THE OLD ONES.

AMPHITHEATRE:
IT IS A GATHERING AND SITTING SPACE FOR RIV-SPRACHT. IT ACTS AS AN INTERACTIVE MEDIA BODY FOR EXCHANGE OF PROBLEMS AND CREATES A SOLID SOLUTION TO IT.

ENTRANCE 2
THE SITE IS INSPIRED BY NAVIGATE. HELPS INCREASE CONVICTION AND REASSURES THAT PERSON FOR A LONGER TIME.

CONCLUSION
PSYCHOLOGICAL- THE SITE WILL CHANGE THE OUTLOOK OF PEOPLE TOWARDS SUPERSTITION AND PROMOTE A MORE LOGICAL AND SCIENTIFIC WAY OF LIFE. A BROAD AND DIVERSE MINDSET IS PROMOTED FOR THE SOCIETY. IN A WAY IT HELPS STRENGTHEN BELIEF ON RELIGION AND UNDERSTAND THE TRUE MEANING OF ALL THE TECHNIQUES.
HYGIENE- WATER THROUGH THE SHELTERED PEOPLE WILL START RESPECTING THE PLACE BY NOT URINATING AROUND WHICH THEY ARE HABITUAL TO IT. THE SURROUNDING AREA WILL EVENTUALLY BE A HYBRID FUNCTIONALITY WARE BEFORE.
ECOSYSTEM- SURROUNDING AREAS POLLUTED AND IS BEING USED AS A GARBAGE DUMP. BARK CHIPS OF TREES ARE PRODUCE TO REDUCE SOIL AND AIR POLLUTION. A SPECIFIC SET OF TREES AND PROPOSED LUSH HAVE A LOT OF INDIVIDUAL USES WITH AN ADDITIONAL PLANTING AND HELP THE ECO-SYSTEM FUNCTION AS IT SHOULD.
POTENTIAL- THE SITE IS IN CLOSE PROXIMITY TO METRO STATION AND BUS STOPS AND IS LOCATED IN THE HEART OF THE CITY. THESE FACTORS WILL INCREASE THE POTENTIAL ON THE SITE. THE SITE BEING AN AWARENESS CENTRE WILL BE A HUGE ATTRACTION POINT FOR THE CITY.

SITE SECTION

TAJWAR AND PEARL AND BANJAN TREES
ARE BELIEVED TO HAVE SPIRITS AND GHOSTS DUELING WITH THEM. HOWEVER THESE TREES GIVE A COOLING EFFECT. PREVENT INFECTIOUS BLEMISH THE BODY AND ELIMINATE BAD ODOR.

BABUL IS A THORNY TREE
WHICH IS BELIEVED TO CREATE DISPUTES AMONG THE PEOPLE. ACCORDING TO BANJAN, MANGO, GULMOTAR, ALMOND, DATE, POLAR, AND PROVIDE FULL SHADE.

VEGETATION REPRESENTS FAITH
AS IT GROWS THROUGH ANY OBSTACLE. FAITH HELPS ONE BREATH THROUGH HIS SHELLS AND ATTAIN PROSPERITY AND MORALITY.

PROPOSED BAMBOO LIGHTING ON SITE
MADE OUT OF PERFORATED BAMBOOS AND GIVES AN ECO FRIENDLY FEEL.

MOHAMMAD SHAHEER LANDSCAPE TROPHY 2017 - 2018
PAGE 2/2

NASA

BRIEF INTERPRETATION

REFLECTION IS A SCIENTIFIC PROCESS OF THROUING BACK THE RAY OF LIGHT WHEN INCIDENT ON A SURFACE. THE POINT OF REFLECTION IS AS IMPORTANT AS THE INCIDENT AND THE REFLECTED RAY.
 AT A METRICAL, PHYSICAL LEVEL, IT IS AN EVER-EVOLVING REPRESENTATION OF OUR CULTURAL THOUGHTS AND FEELINGS. IN THIS SENSE, REFLECTION IS A CONTINUOUS TRANSFORMATION OF PAST CULTURE AND THOUGHTS MATERIALIZED INTO PRESENT LANDSCAPE.



DR. NARENDRA DABHOLKAR WAS A REFORMIST WHO PACKLED SUPERSTITION. DESIGNING SPACES MEANS EXPERIENCING STORIES. A GOOD LANDSCAPE CREATES AN EVER-LASTING MEMORY IN OUR SUBCONSCIOUS MIND.

LANDSCAPE ARE UNDERPANNED BY PERSONAL HISTORY. SOME ARE DESIGNED TO RELIVE SPECIFIC MOMENTS ABOUT CULTURE, ECOLOGY, PEOPLE AND PLACE.

LOCATION

PUNE IS 8TH LARGEST ECONOMY IN INDIA. IT IS THE SECOND LARGEST METROPOLIS IN MAHARASHTRA AND HAS A GDP OF 48 BILLION USD.

SITE LOCATION - RIVER FRONT SITE, UNDER MAHARASHI SHINDE BRIDGE, NEAR JANGALI WAKHANU ROAD, PUNE.

SITE CO-ORDINATES - 18° 27' N 73° E

HEIGHT ABOVE SEA LEVEL - 580 METRES

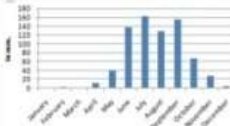


CLIMATE

CLIMATE - SEMI-ARID CLIMATE

AVERAGE TEMPERATURES - RANGING BETWEEN 38 - 29 DEGREES CELSIUS

AVERAGE RAINFALL - 700MM (JULY TO OCTOBER)



CASE STUDY

SENSATIONAL GARDEN, FROSINONE, ITALY.

THE LAKE OF PUBLIC SPACES OPERATE AN ABSOLUTE DEGREE OF THE ENTIRE AREA AND THE NEIGHBOURHOOD HAS BECOME AN UNSUSTAINABLE COMMUNITY.

GOAL - THE GOAL OF THE PROJECT IS TO INVITE USERS TO A RITH IN WHICH SCENE IS ALWAYS CHANGING.

FIVE HUMAN SENSES ARE THE WAY THOW OF THE GARDEN

SMELL - ATTRACTED BY THE SURROPT OF ESSENCE
 HEARING - BEAUTIFUL ROSE GARDEN
 TOUCH - FROM FEELING THE MATERIAL OF THE CENTRAL CONE
 TASTE - STIMULATED BY FRUIT TREES



ABOUT DR. DABHOLKAR

DR. NARENDRA DABHOLKAR WAS A REFORMIST WHO UNDERSTOOD THE ELEMENTS OF SUPERSTITION (FEAR BELIEF, FAITH) AND TRIED TO PROPAGATE A CHANGE IN MINDSET OF PEOPLE THROUGH REALITY AND SCIENCE.

DR. DABHOLKAR TOLED HARD TO DECLASSIFY SUCH MYTHS AND EDUCATE COMMON PEOPLE. HE BELIEVED THAT THERE IS A CAUSE BEHIND ANY AND EVERY THING THAT EXISTS OR HAPPENS AND THERE IS A SOLID SCIENTIFIC JUSTIFICATION FOR IT.

HE FOUNDED MANSU (MAHARASHTRA ANTI-SUPERSTITION MAHODOLAN SAMITHI) AN ORGANISATION THAT CHALLENGES AGAINST SUCH ANTISOCIAL ELEMENTS.

DR. DABHOLKAR WAS POSTHUMOUSLY AWARDED PADMASHRI AWARD FOR THE SOCIAL WORK IN 2014.

HE WAS ASSASSINATED ON 20TH AUGUST 2018.



TRIGGERED BY HIS MURDER, THE BANNING ANTI-SUPERSTITION AND BLACK MAGIC PROHIBANCE BILL WAS INTRODUCED.

SITE JUSTIFICATION

PUNE IS A METRO CITY WITH FAST CHANGING URBAN LANDSCAPE.

PUNE BEING AN IT AND EDUCATIONAL, HAS IT HOSTS A LOT OF STUDENTS AND YOUNG PROFESSIONALS ALONG WITH HEAVY INFLOW OF IMMIGRATING PEOPLE.

OUR SITE, LOCATED IN THE HEART OF THE CITY IS SURROUNDED BY A LOT OF EDUCATIONAL INSTITUTIONS AND COLLEGES.

DR. DABHOLKAR'S WORK WAS STRONGLY INFLUENCED IN THIS AREA.

SITE SURROUNDINGS



SITE PLAN

STRENGTH

SITE HAS STRONG CONNECTIVITY AS IT IS IN THE HEART OF THE CITY AND LINKS THE OLD PART OF THE CITY WITH URBAN FRONT.

SITE IS SET TO EVOLVE WITH FUTURE DEVELOPMENT PLANS. WATER LINE AND RIVER FRONT DEVELOPMENT PLANS ENHANCED ON OUR SITE IN CURRENT OR (2020 - 2025).

SITE SURROUNDING ATTRACTS PEOPLE OF ALL AGES. WITH PRESENCE OF SEMI-URBAN GARDEN, FC ROAD, UN ROAD AND A LOT OF COMMERCIAL COMPANIES IN VICINITY.

WEAKNESS

SITE IS PRONE TO WATER LOGGING DURING MONSOON.

DEVELOPMENT OF METRO LINE MAY HINDER ON SITE VISUAL.

SITE IS USED AS A GARBAGE DUMP.

SITE HAS STRONG OPPORTUNITIES OF URBAN DEVELOPMENT.

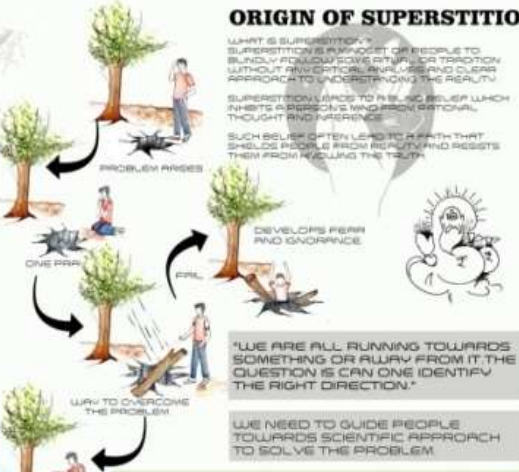
SITE CAN BE TRANSFORMED INTO A VISIBANT PLACE.

SITE HAS HIGH POTENTIAL TO ATTRACT PEOPLE FOR SOCIAL ACTIVITIES.

SITE HAS A LOT TREES WITH LARGE FOLLAGES.

THREAT

WATER CHANNEL PRESS INCLUDING STREETS CREATE STINKING ENVIRONMENT.



ORIGIN OF SUPERSTITION

WHAT IS SUPERSTITION? SUPERSTITION IS A FEEL OF PEOPLE TO BLINDLY FOLLOW SOME RITUAL OR TRADITION WITHOUT ANY CRITICAL ANALYSIS AND CLEAR APPROACH TO UNDERSTANDING THE REALITY.

SUPERSTITION LEADS TO BELIEF WHICH INHERITS A PERSON'S WHO BEEN ORIGINAL THOUGHT AND EXPERIENCE. SUCH BELIEF OFTEN LEAD TO A PATH THAT SHOULD PROBLE FROM REALITY AND RESISTS THEM FROM READING THE TRUTH.



"WE ARE ALL RUNNING TOWARDS SOMETHING OR AWAY FROM IT. THE QUESTION IS CAN ONE IDENTIFY THE RIGHT DIRECTION."

WE NEED TO GUIDE PEOPLE TOWARDS SCIENTIFIC APPROACH TO SOLVE THE PROBLEM.

CONCEPT

THE DESIGN CONCEPT FOR COMMEMORATION OF DR. DABHOLKAR WAS INSPIRED BY HIS PHILOSOPHY AND WAY OF LIFE.

DR. DABHOLKAR WAS A CRUSADER WHO WORKED TENACUOUSLY TO ERADICATE ALL SUPERSTICES.

HE HAD A SET OF SUPRIS / PRINCIPLES THAT HE WORKED ALONG THE LANDSCAPE DESIGN CONCEPT IS GOVERNED BY THE BRAC ELEMENTS OF LIFE.

THESE ELEMENTS ARE CO-LINKED WITH THE CORE REASONS OF SUPERSTITIONS.

FEAR BELIEF FAITH REALITY

SUPERSTITION

TO OPPOSE SUPERSTITION WHICH EXPLOIT HUMAN. REALITY IS THE TRUE FORM OF SUPERSTITION.

FIRE+FEAR

LIKE FIRE FEAR CAN TRANSFORM STATE. -BE ANTECEDENT OF PROBLEM. -BE INDUCEMENT TO SOLVE THE PROBLEM. FEAR IS CAUSE OF SUPERSTITION.

AIR-BELIEF

LIKE AIR BELIEF IS DYNAMIC AND MOBILE. -KEY TO HUMAN EXISTANCE. -MEDIUM BETWEEN FEAR AND FAITH. -BELIEF IS MEDIUM OF SUPERSTITION.



'AABHAS zonasa 2k17'

ZONAL NASA AT SINHGAD COLLEGE OF ARCHITECTURE, PUNE

(2nd to 5th November, 2017)

NASA (National Association of Students of Architecture) has been founded 60 years before in 1957, is a unique organisation completely managed by under graduate students from nearly 400 architecture colleges of all over India. The main activity of NASA is the annual convention where six to seven thousand students participate. Apart from that, the colleges are grouped into 6 zones, where zonal NASA conventions are arranged annually in a selected host college. This year zonal NASA '**AABHAS zonasa 2k17**' convention of Zone 3 was hosted in Sinhgad College of Architecture in Pune, in VadgaonBudruk campus from 2nd to 5th November, 2017. There were more than 850 students from 23 colleges from Pune, Kolhapur, Solapur, Aurangabad, Nashik and Nagpur regions of Maharashtra participated in the convention.

There were various events with competition organised to learn and for fun, where prizes and trophies were distributed to the respective colleges. various academic workshops and seminars were arranged which were conducted by eminent experts from all over the country. Competitions of cultural events like group dance and MR. & Ms. ZONASA were highly applauded. Moreover, many on spot games were organised for both fun and for interactions. A gala DJ night event was planned on 5th.

The inauguration of the convention was on the hands of eminent architect Mr. Christopher Charles Benninger and Mr. Ramprasad. The key note speaker for the second day was Ar. Shailesh Devi from Nashik. The valedictory function was graced by Ar. Vijay Garg, Vice-President, Council of Architecture and Ar. D T Vinod Kumar, from Hyderabad. On both the days, founder president of Sinhgad Technical Education Society, Prof. M. N. Navale graced the events.



Ar. Christopher Charles Benninger

Attended by Mr. Ramprasad, Ar. Ramesh Chavan

Graced by Prof. M N Navle, Founder President, STES



Ar. Vijay Garg gave a motivational speech to the students by stating the important roles of an Architect in the society and how to inculcate it within











WORKSHOPS AT ZONASA



First Year B. Arch. Village Settlement study

<p>Place: Khopi village (35 Km from Pune), Date: 11th& 12th January 2018 Faculty: Ar. AditiPhadke, Ar. ManasiKhope, Ar. Snehal Joshi, Ar. NovinaArunan 38 students Div. A</p>		
<p>Place: Kasba Beed Village (17 kms from Kolhapur) Date: 10th to 12th January 2018 Faculty: Ar.Niketa Patil, Ar.Ninad Jog 39 students Div.B</p>		
<p>Place: MardheVillage, Satara Date: 15th to 17th January 2018 Faculty: Ar. KavitaPatil & Ar. Megha Butte 39 students Div.C</p>		
<p>Place: Pabal (50 Km. from Pune), Date: 10th to 12th January 2018 Faculty: Ar. PradnyaPatki, Ar. Sunil Shastri 39 students Div.D</p>		

Second Year B. Arch.	
<p>Place: Ahmedabad, Date: 25th Nov to 1st Dec 2017 Faculty: Ar. Mugdha Kulkarni, Ar. S. B. Shinde, Ar. Priti Chinnapatan 37 students Div.A</p>	 
<p>Place: Bhuj, Ahmedabad Date: 27th Nov to 4th Dec 2017 Faculty: Ar. Tanmayee Panse, Ar. Vivek Ddandawate AD Project: Art & Craft center at Bhuj 33 students Div.B</p>	 
<p>Place: Bhuj, Gujrat Date: 20th to 26th Nov. 2017 Faculty: Ar. Shilpa Kshirsagar, Ar. Anjali Rasane Ar. Trishna Mahadkar 40 students Div.C</p>	 
<p>Place: Pondicherry, Tranquebar, Dakshinchitra Date: 20th to 26th Nov 2017 Faculty: Ar. Kirti Bajare, Ar. Neha Kawane Number of students:33 students Div.D</p>	 

River Art Circle

River Art Circle: A social project undertaken by students of Sinhgad College of Architecture, Pune to make the city of Pune clean and beautiful with art. A stretch of roadside area along Mutha river was cleaned and painted by them on Sunday, 11th February, 2018 to make city a little better.

Sachit Shetty, Lokesh Kadam, Mandar Kere, Hasan Fakri, Shantanu Gaikwad & Rucharani Kunwar Patil of final year B. Arch. coordinated the project.



RIVER ART CIRCLE

we'll paint *we'll clean*

We all will make the city a little better

On 11th February
7.30 am onwards

Location

@river_art_circle @riverartcircle

Blood Donation Camp

Sou. Kashibai Navale Hospital arranged a blood donation camp at SCOA on Wednesday, 9th March 2018. A total of 111 units of blood were collected from donors belonging to students and staff of SCOA and three other institutes in the campus.





Nirbhaya Kanya Yojana (Self Defense):

One day Workshop on Self Defense was held on Monday, 8th Jan 2018 for all girl students of SCOA under the scheme of SPPU. Mrs. Shilpa Chillal, a National level Judo player conducted the program. In the first session, an audio-visual presentation was made to understand importance of self-defense, in second session, she demonstrated various safety techniques to safeguard from opponents.



Tree plantation at Taljai hill on 17/7/2017 by students and faculty of SCOA.



Interactive Session on **Personality Development** was held on On Friday 22nd September 2017 at SCOA. Students, Teaching & Non teaching staff participated in the program. Mr.Rajesh Chavan, Founder, Jivan Sanjivani Manav Sanshodhan & Vikas Sanstha ,Wai, Satara conducted a thought provoking session on how to improve our personality by seeing our score card by reading /observing videos for betterment of our personality.



K.B.P. Earn & Learn Scheme

SCOA adapted the scheme of SPPU for needy students to help 9 enrolled students in 2017-18, who were paid against assisting in working in administration office, computer lab & in library of SCOA, as per the guidelines. They were trained and also given the task of documentation, harvesting e-books related to Architecture & allied field from free sources. Students shown enthusiasm in working and as a whole Earn & learn scheme definitely a boost for students who are financially weak & who wants to fulfill their dream of learning by earning simultaneously.



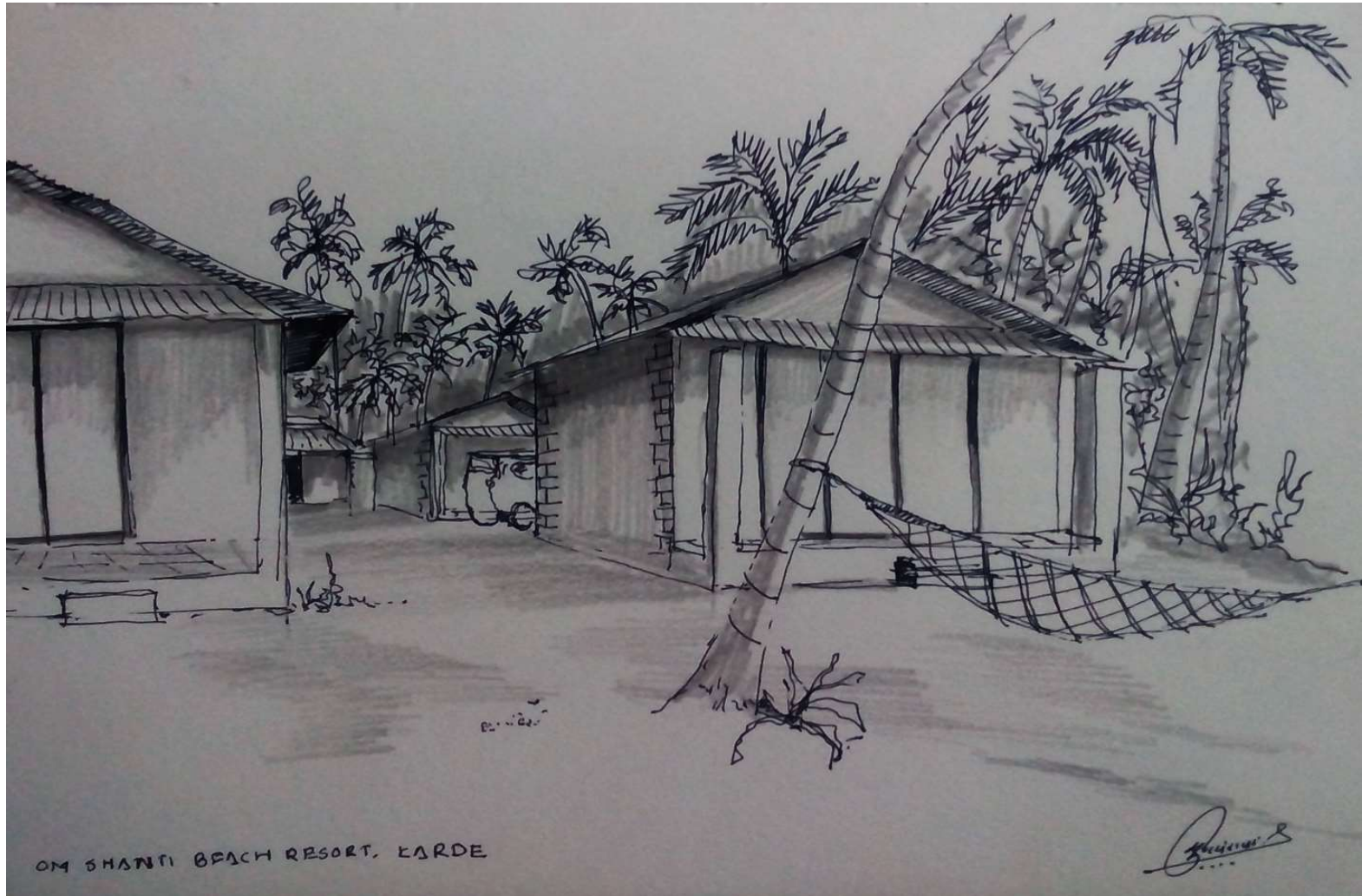
Disaster Management Workshop

A two day Workshop on disaster management Was conducted on 19 & 20th December 2017 under the scheme of SPPU. Mr. Nilesh Karmarkar , Fire Officer Tata Motors Ltd., talked about Fire prevention and extinction methods. He demonstrated how to check the working condition of fire extinguisher & operate when need arises. He demonstrated Rescue techniques & methods with the help of student volunteers.

Painting By Ar. Sudhir Deshpande, Faculty



Sketching By Ar. Sudhir Deshpande, Faculty



CO-CURRICULAR



Vitra Design Campus

Prof. Kalpana Hadap, Faculty

Architect Philip Johnson once wrote: “Not since the Weissenhofsiedlung in Stuttgart in 1927 has there been a gathering in a single place of a group of buildings designed by the most distinguished architects in the Western world.”

From 1981 onwards, with the vision of the entrepreneur and collector, Rolf Fehlbaum, created a Campus in Weil am Rhein near Basel, surrounded by residential areas and natural landscape in the borders of Switzerland, Germany and France, as commitment to experimentation and demonstration of design excellence.

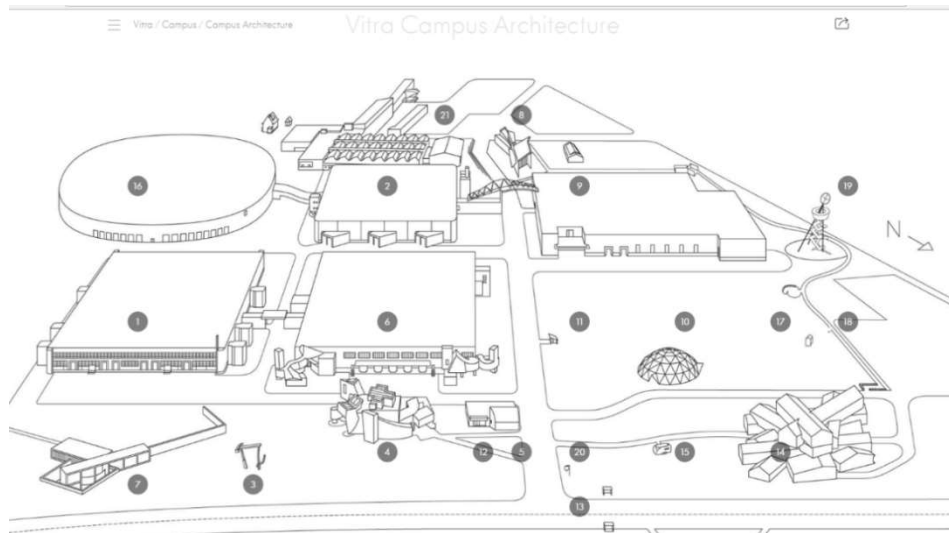
May 2017, I was fortunate to pay a visit to Vitra Architecture/Design Campus and experience a place totally dedicated to contemporary architecture, furniture design, product design by world renowned architects, designers and visionaries. Iconic and classic works we have studied in architecture school and admired in books throughout the years. It was indeed an eye opener to see this place and be lost in a different almost ethereal world of design.

This amazing campus is an exhibition itself consists of various buildings designed by Frank Gehry- Vitra Design Museum, Vitra Design Museum Gallery, Museum Gate and Factory building, Zaha Hadid – Fire Station, Swiss Jacques Herzog and Pierre de Meuron – Vitrahaus, Tadao Ando – Conference Hall, Nicholas Grimshaw – Factory buildings, Alvaro Siza – Factory Building, Buckminster Fuller/ T.C Howard- Dome, Renzo Piano – Diogene, SANAA – Factory building and Carsten Holler - Vitra Slide Tower.



ZahaHadid – Fire Station 1993 Jacques Herzog and Pierre de Meuron – VitraHaus 2010 ,
VernerPantone chairs (photographs taken by the author)

1. Factory Buildings
Nicholas Grimshaw, 1981 / 1983
2. Factory Buildings
Nicholas Grimshaw, 1981 / 1983
3. Balancing Tools
Claes Oldenburg & Coosje van Bruggen, 1984
4. Vitra Design Museum
Frank Gehry, 1989
5. Vitra Design Museum Gate
Frank Gehry, 1989
6. Factory Building
Frank Gehry, 1989
7. Conference Pavilion
Tadao Ando, 1993
8. Fire Station
Zaha Hadid, 1993
9. Factory Building
Álvaro Siza, 1994
10. Dome
after Richard Buckminster Fuller, 1975 / 2000
11. Petrol Station
Jean Prouvé, ca. 1953 / 2003
12. Vitra Design Museum Gallery
Frank Gehry, 2003
13. Bus Stop
Jasper Morrison, 2006
14. VitraHaus
Herzog & de Meuron, 2010
15. Airstream Kiosk
1968 / 2011
16. Factory Building
SANAA, 2012
17. Diogene
Renzo Piano, 2013
18. Álvaro-Siza-Promenade
Álvaro-Siza, 2014
19. Vitra Slide Tower
Carsten Höller, 2014
20. Bell, from: 24 Stops
Tobias Rehberger, 2015 / 2016
21. Vitra Schaudapot
Herzog & de Meuron, 2016



The Vitra Home Collection in VitraHaus is a vast collection of furniture and product design from the twentieth century, a permanent exhibition of modern furniture design from 1800 to the present. The spaces depicting living rooms, office spaces have an arrangement of interior spaces as a collage, a mix of old and new, classic and contemporary. Icons of Classical Modernism by Le Corbusier, Alvar Aalto and Gerrit Rietveld, Bauhaus, Post war design from Scandinavia and Italy, American designers like Charles and Ray Eames and Isamu Noguchi, The 1960s and 1970s Radical Design, experimental plastic objects from the Pop era, modular furniture, and new office concepts. They have become classics – a term applied by Vitra to designs from another era that are still in production today and continue to move and inspire us. Postmodern design and present day Contemporary design, Computer aided design, DIY and Sustainable Design and recent designs produced with a 3D printer.

Collection of iconic chairs The Eames Lounge chair by Herman Miller in a living room setting



An Office Interior, Frank Gehry's Vitra Design Museum Visible Through The Window.



Photographs by
Prof. Kalpana Hadap, Faculty.

AN ODE TO THE DANCE OF LIFE.

Smit Badiani, B. Arch. V-A

Don't dance in a haste.

Time is short.

The music won't go on forever.

Listen to the rains fall on the ground,

Tap your feet to the music of crickets in the night.

Listen to kids blabber on a merry go round,

And gaze into the sun fading at night.

You better listen to all, you better dance gracefully.

Don't dance in a haste.

Time is short.

Be curious and ask questions.

Listen to the answers carefully and remember them for lifetime.

Go for a walk with your dog, and look at him play in a park.

When you worry and hurry through your day,

It is like an unopened gift...thrown away.

Dance is not a race.

Let the audience around you settle down.

Let the curtains of your life rise.

Let there be sunshine as a lime light just on you.

Grab each moment and listen to the music of your surroundings.

You better listen to all,

you better dance gracefully.

The story of Knossos, Crete in Greece

Dr. Banani Banerjee, Principal

Greece, the cradle of western civilisation is confronting a wide range of practical challenges today and no more compared with its prosperous European counterparts. It had once the glorious days with full of vigour, valour, events, wisdom, all associated with the aura of great mythology. The country has an official name as Hellenic Republic, covers mainland and 6000 islands on Mediterranean, Aegean and Ionian seas out of which 227 islands are inhabited. The largest of the islands is Crete, the setting of the early Greek civilisation which is studied in history of architecture, not much explored in recent literature, haunted me over a long period to explore its past glory and current culture.

Aegean architecture of Bronze Age civilisation was flourished initially on the Mediterranean island Crete (3000-1200 B.C.) & after the island civilization destroyed the development shifted to Greece mainland Mycenae (1800-1100 B.C.). The island is located in a strategic location, almost in the centre of Mediterranean Sea that connects three continents: Asia, Europe & Africa. The people were partly Asiatic in origin (Ionian race), mainly traders, traded to mainland Greece, Asia Minor, Egypt etc. through sea.

Crete covers an area of 684 Sq.Km. of mountainous terrain with olive and grape cultivation and vast barren land of rocky sand and lime stone, surrounded by many beaches, is inhabited by 1.4 million (2011) and Heraklion is the Capital. In Greek mythology, Zeus is considered as the chief god, father of the gods and man, was born in Crete and was hidden by his mother Rhea in a cave on Mount Ida in Crete, the highest mountain in the island could be seen as snow cladded even in summer.

Sir Arthur Evans, an English archeologist, excavated Knossos palace in 1900 CE, 8 Km from Heraklion. The ruin of Knossos palace spanned in five acres of land and had a maze-like plan that reminded Evans of the labyrinth described in Greek mythology. Evans' restoration of the 3000 year old palace was focused to discover the mythological link; the story of the legendary mythological king Minos, the son of the god Zeus and Europa. He had a son named Minotaur, a half-bull and half-man, who was hidden by him at the center of the maze in his labyrinth palace at Knossos. Minotaur was killed by the Athenian

prince Theseus and escaped by the same route as he entered by unrolling thread from a ball of thread, which was given to him by the princess of Knossos, Ariadne. There is an association of bull with Minoan civilization, as numerous panels of wall painting in the palace are depicting bull, indicates that the Minoans probably did indeed worship the bull.

He inferred from the evidences found in the site; like two types of scripts of exclusive writing systems, which he named as Linear A and Linear B, a wide range of pottery, numerous wall paintings, and artefacts. Furthermore, the plan of the palace was made by the English archaeological illustrator and architect Piet de Jong in 1922-30, with the help of artists and architects for the Archaeological school of studies at Athens 'British School of Athens'.

Piet de Jong documented and reconstructed archaeological evidences accurately like pottery, frescos, figurines, artefacts, and architecture. Trained as an architect, he brought a scientific clarity and architectural sensibility to his work while interpreting in plan from the ruins of no clues. He designed and directed artists and architects for most of the architectural reconstruction work, mainly, the Queen's Megaron and Throne Room. His illustrations of watercolour reproduction of fresco paintings, object drawings and plates for the material excavated with pencil and ink are valued immensely in the interpretation of the archaeological remains. Piet worked with hundreds of plaster fragments that once formed the astonishing wall decoration for reconstruction of the "dolphin fresco" at Knossos, succeeded with a very small number of fresco fragments.

Evans and Piets were no mere the archaeologist and the architect; rather storytellers, transforming a ruin to come alive, as one experiences.

COLLEGE LIFE.....

Jaisal Sanghvi, *B. Arch. V-A*

Taking a walk, down memory lane,
Reflections play before my eyes,
Some joyous, some painful,
Many lows and many highs.

I look back at the days of college,
Those wondrous hours on the ground,
The time spent playing the fool,
In my golden memories, those years are bound.

The bonds of friendship that were forged,
Of kindness, were those lessons learnt,
Are special treasures from the past,
Unbroken and Unburnt....

Inevitably, life will take us apart,
Like a whole, split into parts,
Some will chase the dreams of others,
While a few will follow of their hearts.

In this cut throat world,
Few are of my kind,
It hurts to look back now,
At the path I've left behind.

I will never till my memory stay,
Forget my college life,
But as someone has said,
"Fragments of life is what life is made of" ...

ARCHITECTURAL QUIZ

Amar Agarwal, B. Arch. V-A

1. The Architect of which building is said to have been inspired to create this masterpiece by simple act of peeling an orange? Name building& architect?
2. Which tree has the botanical name tectonagrandis?
3. Name the first architect who win the Pritzker prize?
4. Name the architect who designed “gateway of India” Mumbai?
5. Which famous architect’s studio was called The Rookery?
6. Which Indian Temple is known as “Black Pagoda”?
7. Petronas twin tower is designed by?
8. The stone fencing railing in sanchistupa known as?
9. Who quoted: “ a house is a machine to live in it “?
10. Which style of architecture is also known as “noodle styles of architecture”?
11. Author of “New Landscape”?
12. Art of drawing and painting on stone is known as ?
13. The concept of serial vision coined by?
14. Name the architect who designed Bhurj Khalifa?
15. IIFM,Bhopal is designed by?

ANSWERS
 1) Sydney
 2) Teak
 3) Philip Johnson
 4) George Witted
 5) Frank Lloyd Wright
 6) Sun temple, Konark
 7) Cesar pelli
 8) Vedika
 9) Le Corbusier
 10) Art nouveau
 11) Charles correa
 12) Lithography
 13) Gordon Cullen
 14) Adrian smith
 15) Anantraje

ARCHITECTURAL CROSSWORD

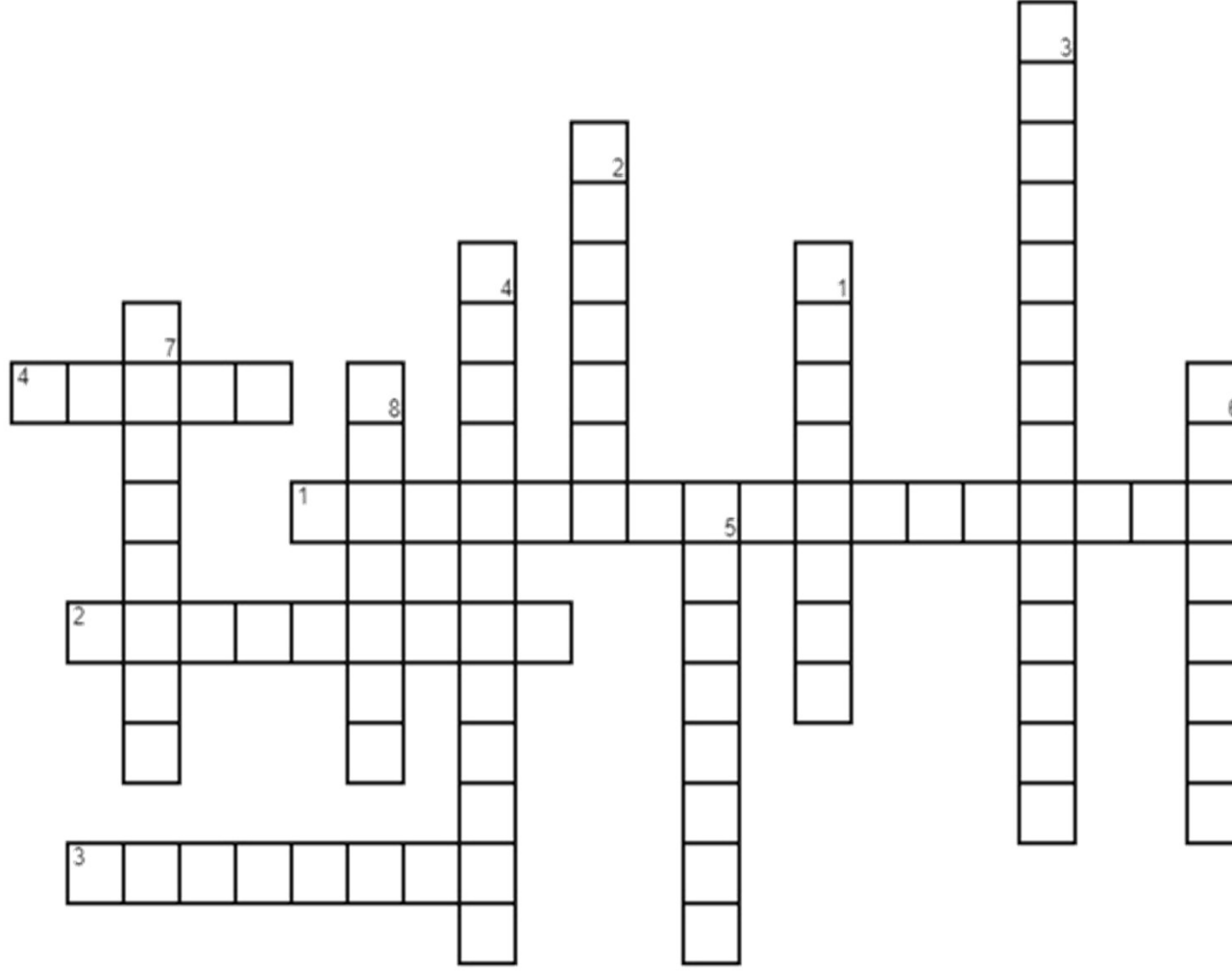
Amar Agarwal, B. Arch. V-A

ACROSS

1. Name the person considered to be the proponent of the geodesic dome
2. HeydarAliyev is designed by?
3. First reinforced concrete building in India?
4. Glass pyramid of louvre is designed by?

DOWN

1. Hall of nation is designed by?
2. First Indian architect to win Pritzker prize?
3. "Four books of architecture" author?
4. "Yes, is More" is quoted by?
5. Space between two arches is known as?
6. A stone carving of a draped female figure, used as a pillar to support the entablature of a Greek or Greek-style building is known as?
7. "Open to receive the created riches, open to distribute them to its people and others" This is how my designer, Corbusier described me?
8. "The final goal of all artistic is architecture" name the movement?



Across

1) Buckmin Sterfuller

2) Zaha Hadid

3) Golconde

4) Impei

Down

1) rajrewal

2) bvdoshi

3) andrapalladio

4) bjarkeingles

5) spandrel

6) caryatid

7) open Hand

8) bau Haus

EXTRA-CURRICULAR CULTURAL



KARANDAK OF STES, 2016-17

Duet song Competition

SINHGAD KARANDAK
22nd April - singing



KARANDAK OF STES, 2016-17

Fashion Show Competition





KARANDAK OF STES, 2016-17

First Runner-up – Solo Dance competition

SPORTS KARANDAK OF STES, 2017-18

Chess (Girls) runner up
Ayushi Paldival, TY B. Arch



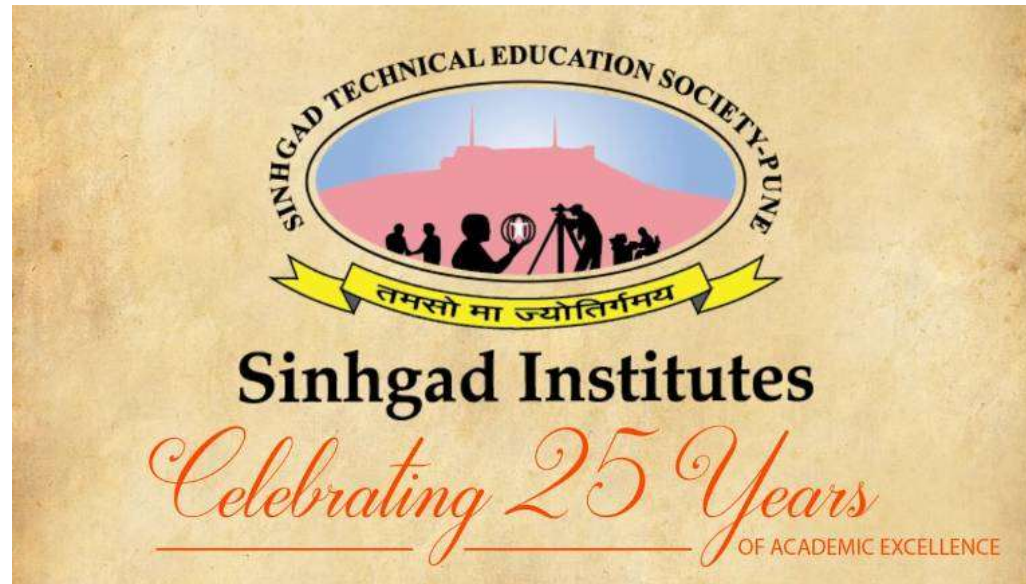
Sinhgad College Of Architecture. Pune.



SPORTS KARANDAK OF STES,
2017-18
Participation: Girls' Volley ball

SPORTS KARANDAK OF STES,
2017-18
Participation: Boys' cricket





Silver Jubilee Celebration of STES (2017-2018) at Sinhgad College of Architecture

Sinhgad Technical education Society has successfully completed 25 years of their existence in the education domain with the motto of academic excellence. As part of year long celebration of the Silver Jubilee, Sinhgad college of Architecture conducted a series of various programmes starting from August 2017. The program was coordinated by Dr. Vaishali Latkar and Prof. Priti Dhanwat, faculty of SCOA.

Event1 - Lecture Series and Felicitation of Students

The celebration was commenced on **12 August 2017** with a lecture series to celebrate the foundation day of the institute which was inaugurated by the Principal, Dr. Banani Banerjee. Ar. Mugdha Kulkarni, graduated M. Arch. from the same institute achieving top rank and joined as a faculty, presented her work on Conservation Proposal for Ahilyabai Holkar Wada, near Nashik: Rangmahal, Chandwad. The presentation was well-composed with her extensive research, documentation and Final integration of the design proposal. Three students of Division B, who won the first prize of design competition held by Everest cement company, also presented their award winning proposal. The presentation was followed by felicitation of all these students.



Event 2 – FUN ACTIVIES WEEK

A Celebration week was planned from 21st to 24th August, 2017 by all colleges in the campus to commemorate the silver jubilee of STES. A number of **FUN ACTIVIES** of extra -curricular and co-curricular events were planned daily during the week as Photo booth, fun games ,T- shirt painting and Sports. The activities were scheduled within 2:00 to 5:00 p.m., so that all the students of the campus would be able to participate after regular classes without any hindrance to their academic schedules.

Celebrating 25 Years
OF ACADEMIC EXCELLENCE
SINHGAD TECHNICAL EDUCATIONAL SOCIETYS

Sinhgad College Of Architecture, SKNCOA, Pune
SIOM, Pune

Invites
All the students for
participating in
FUN ACTIVIES

At Vadgaon and Ambegaon Campus

23 rd AUGUST	24 th AUGUST	TIME
MASK MAKING 	PRODUCT RING 	2:00 pm -
FLASH MOB 	FACE PAINTING 	5:00 pm
BLIND FOLD 	BUCKET AND BALL 	
CULTURAL CENTRE	MULTIPURPOSE HALL	REGISTRATION ON THE SPOT

Dr. B. Banerji UC Principal SCCA	Dr. S. Chavan Principal SKNCOA	Dr. P. Kulkar Director SIOM
Prof.M.M. Navale President	Dr. Mrs Sunanda Navale Treasurer Secretary	Mr. Rajit Navale Vice President
		Mrs. Rachana Adhikar Vice President



Event 3 – T-Shirt Painting Workshop

The students of first year across all divisions participated in a T- Shirt painting workshop as part of induction program on 5th September 2017. The workshop intended to bring forth the understanding of socially relevant issues across the globe and an expression to present them to the larger part of the society to create awareness regarding the same. Three designs were selected for their unique creative expressions and declared as three top ranks. The students were later rewarded for the same.

Later, student marched inside the campus wearing painted T-shirts with placard making a human chain, to convey various social messages.



Event 4- Sketching Competition

A sketching competition titled ‘Framing Places’ was organized on 6th October 2017, to capture the essence of historic environments in the city of Pune which is gifted with multiple dimensions. The participating students were taken to Mandai and Tulshi Baug area of older part of Pune City, accompanied by the faculty coordinators. They observed the structures and activities in the surrounding area, students made sketches of those selecting their own locations. The students enjoyed the activity and a few also came up with beautiful Tag lines.



Event 5- Origami Workshop

An origami workshop was organized for students just before the onset of Diwali vacations. on 10th October 2017. Ar.Ashwini Shitole and Ar. Devika Yadgikar, faculty of SCOA, conducted the workshop for a batch of 40 students across the college. They initiated it with a presentation explaining the basics followed by demonstration and explanation within the studio. The workshop was thoroughly enjoyed by the students and the outcomes of the workshop were variety of Diwali lights of varying shapes colors and forms.



Event 7 - Disaster management Workshop for heritage structure

The Disaster management Workshop was conducted by Dr. Rohit Jigyasu (ICOMOS), an expert in the field of disaster mitigation for heritage structures on 3rd November 2017. The morning session was commenced by a presentation on the aftereffects of disasters particularly to built and cultural heritage and the mitigation devices adopted to tackle critical situations. The post lunch session focused upon a live case study within the context of Pune city. The participants were taken to a heritage structure of Pune; Nana Wada, where groups were formed asked to formulate a disaster management plan for the same after careful observations and study. The students later assembled in the college premises to present their plans which received expert comments from Dr. Rohit Jigyasu



Event 8 – Lecture of Dr. Manish Chalana: An architect from USA

Dr. Manish delivered a wonderful lecture on **20th December 2017** on ‘Rethinking Sustainability to transform Design and planning practices’. He presented the case study of Seattle in US wherein he discussed the present situations, issues and concerns. The integration of sustainability from planning execution to the detailing of the built was highlights of his presentation. He also spoke of the socio-economic status of the region and how global decisions affect the planning tools and mechanisms across the world. He summed up his lecture taking in to consideration the proximity of workplaces, quality of life indicators and comfortable built environments through sustainable decisions can make a city livable and improvise on the quality of life of the citizens.

Event 9 – A workshop on Heritage and Sustainable city

A day-long workshop was arranged in collaboration with INTACH on 23rd January 2018 with the intention of providing training to the volunteers for Heritage and sustainable city to sensitize individuals to the comprehensive role of heritage within the city of Pune and to inculcate efforts to achieve sustainable development through participatory process. The experts were from various fields: Ms Shiva Rawat, a conservation expert, Mr Sharveya Dhongade and Dr. Chetan Sahastrabuddhe, both conservation architects, Mr. Bal Kulkarni, an engineer, Mr Sujit Patwardhan, an environmentalist and Mr. Shyam Dhavale, former chief of conservation department of PMC. The participants were students of the campus from varied streams such as Engineering, Architecture, Management and law. The experts addressed to common recurrent issues in city development to quality of urban life. Also the experts discussed the avenues of approaches for sustainable development and measures adopted in various cases. Diverse disciplines of participants brought in a better participation and dialogue. The program was coordinated by Dr. Vaishali Latkar and Prof. Priti Dhanwat, faculty of SCOA.



CONVOCATION 2018

The convocation ceremony of SCOA for the students graduated in 2016-17 was celebrated on 23rd March 2018 at the Multipurpose hall of the college. The function was graced by senior and very respectable architect and teacher Ar. Jayant Sathe as the chief guest. The ceremony was conducted as per the directives of SPPU. It was commenced with the procession of the chief guest, CEO (Chief Examination Officer) of SCOA, principal, faculty, staff and graduates. Ar. Jayant Sathe is practicing for more than 45 years in Pune,

The ceremony at the venue started with lighting lamp by the chief guest, the Vidyapith song, followed by welcome address of the principal and speech of the chief guest. B. Arch. Degree certificates of SPPU were distributed to all the Graduates at the hands of the chief guest. The program was ended with vote of thanks by the CEO and national anthem. Arrangements for refreshment for all were made at the venue.



Send-off event for passing out B. Arch. Batch of 2017-18

A lively send-off party was arranged by the Fourth Year B. Arch. for bidding adieu to the Batch of 2017 on 6th of April in the college Multipurpose hall.





Send-off event for passing out
M. Arch. Batch of 2017-18



FACULTY B. ARCH.



FIRST YEAR

B. ARCH 2017-18



DIVISION-A



DIVISION-B



DIVISION-C



DIVISION-D

SECOND YEAR

B. ARCH 2017-18



DIVISION-A



DIVISION-B



DIVISION-C



DIVISION-D

THIRD YEAR

B. ARCH 2017-18



DIVISION-A



DIVISION-B



DIVISION-C



DIVISION-D

FOURTH YEAR

B. ARCH 2017-18



DIVISION-A



DIVISION-B



DIVISION-C



DIVISION-D

FINAL YEAR

B. ARCH 2017-18



DIVISION-A



DIVISION-B



DIVISION-C



DIVISION-D

Sinhgad College Of Architecture. Pune.

M. ARCH. (COMPUTER APPLICATIONS)

FIRST YEAR 2017-18



M. ARCH. (ARCHITECTURAL CONSERVATION)

FIRST YEAR 2017-18





Non-teaching Staff



Library staff

SINHGAD TECHNICAL EDUCATION SOCIETY

*“Architecture should speak of its time and place but yearn for
timelessness.”*

Frank Gehry



SINHGAD COLLEGE OF ARCHITECTURE

44/1 VADGAON (BK.)

PUNE 411041

TEL: 020-24351439

Email id: scoa@sinhgad.edu